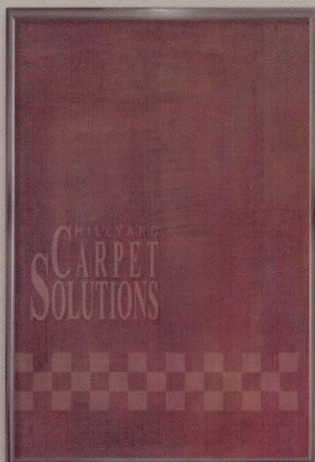


HILLYARD



Effective Carpet Care Simplified ►

Hillyard Carpet Solutions Now Formulated with Next Generation ENCAPSULATION TECHNOLOGY

- Reduces Re-soiling
- Extends Cleaning Frequency
- Extends Carpet Life
- Delivers Cleaner Carpets

Hillyard Crystalline Encapsulation

1

Specially formulated Hillyard Carpet Solutions products use high-quality surfactants that excel at separating soil and *pre-existing carpet cleaner residue* from carpet fibers.

2

The soil and residue is encapsulated within a proprietary Hillyard crystalline polymer formulation.

3

The encapsulated soil and residue crystallizes and dries, making it easy to remove with routine vacuuming.

4

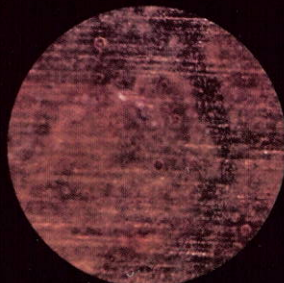
The result is cleaner carpet with less re-soiling. Less re-soiling can extend the time between cleaning procedures, improving quality and lowering the cost to clean.



The Choice is Crystal Clear

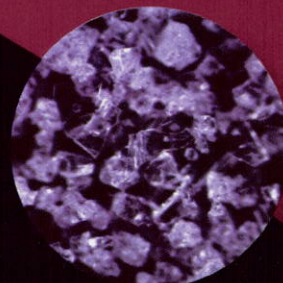
Not all carpet cleaners are formulated the same, and not all encapsulated carpet cleaners are formulated the same!

When selecting an encapsulated carpet cleaner, make sure it dries to a clear crystal. The crystal is what encapsulates the soil and residues. Well-formed crystals break away and release from the carpet fibers when vacuumed. Without superior crystallization, soils and residues cannot be vacuumed out of the carpet.



Traditional Formula

A single dimensional, detergent-based formula dried in a petrie dish and magnified 51 times under a microscope. Dries as a sticky brown residue.



Hillyard Crystalline Encapsulation

Deep Action®, reformulated as a multi-dimensional surfactant, acrylic polymer blend, magnified 51 times under a microscope. Dries as clear crystals.

Use Deep Action® for Low Moisture, Interim Carpet Cleaning Processes

1 Bonnet Cleaning Program

1. Pre-Spray With Deep Action
2. Soak Bonnet In Water and Wring Out
3. Run Floor Machine With Bonnet Attached
4. Allow Carpet to Dry to Touch
5. Vacuum



Low Moisture, Interim Cleaning

Advantages

- Fast drying, less downtime.
- Lower water consumption.
- Lower possibility of stain wick-up.
- Simple process to execute.
- Bridges the gap between restorative cleaning processes, making restorative cleaning easier.
- Enhanced appearance.

Limitations

- Provides excellent results for the time invested, but does not clean as deep as hot water extraction.

2 Cylindrical Brush Systems

1. Pre-Spray With Deep Action
2. Agitate Carpet With Brush Machine
3. Allow Carpet to Dry to Touch
4. Vacuum

Cylindrical brush systems use two counter-rotating brushes to effectively clean and agitate both sides of the carpet nap. The brushes also lift and groom the carpet pile, while the debris bin catches soil and debris.



Get Your Carpets Cleaner With New Deep Action

This entire sample test carpet was soiled with ASTM soil, and cleaned with a traditional, residue-containing carpet cleaning product.

Then, the right side was sprayed with new Deep Action. Both sides were brushed and vacuumed.

The results show new Deep Action helps restore carpets by removing soils and the residue left behind from traditional cleaning products.



Traditional Carpet
Cleaner

Hillyard
Deep Action



Restorative Extraction Processes

Pre-Spray or "In-The-Tank"

Hillyard Has It Covered

1 Pre-Spray Method

More Dwell Time, Better Results

1. Pre-treat with Carpet Pre-Spray
2. Extract with Extraction pH Rinse or Carpet pH Rinse



2 "In-The-Tank" Method

Faster Process, Good Results

- Extract with HD Extraction In The Tank



When the "In-The-Tank" method is used, extraction chemical is applied to the carpet and then it is immediately extracted out without any dwell time. The results are good. However, the pre-spray method will yield even better results.

Restorative Extraction Processes

Advantages

- Delivers deep cleaning to the base of the carpet.

Limitations

- Uses more water.
- Longer dry times, areas may be out of service longer.
- Process requires a higher level of training.

Extraction pH Rinse, Carpet pH Rinse - What's The Difference?

Both product formulas are the same. The difference is Carpet pH Rinse is designed to work in the Arsenal family of dispensing equipment. Arsenal systems provide an accurate, cost-saving and safe method for properly diluting concentrated chemicals.

Improve Pre-Spray Productivity with The Hillyard Cleaning Companion®

The Hillyard Cleaning Companion is a completely self-contained, battery-operated cleaning system. It's great for carpet pre-spraying, and has a wide array of other uses including restroom cleaning.

The Cleaning Companion automatically mixes Carpet Pre-Spray with its onboard water supply as you quickly apply the formula with a hand-held wand operating with moderate pressure. Ask your Hillyard Sales Consultant for a demonstration.



HILLYARD



Use Double Down® for Effective Spot Removal

Dual-Action Peroxide and Encapsulation Technology

1 The Power Of Hydrogen Peroxide

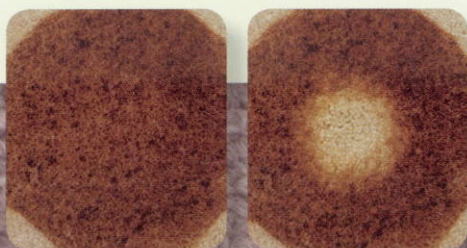
Peroxide excels at brightening and deodorizing carpets. And, it chemically reacts with soils to break them down without leaving a residue like traditional carpet surfactants.

2 The Breakthrough Technology Of Polymer Encapsulation

The polymer technology in Double Down encapsulates the remaining soils. After the polymer quickly dries to a non-tacky, crystal powder, vacuuming completely removes it from the carpet!

See The Results

The carpet on the left was saturated with grape juice and left to dry over 90 days. On the right Hillyard Double Down was applied. The result speaks for itself.



Carpets & Rug Institute Approved Hillyard Double Down AND Carpet Pre-Spray & Extraction



The CRI Seal of Approval program tests the cleaning effectiveness of spot removers, pre-spray and in-tank carpet cleaning chemicals. To earn the Seal of Approval, solutions are tested on overall cleaning effectiveness and the following criteria:

Rate of resoiling - This ensures that the product does not attract dirt to the cleaned areas faster than the rest of the carpet.

pH Level - A more neutral pH ensures that carpet dyes and fibers are not adversely affected.

Surface texture change - The product must leave the carpet pile minimally changed after repeated cleanings.

Optical brighteners - None are allowed, as they can leave some patches of carpet lighter than the rest.

Colorfastness - Products must not be so aggressive that they cause a color change in the carpet.

Green Seal™ Certified Carpet Care

Hillyard Carpet Pre-Spray & Extraction

Green Seal is an independent, non-profit organization that strives to achieve a healthier and cleaner environment.

Green Seal provides credible, objective, and unbiased information whose only purpose is to direct the purchaser to environmentally responsible products and services. Go to greenseal.org for more information.



Name	Arsenal® System				Bulk Containers		
	Dilution	Scent	Encapsulation	CRI Approved	Green Seal	1/2 -Gallon	1 -Gallon
Deep Action®+	12 Oz	Floral	Yes	No	No	n/a	n/a
Bonnet Cleaner #13+	6 Oz	Floral	No	No	No	n/a	n/a

Restorative, Extraction Carpet Cleaning

Name	Arsenal® System				Bulk Containers			
	Extraction Method	Dilution	Scent	Encapsulation	CRI Approved	Green Seal	1/2 -Gallon	1 -Gallon
HD Extraction	In-The-Tank	2 to 6 Oz	Mild	Yes	No	No	n/a	n/a
Clean Action® II+	In-The-Tank	1 Oz	Floral	No	No	No	n/a	n/a
Carpet Pre-Spray & Extraction*	Pre-Spray, Step 1	6 Oz	Mild	No	Yes	Yes	HIL0080722	HIL0080706
Extraction pH Rinse	Pre-Spray, Step 2	2 Oz	Floral	Yes	No	No	HIL0081422	HIL0081406
Carpet pH Rinse	Pre-Spray, Step 2	2 Oz	Floral	Yes	No	No	HIL0083522	HIL0083506

* Carpet Pre-Spray also available in Hillyard Cleaning Companion® Series, HIL0070022, 6 - 1/2 Gallons/Case

Double Down, Dual-Action Carpet Spotting, Formulated with Peroxide and Encapsulation Technology

Name	Description	Scent	Encapsulation	CRI Approved	Green Seal	Pack		Item No.
						6 - 32 oz Bottles	6 - 22 oz. Bottles, 1 Trigger Head	
Double Down®	Dual chamber, squeeze bottle. Each bottle is ready to use, no trigger sprayer required.	Mild	Yes	Yes	No	6 - 22 oz. Bottles, 1 Trigger Head	8 - 22 oz. Bottles	HIL0093204
Double Down Starter Kit	Dual chamber, trigger sprayer bottle. Kit comes with 1 trigger and 6 dual chamber refills.							HIL0104069
Double Down Refills	Dual chamber, trigger sprayer bottle refills to be used with Double Down trigger head							HIL0104070
Double Down Trigger	Special dual chamber bottle trigger head to be used with Double Down refills only.							HIL26016

Traditional Carpet Spotters

Name	Description	Arsenal® System				Bulk Containers		
		Dilution	Scent	1/2 -Gallon	1 -Gallon	1-Quart	1-Gallon	Kit
Carpet Spotter+	Ready to use in bulk containers, Diluted at 6 Oz. per gallon of water in Arsenal System	See Desc.	Mild	HIL0081522	HIL0081506	HIL0091004	HIL0091006	n/a
Carpet Spotter Gel+	Highly concentrated gel clings to carpet fiber to dissolve oil and water-based soils quickly	Ready To Use	Mild	n/a	n/a	HIL0090904	n/a	n/a
Rust Spotter Gel+	Highly concentrated gel clings to carpet fiber to dissolve and loosen rust spots	Ready To Use	Lime	n/a	n/a	HIL0091104	n/a	n/a
Debrowner II	Removes coffee, tea, urine and yellow oxidized stains from light colored carpet	Ready To Use	Mild	n/a	n/a	HIL0090704	n/a	n/a
Liquid Gum-Go®	Formulated for the safe and effective removal of gum from carpeting, upholstery and hard surfaces	Ready To Use	Citrus	n/a	n/a	HIL0091204	n/a	n/a
Carpet Spotting Kit	Contains 1 quart of each of our traditional spotters and Take Down®, maid caddy, 3 trigger sprayers, a tamping brush, bone scraper, toweling, and spotting chart.	Ready To Use	n/a	n/a	n/a	n/a	n/a	HIL0090002

Specialty Products

Name	Description	Dilution	Scent	Bulk Containers		
				1-Quart	1 -Gallon	Powder
Carpet Sanitizer	EPA registered cleaner, sanitizer, and deodorizer for synthetic carpet	2 to 16 Oz	Mild	n/a	HIL0090406	n/a
Clean Release®+	Concentrated shampoo designed for dry foam carpet cleaning machines	2 to 8 Oz	Pine	n/a	HIL0090506	n/a
Carpet Anti-Stat	Stops annoying static shock in carpets and eliminates the buildup of static electricity, 1gal/400 sq. ft.	Ready To Use	Citrus	n/a	HIL0090606	n/a
Soil-Stop®+	Concentrated soil and stain retardant protects carpet from dry, water-based, and oil-based stains	1 to 6 Oz	Mild	n/a	HIL0090806	n/a
Carpet Booster®	Fast working, non-chlorine, oxygen-based, granular cleaner that brightens colors, removes yellowing	1 to 4 Oz	Clean	n/a	n/a	HIL0091500
Defoamer II	Concentrated, stable emulsion designed to eliminate foam in recovery tanks	1 to 6 Oz	Mild	n/a	HIL0018306	n/a
Take Down®	Natural odor destroyer attacks organic matter (urine)	1 to 16 Oz	Cherry	HIL0046604	HIL0046606	n/a
			Green Apple	HIL0046704	HIL0046706	n/a
			Fresh	HIL0046804	HIL0046806	n/a

Case Pack: 12 - 1 Quart 4 - 1 Gallon 6 - 2 lb.