



the andersen company

ONE SOURCE FOR MATS

ANTI-FATIGUE MATS

SLIP RESISTANT MATS

ERGONOMIC MODULAR TILE MATS

LOGO MATS

MESSAGE MATS

ENTRANCE MATS AND TILES

INTERIOR MATS

**INDUSTRIAL MATTING
CATALOG**

Andersen. Uncompromisingly Good!

In the mat industry, Andersen mats are where design and function come together, where quality isn't compromised to meet a price point, and where solutions to your maintenance and décor problems come first. We promise our customers an unconditional, 100% satisfaction guarantee for as long as you own our product.

The Andersen Company is committed to reducing our environmental impact. We are continually improving our environmental performance as an integral and fundamental part of our business strategy and operating methods. We have reduced waste going to landfills by 80% and recycle most paper, metal, cardboard, plastic, carpet and rubber waste we generate. Our commitment is also evident in our development of over 50 mat styles that contain recycled raw materials including the WaterHog Eco line of mats that contain 100% post-consumer recycled PET fiber reclaimed from plastic bottles.

For over three decades The Andersen Company has been America's leader in innovative floor protection systems, industrial safety, anti-fatigue products and high performance entrance matting. So if you are looking for better ways to minimize maintenance, prolong floor surface life, reduce cleaning costs, improve safety or increase worker comfort ask for Andersen mats—your environmentally friendly choice.



TABLE OF CONTENTS

PAGE 6

ANTI-FATIGUE &
SLIP RESISTANT
MAT COLLECTION

PAGE 24

ERGONOMIC
MODULAR TILE
MAT COLLECTION

PAGE 32

LOGO MAT, SIGN
MAT & MESSAGE
MAT COLLECTION

PAGE 46

ENTRANCE MAT
AND TILE
COLLECTION

PAGE 62

INTERIOR MAT
COLLECTION

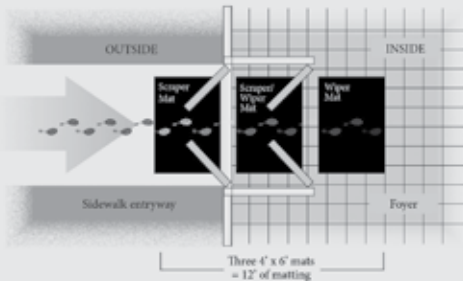
PRODUCT NAME	PRODUCT #	MAT TYPE	PLACEMENT	PAGE #
PREVENTATIVE MAINTENANCE and MAT PLACEMENT.....				2
MODULAR SYSTEMS ordering and installation.....				3
ANDERSEN PRODUCT FEATURE GUIDE and Chemical Compatibility of Nitrile Rubber Products.....				4, 5
HOG HEAVEN™	421, 422, 423, 424	Anti-fatigue	Wet/Dry	8
HOG HEAVEN™ CONFETTI.....	443, 444.....	Anti-fatigue.....	Wet/Dry.....	9
HOG HEAVEN™ MARBLE TOP.....	448, 449.....	Anti-fatigue.....	Dry.....	10
HOG HEAVEN™ FASHION.....	441, 442.....	Anti-fatigue.....	Dry.....	11
COMFORT FLOW/COMFORT FLOWGRIT and COMFORT SCRAPE/ COMFORT SCRAPE GRIT.....	420, 430, 4200, 4300.....	Anti-fatigue/Slip resistant.....	Wet/Dry.....	12
CUSHION STATION™ without holes and CUSHION STATION™ with holes.....	370, 371.....	Anti-fatigue/FlowThrough.....	Wet/Dry.....	13
CUSHION MAX™ with holes and CUSHION MAX™ without holes.....	413, 414.....	Anti-fatigue.....	Wet/Dry.....	14
COMPLETE COMFORT™ without holes and COMPLETE COMFORT™ with holes.....	494, 496.....	Anti-fatigue/FlowThrough.....	Wet/Dry.....	15
COMPLETE COMFORT™ II.....	594.....	Anti-fatigue.....	Wet/Dry.....	15
HAPPY FEET™ textured surface & grip surface.....	465, 466, 475, 476.....	Anti-fatigue.....	Wet/Dry.....	16
HAPPY FEET™ LINKABLE textured surface & grip surface.....	467, 468, 469, 470, 477, 478, 479, 480.....	Anti-fatigue.....	Wet/Dry.....	16
COMFORT MATE.....	301, 302, 303, 304.....	Anti-fatigue/FlowThrough.....	Wet/Dry.....	17
KNEELING COMFORT™.....	433.....	Anti-fatigue.....	Wet/Dry.....	18
SURE CUSHION™ RIBBED, TEXTURE, HEAVY DUTY, YELLOW BORDER.....	415, 425, 428, 427.....	Anti-fatigue.....	Dry.....	19
SURE TREAD™ V-GROOVE.....	505.....	Floor Protection.....	Dry.....	19
TRACTION TREAD.....	50.....	Slip resistant.....	Wet/Dry.....	20
TRACTION TREAD SOFT.....	56.....	Anti-fatigue/Slip resistant.....	Wet/Dry.....	20
TRACTION HOG II™ without holes and TRACTION HOG II™ with holes.....	4418, 4419.....	Slip resistant.....	Wet.....	21
CORRUGATED SWITCHBOARD and DIAMOND SWITCHBOARD.....	781, 783.....	Floor Protection.....	Dry.....	22
MILITARY SWITCHBOARD DIAMOND and MILITARY SWITCHBOARD SMOOTH.....	784, 782.....	Floor Protection.....	Dry.....	23
HOG HEAVEN™ II MODULAR TILE & LINKABLE MATS COMFORT	522, 523, 4210, 4211	Anti-fatigue	Dry	26
HOG HEAVEN™ II MODULAR TILE & LINKABLE MATS COMFORT with grit.....	524, 525, 4212, 4213.....	Anti-fatigue.....	Dry.....	26
HOG HEAVEN™ II WORKSTATION MATS COMFORT.....	4216, 4217, 4218, 4219.....	Anti-fatigue.....	Dry.....	26
HOG HEAVEN™ II MODULAR TILE TRAFFIC.....	516, 517, 518, 519.....	Anti-fatigue.....	Wet/Dry.....	27
HOG HEAVEN™ II MODULAR TILE & LINKABLE MATS FASHION.....	533, 534, 4410.....	Anti-fatigue.....	Dry.....	28
HOG HEAVEN™ II WORKSTATION MATS FASHION.....	4409.....	Anti-fatigue.....	Dry.....	28
HOG HEAVEN™ II MODULAR TILE MARBLE.....	552, 553.....	Anti-fatigue.....	Dry.....	29
COMFORT FLOW/SCRAPE HD MODULAR TILE & LINKABLE MATS.....	4430, 4431, 4434, 4435.....	Anti-fatigue/Slip resistant.....	Wet/Dry.....	30
COMFORT FLOW/SCRAPE HD MODULAR TILE & LINKABLE MATS with grit.....	4432, 4433, 4436, 4437.....	Anti-fatigue/Slip resistant.....	Wet/Dry.....	30
COMFORT FLOW/SCRAPE HD WORKSTATION MATS.....	4439, 4440.....	Anti-fatigue/Slip resistant.....	Wet/Dry.....	30
COMFORT FLOW/SCRAPE HD WORKSTATION MATS with grit.....	4445, 4446.....	Anti-fatigue/Slip resistant.....	Wet/Dry.....	30
CUSHION STATION™ HD MODULAR TILE & LINKABLE MATS with and without holes.....	375, 376, 3370, 3371.....	Anti-fatigue/FlowThrough.....	Wet/Dry.....	31
CUSHION STATION™ HD WORKSTATION MATS with and without holes.....	3372, 3373.....	Anti-fatigue/FlowThrough.....	Wet/Dry.....	31
WATERHOG™ LOGO INLAY	234, 235	Scrapper/Wiper	Indoor/Outdoor	34
WATERHOG™ ECO ELITE ROLL GOODS LOGO.....	2268.....	Scrapper/Wiper.....	Indoor/Outdoor.....	35
BERBER ROLL GOODS LOGO.....	2283.....	Scrapper/Wiper.....	Indoor.....	36
CLASSIC IMPRESSIONS HD CUSTOM SHAPE.....	733.....	Wiper.....	Indoor.....	37
CLASSIC IMPRESSIONS HD LOGO and GRAND IMPRESSIONS HD LOGO.....	73, 64.....	Wiper.....	Indoor.....	38
CLASSIC IMPRESSIONS™.....	70.....	Wiper.....	Indoor.....	39
SUPERSCRAPES™ IMPRESSIONS LOGO.....	3559.....	Scrapper.....	Indoor/Outdoor.....	40
SUPERSCRAPES™ SIGNATURE LOGO.....	3669.....	Scrapper.....	Indoor/Outdoor.....	41
WATERHOG™ SIGNATURE.....	3667, 3668.....	Scrapper/Wiper.....	Indoor/Outdoor.....	42
WATERHOG™ SIGN.....	206, 281.....	Scrapper/Wiper.....	Indoor/Outdoor.....	43
HOG HEAVEN™ SIGN.....	511, 512, 513, 514.....	Anti-fatigue.....	Indoor.....	44
WILDLIFE.....	812.....	Wiper.....	Indoor.....	45
ORIENTAL.....	814.....	Wiper.....	Indoor.....	45
WATERHOG™ ECO GRAND ELITE	2243, 2244	Scrapper/Wiper	Indoor/Outdoor	48
WATERHOG™ ECO GRAND PREMIER.....	2246, 22248, 2249.....	Scrapper/Wiper.....	Indoor/Outdoor.....	49
WATERHOG™ GRAND CLASSIC.....	272, 273, 274.....	Scrapper/Wiper.....	Indoor/Outdoor.....	50
WATERHOG™ ECO ELITE and ECO ELITE FASHION.....	2240, 2241.....	Scrapper/Wiper.....	Indoor/Outdoor.....	51
WATERHOG™ ECO PREMIER and ECO PREMIER FASHION.....	2295, 2297.....	Scrapper/Wiper.....	Indoor/Outdoor.....	52
WATERHOG™ CLASSIC, FASHION and DRAINABLE.....	200, 280, 250.....	Scrapper/Wiper.....	Indoor/Outdoor.....	53
WATERHOG™ CLASSIC DIAMOND and FASHION DIAMOND.....	208, 221.....	Scrapper/Wiper.....	Indoor/Outdoor.....	54
WATERHOG™ ECO ELITE ROLL GOODS.....	2271, 2272.....	Scrapper/Wiper.....	Indoor/Outdoor.....	55
WATERHOG™ CLASSIC TILE.....	210, 216, 219, 220.....	Scrapper/Wiper.....	Indoor.....	56
SUPERSCRAPES™ PARQUET TILE.....	5557.....	Scrapper.....	Indoor/Outdoor.....	56
SUPERSCRAPES™ ECO.....	554.....	Scrapper.....	Indoor/Outdoor.....	57
SUPERSCRAPES™.....	555, 5555.....	Scrapper.....	Indoor/Outdoor.....	57
ECO SELECT.....	20296.....	Scrapper/Wiper.....	Indoor/Outdoor.....	58
WATERHOG™ DIAMONDCORD.....	296.....	Scrapper/Wiper.....	Indoor.....	59
WATERHOG™ MASTERPIECE SELECT.....	265.....	Scrapper/Wiper.....	Indoor.....	59
BRUSH HOG and BRUSH HOG PLUS.....	395, 385.....	Scrapper.....	Outdoor.....	60
FLEX-TIP™.....	874.....	Scrapper.....	Outdoor.....	61
FRONTIER.....	437.....	Scrapper.....	Indoor/Outdoor.....	61
ENVIRO PLUS™	2202	Wiper	Indoor	64
TRI-GRIP™ and TRI-GRIP™XL.....	100, 190, 2100.....	Wiper.....	Indoor.....	65
COLORSTAR™ CRUNCH and COLORSTAR™ CRUNCH XL.....	110, 2110.....	Wiper.....	Indoor.....	66
COLORSTAR™ PLUSH.....	180.....	Wiper.....	Indoor.....	67
STYLIST.....	872.....	Wiper.....	Indoor.....	68
IMPRESSIONIST.....	871.....	Wiper.....	Indoor.....	68
VICTORY.....	873.....	Wiper.....	Indoor.....	69
COBBLESTONE.....	870.....	Wiper.....	Indoor.....	69
CLEAN STRIDE.....	410, 411, 412.....	Scrapper/Wiper.....	Indoor.....	70
GREASE HOG™.....	883.....	Scrapper/Wiper.....	Indoor.....	70

Preventative Maintenance

Mats are the first defense to stop dirt and moisture from entering your building. Mats filter these contaminants from entering the facility, saving thousands of dollars a year in cleaning costs. Mats also protect interior floor surfaces from excessive damage and wear. Entrance mats are the most effective way of stopping dirt and moisture at the door and keeping building maintenance costs to a minimum.

Consider These Facts...

- 70% to 80% of dust, grime and dirt in a building is tracked in from the outside on people's feet—permanently damaging floors
- One square yard of carpet can accumulate one pound of dirt a week—twice that in inclement weather
- It is estimated that the cost to find and remove a single pound of dirt from a building can run in excess of \$600 in cleaning costs. As few as 150 people entering a facility can track in one pound of dirt in a 5 day work week costing over \$30,000 dollars annually to remove.
- By utilizing high performance entrance matting of at least 10' to 15' (as recommend by the U.S. Green Building Council and the Carpet and Rug Institute) you can capture as much as 85% to 95% of contaminants that enter the building, saving maintenance dollars and protecting building assets



Safety and Ergonomics

Mats are used throughout facilities in numerous other capacities where safety is a must and anti-fatigue comfort is essential to the health and well being of employees.

- Slip and falls are the second leading cause of all workplace injuries according to Liberty Mutual Workplace Index. As many as 25,000 people a day are victims of slip and fall accidents(NSC)
 - Compensation and medical costs associated with employee slip and fall accidents total approximately \$70 Billion annually(NSC)
 - The average cost of a slip and fall injury exceeds \$12,000(Wausau Insurance)
 - The average cost to defend a slip and fall lawsuit is \$50,000(NFSI)
 - Back injuries account for 25% of all worker compensation claims annually
 - Cumulative Standing Trauma(CST) causes Billions of dollars of loss annually due to reduced productivity, increased worker compensation, higher insurance rates and absenteeism
 - According to the American College of Occupational and Environmental Science, about 38% of workers in the United States suffer from fatigue.
- Testing shows that Ergonomic Matting can reduce worker fatigue.**

Andersen has the right mat for every job.

Scraper Entrance Mats

Your First Line of Defense

Scraper mats are designed to stop mud and larger particles of dirt from being tracked inside buildings. These mats provide aggressive scraping action and trap dirt and debris in recessed areas until the mats are cleaned. Scraper mats can be used outside or inside and should be used in conjunction with a Scraper/Wiper mat and a Wiper mat.



Scraper/Wiper Entrance Mats

The Second Step to Keeping Dirt Outside

Scraper/Wiper mats are designed to provide scraping action and wiping to further stop dirt and moisture from entering a facility. These mats are typically made of tough fabrics. They channel and retain dust in recessed grooves while absorbing moisture in the fabric face. These mats are primarily used inside but may be used outside as well.



Wiper Entrance Mats

The Third Weapon Against Dirt and Moisture

Wiper Entrance Mats are designed to stop any remaining dust and moisture left after using the Scraper mat and Scraper/Wiper mat. These mats are made with carpet facing to complement most interiors. These mats are for indoor use and when used in conjunction with a Scraper mat and Scraper/Wiper mat, they can stop as much as 85% to 95% of dirt and grime from being tracked into a building.



Logo Mats

Promote a Positive Image

Custom designed logo mats are a unique way to promote a company's image. Logos or other designs can be replicated on the face of numerous styles of mats without any setup charge. Logo mats add a professional look to any entrance, while acting as a further barrier to keep contaminants from entering a facility.



Anti-Fatigue Mats

Provide Comfort and Increase Productivity

Anti-Fatigue mats are available in a wide range of sizes, weights and materials. It has been proven that the proper use of anti-fatigue mats can enhance worker productivity by over 20%. These mats are designed for use wherever workers spend time standing and will help to eliminate muscular skeletal disorders.



Slip Resistant and Safety Mats

Protect against Slips and Falls

Slip resistant and safety mats help provide safe working areas for employees and visitors to facilities. 85% of worker's compensation claims are attributed to employees slipping on slick floors. The utilization of slip resistant mats is an ideal solution to prevent such accidents from occurring.



Flow Through Mats

Wet Area Solution

Flow through mats allow liquids to pass through them to eliminate slip hazards. Anti-fatigue properties provide comfort when standing for long periods of time. The thick rubber helps alleviate stress on the legs, feet and lower back.



Modular Systems ordering and installation

The online **Modular Mat Calculator** located from the QR code below can help you calculate how much of each style of tile (corner, sides and middles) you need when working with squares & rectangles. Middle Modular Tiles measure 18" x 18" or 36" x 36" without the edging. Working in 18" or 36" increments will keep custom cutting to a minimum.

CAD modular proof drawings are available for complex jobs that are not rectangles or squares. To get a CAD modular proof drawing contact customer service or your Andersen sales representative. You will need to provide the following information to have a CAD drawing created:

1. Rough Sketch (*include a rough sketch*)
2. Your Company Name (*example: ABC Company*)
3. Drawing Area Name (*example: Machine 82*)
4. Product Name or Number (*example: Hog Heaven II Modular Tile Comfort*)
5. Desired size of tiles (*example: 18" x 18" or 36" x 36"*)
6. Does the installation have to be exact or can it be oversized or undersized? (*example: The installation can be oversized up to 10 inches*)
7. Edging Required (*identify where beveled edging applies*)
8. Color of Edging (*Black or Black/Yellow*)
9. A dimension for every side (*L-shape has 6 dimensions, T-Shape has 8*)
10. Special Instructions (*include any special instructions on the rough sketch*)

When a proof drawing is completed by the CAD department it will be emailed to the customer. The proof will permanently reside in the customer's "my account" on the website and can be accessed at any time with the customer's username and password.

These tools can be located at www.andersenco.com

Under the "Tools and Resources" tab...



Modular Mat Calculator

Under the "Training and Education/Videos/How to" tab...



Measuring for Modular Tiles



Cutting and Installing Modular Tiles


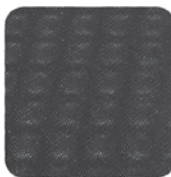








Andersen Product Feature Guide

Item	Category	Product Number(s)	Welding Safe	Static Dissipative	Anti-Static	Oil/Grease Resistant	Oil/Grease Proof	Abrasive Resistant	Antimicrobial Treated	Electrically conductive	Non-conductive	Chemical Resistant	Wet Areas	Dry Areas
Anti-Fatigue														
Comfort Flow, Comfort Scrape		420, 430	X	X			X	X	X			X	X	X
Comfort Flow Grit, Comfort Scrape Grit		4200, 4300	X	X			X	X	X			X	X	X
Comfort Flow HD Modular Tile, Linkable and Workstation Mats		4430, 4434, 4439	X	X			X	X	X			X	X	X
Comfort Flow HD Modular Tile, Linkable and Workstation Mats w/grit		4432, 4436, 4445	X	X			X	X	X			X	X	X
Comfort Scrape HD Modular Tile, Linkable and Workstation Mats		4431, 4435, 4440	X	X			X	X	X			X	X	X
Comfort Scrape HD Modular Tile, Linkable and Workstation Mats w/grit		4433, 4437, 4446	X	X			X	X	X			X	X	X
Comfort Mate Black		301,303				X						X	X	X
Comfort Mate Red		302, 304					X					X	X	X
Complete Comfort		494, 496			X		X		X			X	X	X
Complete Comfort II		594	X	X			X	X				X	X	X
Cushion Max		413, 414					X		X			X	X	X
Cushion Station		370, 371	X	X			X	X				X	X	X
Cushion Station Modular Tile and Linkable Mats		375, 376, 3370, 3371	X	X			X	X	X			X	X	X
Happy Feet		465, 466, 475, 476	X				X	X		X		X	X	X
Hog Heaven		421, 422, 423, 424	X				X	X		X		X		X
Hog Heaven Confetti		443, 444	X	X				X						X
Hog Heaven Fashion		441, 442			X									X
Hog Heaven Marble Top		448, 449			X									X
Hog Heaven II Modular Tile Comfort and Linkable Comfort		522, 523, 4210, 4211	X				X	X		X		X		X
Hog Heaven II Modular Tile Comfort and Linkable Comfort w/grit		524, 525, 4212, 4213	X				X	X		X		X		X
Hog Heaven II Workstation Comfort and Workstation Comfort w/grit		4216, 4217, 4218, 4219	X				X	X		X		X		X
Hog Heaven II Modular Tile Fashion/Linkable Mats Fashion		533, 534, 4410			X									X
Hog Heaven II Modular Tile Marble		552, 553			X									X
Hog Heaven II Modular Tile Traffic		516, 517	X				X	X		X		X		X
Hog Heaven II Modular Tile Traffic Drainable		518, 519	X				X	X		X		X		X
Kneeling Comfort		433, 436	X				X	X		X		X	X	X
Sure Cushion Products		415, 425, 427, 428												X
Sure Tread		505				X								X
Traction Tread Soft		56	X	X			X	X	X			X	X	X
Slip Resistant Matting														
Super Scrape		555, 5555					X					X	X	X
Super Scrape General Duty		550											X	X
Traction Hog II		4418, 4419	X	X			X					X	X	X
Traction Tread		50	X				X	X		X		X	X	X
Non Conductive Matting														
Switchboard Matting		781, 782, 783, 784				X				X				X
Logo Mats														
Classic Impressions, Classic Impressions HD		70/73		X										X
Classic Impressions HD Custom Shapes		733		X										X
Superscrape Impressions		3559			X	X						X	X	X
SuperScrape Impressions Message Mats		3557			X	X						X	X	X
Waterhog Inlay		234, 235			X								X	X
Entrance Way Mats														
Brush Hog Plus – Scraper		385			X								X	X
Frontier – Scraper		437											X	X
Flex-Tip – Scraper		874											X	X
Super Scrape Eco – Scraper		554			X								X	X
Waterhog Classic – Scraper/Wiper		200			X								X	X
Waterhog Classic Diamond – Scraper/Wiper		208			X								X	X
Waterhog Eco Elite – Scraper/Wiper		2240			X								X	X
Waterhog Eco Elite Fashion – Scraper/Wiper		2241			X								X	X
Waterhog Eco Grand Elite – Scraper/Wiper		2243, 2244, 2246			X								X	X
Waterhog Fashion – Scraper/Wiper		280			X								X	X
Waterhog Fashion Diamond – Scraper/Wiper		221			X								X	X
Waterhog Masterpiece Select – Scraper/Wiper		265			X								X	X

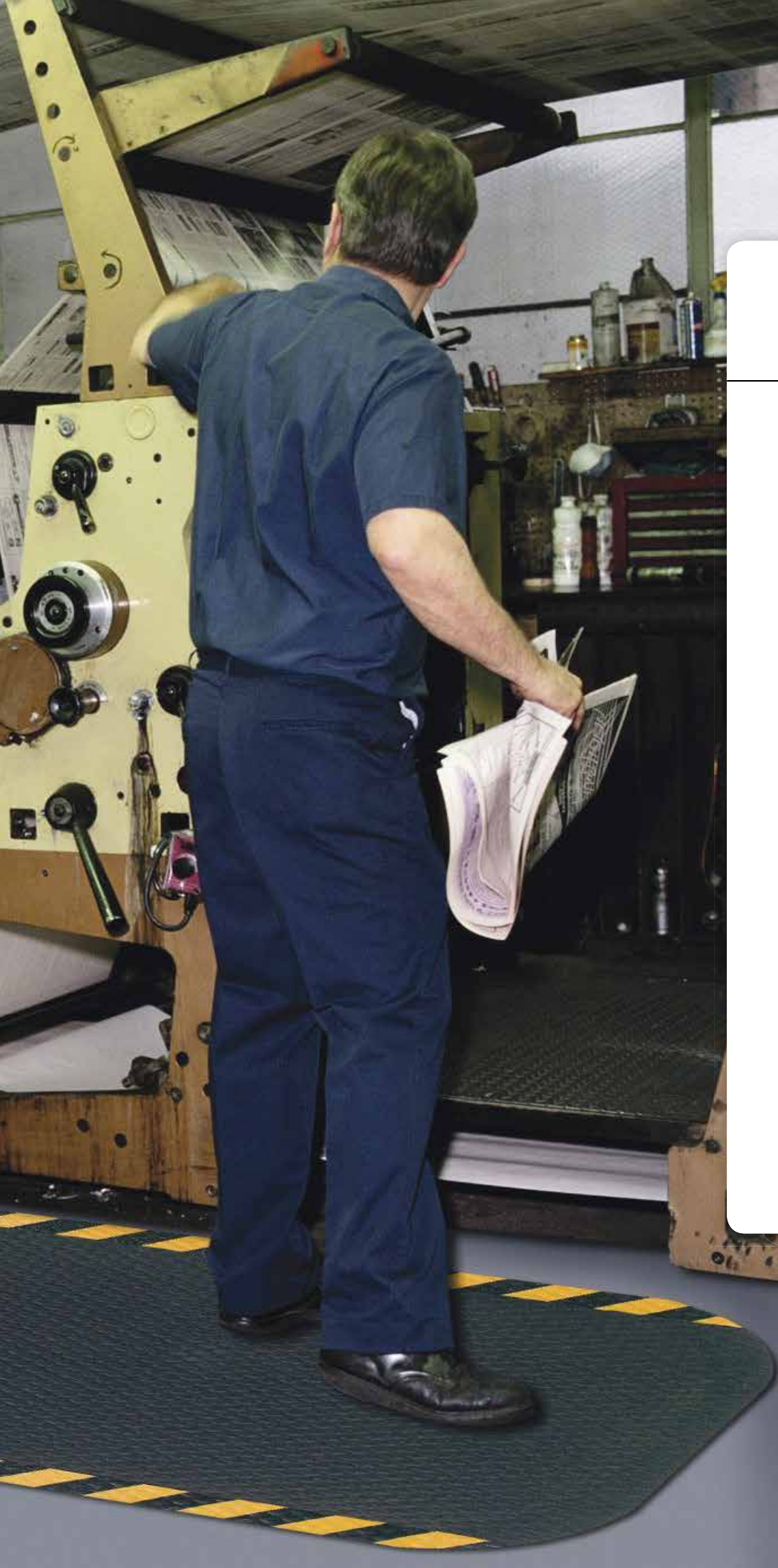
Andersen Product Feature Guide (continued)

Item	Category	Product Number(s)	Welding Safe	Static Dissipative	Anti-Static	Dil/Grease Resistant	Dil/Grease Proof	Abrasive Resistant	Antimicrobial Treated	Electrically conductive	Non-conductive	Chemical Resistant	Wet Areas	Dry Areas
Entrance Way Mats (continued)														
Eco Select – Scraper/Wiper		20296			X							X	X	
Cobblestone – Wiper		870											X	
Colorstar Solution Dyed – Wiper		120, 130		X	X								X	
Enviro Plus – Wiper		2202			X								X	
Impressionist – Wiper		871											X	
Stylist – Wiper		872											X	
Trigrip – Wiper		100, 190			X								X	
Victory – Wiper		873			X								X	
Specialty Mats														
Clean Stride - Scraper/Wiper		410, 411, 412			X								X	

Chemical Compatibility of Nitrile Rubber Products

Chemical Tested		Rating		
A	Aliphatic Hydrocarbons - Kerosene, Etc.	1	Applies to these products:	
B	Animal & Vegetable Oils	1		
C	Aromatic Hyrdocarbons - Benzol, Toluol, Etc.	1		
D	Bleach	1		
E	Concentrated Alkali	1		
F	Cutting Oil	1		
G	Denatured Alcohol	1		
H	Diesel	1		
I	Dilute Alkali	1		
J	Engine Oil	1		
K	Gasoline	1		
L	Hydraulic Fluid Silicate Ester	1		
M	Hydraulic Fluid Water Glycol	1		
N	L.P. Gas, Fuel Oils	1		
O	Lubricating Oils - High Aniline	1		
P	Lubricating Oils - Low Aniline Point	1		
Q	Mineral Spirits	1		
R	Muriatic Acid - 30%, 20 Degrees Baume	1		
S	Phosphoric Acid	1		
T	Pine Cleaner	1		
U	Refrigerants, Ammonia	1		
V	Sodium Hydroxide, Rayon Grade, 25%	1		
W	Sulphuric Acid - 30%	1	<div>1 = Little or no effect 2 = Minor to moderate effect 3 = Moderate to severe effect 4 = Not recommended</div>	
X	Transmission Fluid	1		
Y	WD40	1		
Z	Water	1		
AA	Window Cleaner	1		
BB	Anti-Freeze	2		
CC	Brake Fluid	2		
DD	Calcium Hypochlorite - 12%	2		
EE	Chlorine Bleach - 12.5%	2		
FF	Hydraulic Fluid - Petroleum Base	2		
GG	Steam	2		
HH	Butyl Alcohol	3		
II	Isopropyl Alcohol - 99%	3		
JJ	Acetic Acid - 56%	4		
KK	Acetone	4		
LL	Cyclohexande	4		
MM	Refrigerants, Methyl Chloride	4		





ANTI-FATIGUE MAT & SLIP RESISTANT MAT COLLECTION

HOG HEAVEN™
HOG HEAVEN™ CONFETTI
HOG HEAVEN™ MARBLE TOP
HOG HEAVEN™ FASHION
COMFORT FLOW™
COMFORT FLOW™ GRIT
COMFORT SCRAPE™
COMFORT SCRAPE™ GRIT
CUSHION STATION™
CUSHION MAX™
COMPLETE COMFORT™
COMPLETE COMFORT™ II
HAPPY FEET™
COMFORT MATE
KNEELING COMFORT™
SURE CUSHION™ RIBBED
SURE CUSHION™ TEXTURE
SURE CUSHION™ HEAVY DUTY
SURE CUSHION™ YELLOW BORDER
SURE TREAD™ V-GROOVE
TRACTION TREAD
TRACTION TREAD SOFT
TRACTION HOG II™
CORRUGATED SWITCHBOARD
DIAMOND SWITCHBOARD
MILITARY SWITCHBOARD
MILITARY SWITCHBOARD SMOOTH



caution yellow



HOG HEAVEN™

ANTI-FATIGUE/DRY OR WET ENVIRONMENTS/INDOOR



100% solid Nitrile rubber
closed cell Nitrile cushion



5/8" black border
5/8" striped border
7/8" black border
7/8" striped border

Product No. 421
Product No. 423
Product No. 422
Product No. 424

- Nitrile rubber top surface has 20% recycled content
- Closed cell Nitrile rubber cushion is permanently molded (not glued) to the Nitrile rubber top surface
- Rubber borders will not crack or curl
- Chemical Resistant, Grease & Oil Proof
- Electrically conductive and certified slip resistant by the National Floor Safety Institute
- Welding Safe
- 5/8" or 7/8" thicknesses
- Borders are beveled and are available with OSHA approved colors: yellow, orange, green or red
- Recommended for distribution, manufacturing and retail facilities for picking lines, assembly lines, work stations, check-out stations and more

SIZES

2' x 3'
3' x 5'
3' x 12'
4' x 6'
4.8' x 8'
Additional lengths up to 60'.
See price list for all additional sizes.

Sizes are approximate.



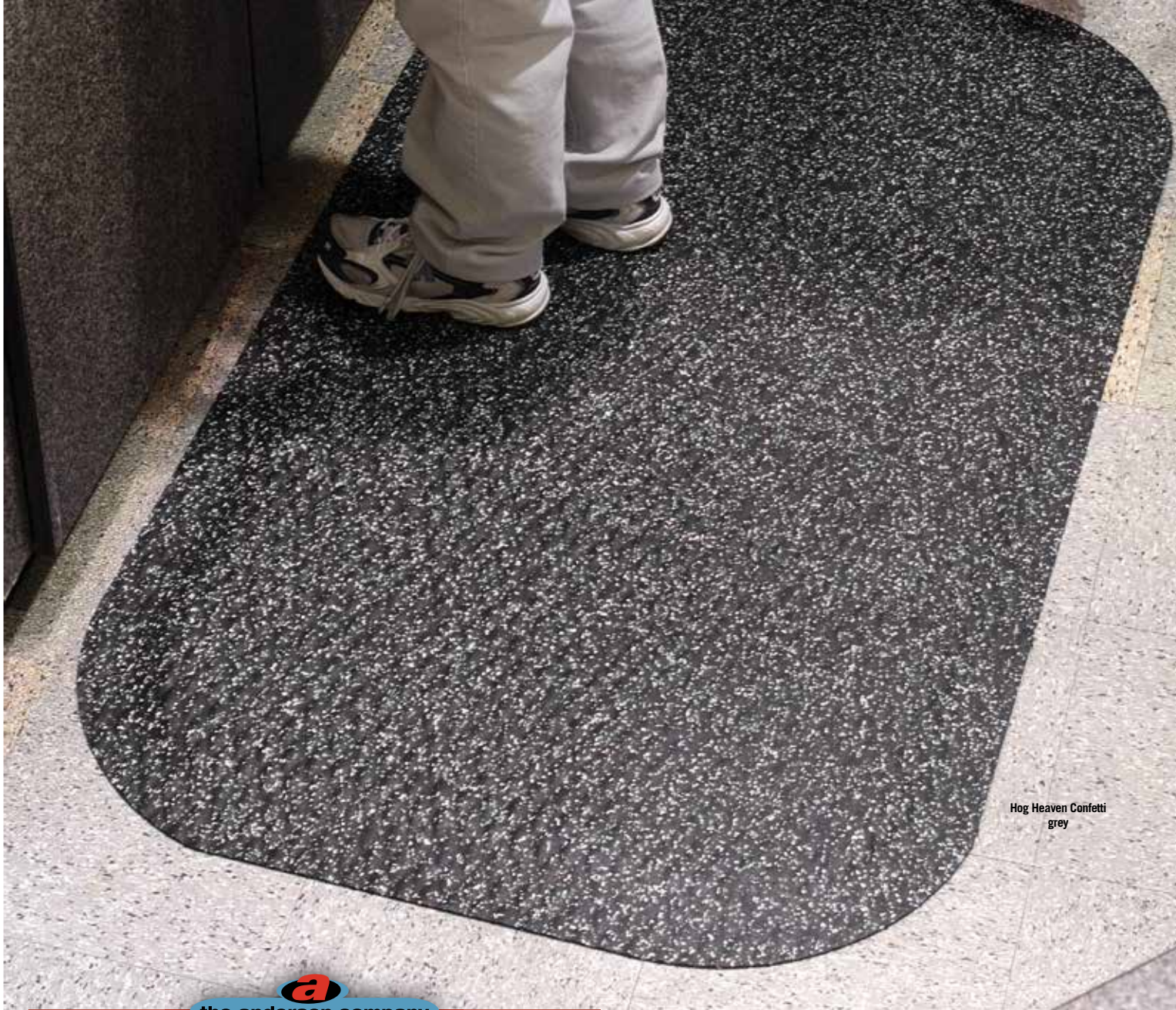
01 danger red

02 caution yellow

03 warning orange

04 safety green

black



Hog Heaven Confetti
grey



the andersen company

HOG HEAVEN™ CONFETTI

5/8"
7/8"

Product No. 443
Product No. 444

- Earth-friendly 95% recycled post-consumer rubber car tire top surface
- Closed-cell Nitrile rubber cushion backing provides long-lasting comfort without breaking down
- Beveled edges and curved corners create a safer transition from mat to floor
- Welding safe
- Available in two thicknesses: 5/8" and 7/8"
- Static dissipative construction makes these mats ideal for industrial, commercial, retail, hospitality, and health care applications

SIZES

2' x 3'
3' x 5'
3' x 12'
Additional lengths up to 60'.
See price list for all additional sizes.

Sizes are approximate.



ANTI-FATIGUE/INDOOR

5/8"

7/8"



95% post consumer rubber from tires

closed cell Nitrile cushion

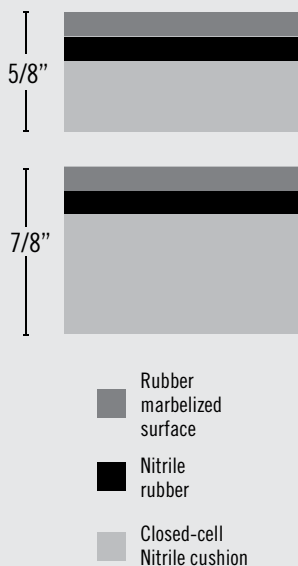


Hog Heaven Marble Top
midnight swirl

ANTI-FATIGUE/INDOOR



midnight swirl



**HOG HEAVEN™
MARBLE TOP**

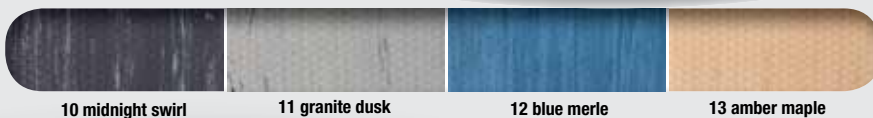
5/8" Product No. 448
7/8" Product No. 449

- Closed cell Nitrile rubber cushion provides long lasting comfort
- Extra thick (.170") PVC/rubber top ensures long life
- Borders will not crack or curl
- Smooth diamond patterned top allows workers to pivot freely
- Surface is easy to clean
- Cushion is not glued on but is permanently molded to rubber top eliminating the possibility of delamination
- Available in 5/8" and 7/8" thicknesses
- Anti-static

SIZES

2' x 3'
3' x 5'
3' x 12'
4' x 6'
Additional lengths up to 60'.
See price list for all additional sizes.

Sizes are approximate.





Hog Heaven Fashion
cobalt blue



HOG HEAVEN™ FASHION

5/8"
7/8"

Product No. 441
Product No. 442

- Anti-static, slip-resistant 100% solution-dyed polypropylene top surface will not fade
- Solution-dyed fabric is molded to a solid Nitrile rubber surface for best durability
- Closed-cell Nitrile rubber cushion backing is molded to the Nitrile surface, providing a comfortable long-lasting mat
- Beveled border remains flexible for the life of the product and will not crack or curl
- All Hog Heaven™ mats are certified slip resistant by the National Floor Safety Institute
- Available in two thicknesses: 5/8" and 7/8"
- Ideal uses include concierge desk, bellman stand, copier station, registration desk and shipping desk

SIZES

2' x 3'
3' x 5'
3' x 12'
Additional
lengths up
to 60'.
See price
list for all
additional
sizes.

Sizes are
approximate.

ANTI-FATIGUE/INDOOR



cobalt blue



320 granite

321 cocoa brown

322 cobalt blue

323 coal black



MADE
IN THE
USA



Comfort Flow



COMFORT FLOW & COMFORT SCAPE

Comfort Flow
Comfort Scape

Product No. 420
Product No. 430

**ANTI-FATIGUE/SLIP RESISTANT/DRY OR WET ENVIRONMENTS
INDOOR-OUTDOOR**



Comfort Flow



Comfort Scape

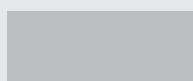


Comfort Flow grit



Comfort Scape grit

3/8"



Dense closed-cell
Nitrile cushion

- High Density Closed Cell Nitrile rubber cushion has 15% recycled content
- Grease and oil proof, chemical resistant
- Welding Safe and static dissipative
- Beveled edges for safe transition from mat to floor
- Lifetime anti-microbial treatment to prevent odors and degradation of the mat
- Comfort Flow has drainage holes to allow liquids to flow through. Comfort Scape has non-draining surface
- Light weight and flexible for easy handling and cleaning
- Certified slip resistant by National Floor Safety Institute
- Recommended for kitchens and industrial applications

SIZES

2' x 3'
3' x 5'
4' x 6'
3' x 9'

Sizes are approximate.

COMFORT FLOW GRIT & COMFORT SCAPE GRIT

Comfort Flow grit
Comfort Scape grit

Product No. 4200
Product No. 4300

- Same features as above, but with an added aggressive silicon carbide anti-slip top surface



Cushion Station with holes



CUSHION STATION™

without holes Product No. 370
with holes Product No. 371

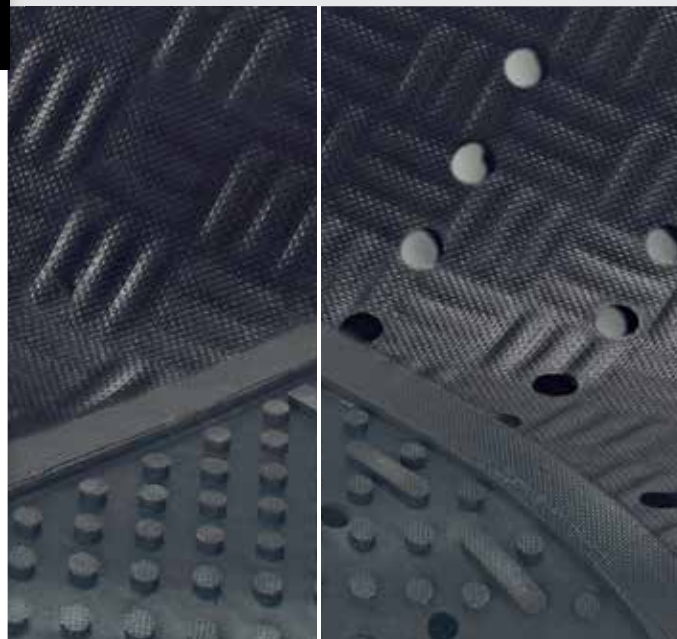
- Highly durable closed-cell Nitrile rubber cushion combined with uniquely designed construction affords excellent anti-fatigue properties
- Grease and oil proof
- Static dissipative
- Welding safe
- Designed for use in wet or dry areas. Available with and without holes
- Anti-microbial treated for lifetime protection against odors and degradation
- 7/16" thick; available in standard sizes up to 20' long
- Flexible Nitrile cushion construction can be cleaned easily
- May be Autoclave sterilized
- Cushion Station™ mats are ideal for use in machine shops, work stations or other heavy industrial applications, medical facility environments (i.e., operating rooms, delivery rooms, etc.) kitchens, showers, and locker rooms

SIZES

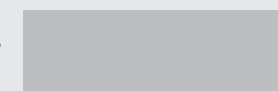
2' x 3.2'
3.2' x 5.3'
3.2' x 8.3'
3.2' x 12.3'
3.2' x 16.1'
3.2' x 20.1'
4' x 5.92'
4' x 8.3'
4' x 12.3'
4' x 16.1'
4' x 20.1'

Sizes are approximate.

ANTI-FATIGUE/DRY OR WET ENVIRONMENTS/INDOOR



7/16"



Dense closed-cell Nitrile rubber cushion



MADE
IN THE
USA



Cushion Max
without holes

a
the andersen company

CUSHION MAX

with holes Product No. 413
without holes Product No. 414

ANTI-FATIGUE/DRY OR WET ENVIRONMENTS/INDOOR



without holes



with holes

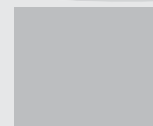
- Closed-cell Nitrile blended cushion
- Chemical Resistant, Grease & Oil Proof
- Diamond patterned top surface is certified slip resistant by National Floor Safety Institute
- Lasts 3 times longer than traditional 100% PVC foam mats
- Tapered border provides a safe transition from the mat to the floor
- 5/8" thick

SIZES

2' x 3'
3' x 5'
3' x 12'
4' x 6'
Additional lengths up to 45'. See price list for all additional sizes.

Sizes are approximate.

5/8"



Closed-cell
Nitrile blended
cushion

COMPLETE COMFORT™

without holes
with holes

Product No. 494
Product No. 496

- Ergonomically superior anti-fatigue mat
- 100% closed-cell Nitrile rubber construction with anti-microbial properties
- Beveled edges for easier floor to mat transition
- Slip resistant surface is oil/grease proof and chemical resistant
- Light weight and easy to clean
- Color: Black
- Recommended for wet and dry areas such as kitchens or industrial areas

SIZES

2' x 3'
3' x 4'
3' x 5'
3' x 10'
4' x 6'
4' x 8'
3' and 4' widths available in lengths up to 75'. See price list for all additional sizes. Sizes are approximate.

Complete Comfort without holes

Complete Comfort with holes

5/8"

Dense closed-cell
Nitrile rubber cushion

ANTI-FATIGUE/INDOOR-OUTDOOR

COMPLETE COMFORT™ II

Product No. 594

- High Density Closed Cell Nitrile Rubber Cushion has 15% recycled content
- Grease and oil proof, chemical resistant
- Welding safe and static dissipative
- Beveled edges for safe transition from mat to floor
- Lifetime anti-microbial treatment to prevent odors and degradation
- May be Autoclave sterilized
- Certified slip resistant by the National Floor Safety Institute
- Recommended for use in wet or dry environments for healthcare, foodservice and industrial application

SIZES

2' x 3'
3' x 4'
3' x 5'
4' x 6'

Sizes are approximate.

back

Complete Comfort II



Happy Feet
textured surface
caution yellow border



HAPPY FEET™

BLACK BORDER

textured surface

Product No. 465

grip surface

Product No. 475

Linkable

textured surface: end

Product No. 467

textured surface: middle

Product No. 469

grip surface: end

Product No. 477

grip surface: middle

Product No. 479

STRIPED BORDER

textured surface

Product No. 466

grip surface

Product No. 476

Linkable

textured surface: end

Product No. 468

textured surface: middle

Product No. 470

grip surface: end

Product No. 478

grip surface: middle

Product No. 480



Happy Feet Linkable
grip surface
caution yellow border

(enlarged view)

ANTI-FATIGUE/DRY OR WET ENVIRONMENTS/INDOOR



grip surface



textured surface

- Constructed with a dense cushion encapsulated within oil/grease proof Nitrile rubber
- Green friendly, Nitrile rubber has 20% recycled content
- Electrically conductive. Safe for use in computer rooms and electrical part manufacturing areas.
- Certified slip-resistant by the National Floor Safety Institute
- Cleated back to minimize movement and maximize safety. Additional safety is provided by low profile, beveled borders. Will not curl or crack.
- Available with OSHA approved striped borders
- Welding safe
- Available in 2 surface types...
Textured Surface: For dry/damp areas where traction is unnecessary. Grip Surface: For wet areas where maximum traction and/or scraping is needed.

MAT SIZES

2' x 3'

3' x 5'

Sizes are approximate.

LINKABLE SIZES

Linkable

End

34" x 59.875"

Linkable

Middle

34" x 61.25"



01 danger red

02 caution yellow

03 warning orange

04 safety green

black



the andersen company

COMFORT MATE

1/2" black

1/2" red

7/8" black

7/8" red

Product No. 301

Product No. 302

Product No. 303

Product No. 304

- Black Comfort Mate mats are grease-resistant
- Red Comfort Mate mats are made of a Grease and Oil proof Nitrile Rubber compound
- Comfort Mate 1/2" features ramp borders for smooth transition from mat to floor
- 7/8" thick Comfort Mate edges are squared off
- Connectors are available for 7/8" (Product No. 31)
- Comfort Mate Red and Black are designed with large holes for maximum drainage

SIZES

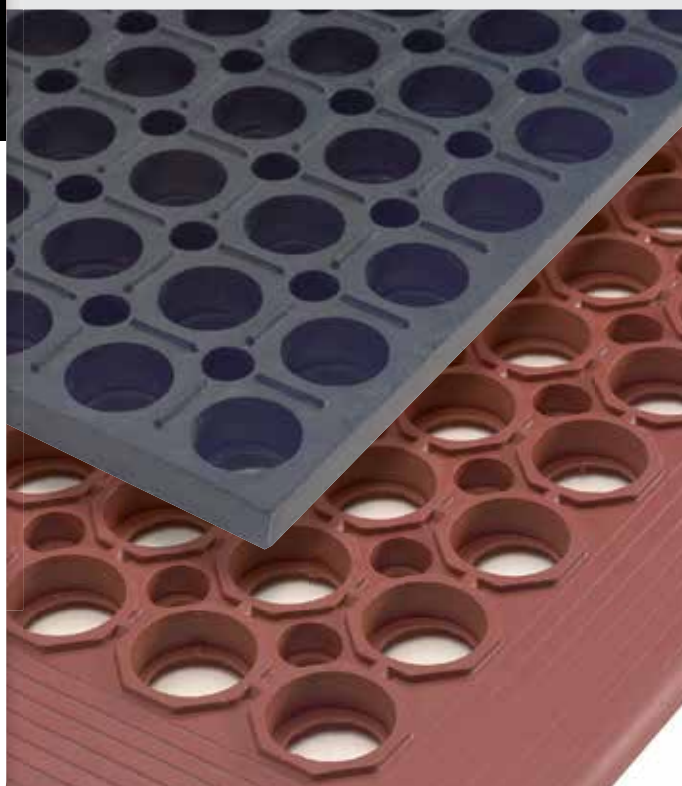
3' x 5'

Sizes are approximate.



Connectors

ANTI-FATIGUE/DRY OR WET ENVIRONMENTS/INDOOR



100%
customer satisfaction
GUARANTEED

KNEELING COMFORT™

Product No. 433

- Closed-cell blended Nitrile rubber cushion with Nitrile rubber base – 7/8" thick
- Electrically conductive, grease/oil proof
- Will not absorb liquids
- Reduces knee trauma and low back stress
- Built-in handle is convenient to carry & store
- Cleans easily with soap and water
- Ideal for occupations that require kneeling such as construction workers, technicians, mechanics, engineers, utility workers, manufacturers or anyone who moves from place to place to perform work tasks

SIZES

12" x 22"
18" x 30"

Sizes are approximate.



- 100% Nitrile rubber base
- closed cell Nitrile rubber cushion



the andersen company

SURE CUSHION RIBBED

Product No. 415

- 3/8" ribbed PVC foam*

SIZES

2' x 3'	2' x 60'
3' x 5'	3' x 60'
3' x 12'	4' x 60'

Additional lengths up to 60'. See price list for all additional sizes.
Sizes are approximate.

the andersen company

SURE CUSHION TEXTURE

Product No. 425

- 3/8" textured PVC foam*

SIZES

2' x 3'	3' x 12'
3' x 5'	3' x 60'

Additional lengths up to 60'. See price list for all additional sizes.
Sizes are approximate.

the andersen company

SURE CUSHION HEAVY DUTY

Product No. 428

- 1/2" PVC foam for heavy use areas*
- 80 mil solid vinyl surface combined with a non-closed cell vinyl cushion back
- Beveled on all sides for safety

SIZES

2' x 3'	3' x 12'
3' x 5'	3' x 60'

Additional lengths up to 60'. See price list for all additional sizes.
Sizes are approximate.

the andersen company

SURE CUSHION YELLOW BORDER

Product No. 427

- 3/8" PVC foam with yellow border on two sides*

SIZES

2' x 3'	3' x 12'
3' x 5'	3' x 60'

Additional lengths up to 60'. See price list for all additional sizes.
Sizes are approximate.

the andersen company

SURE TREAD V-GROOVE

Product No. 505

- 1/8" solid vinyl
- Chemical resistant
- Provides protection for all types of floors from abuse due to chairs, tables and foot traffic
- Great for walkways, inclines and ramps
- Can be rolled for easy storage

SIZES

3' x 105'
4' x 105'

Additional lengths available.
Sizes are approximate.

ANTI-FATIGUE/FLOOR PROTECTION/INDOOR

Sure Cushion Ribbed

Sure Cushion Texture

Sure Cushion Heavy Duty

Sure Cushion Yellow Border

Sure Tread V-Groove

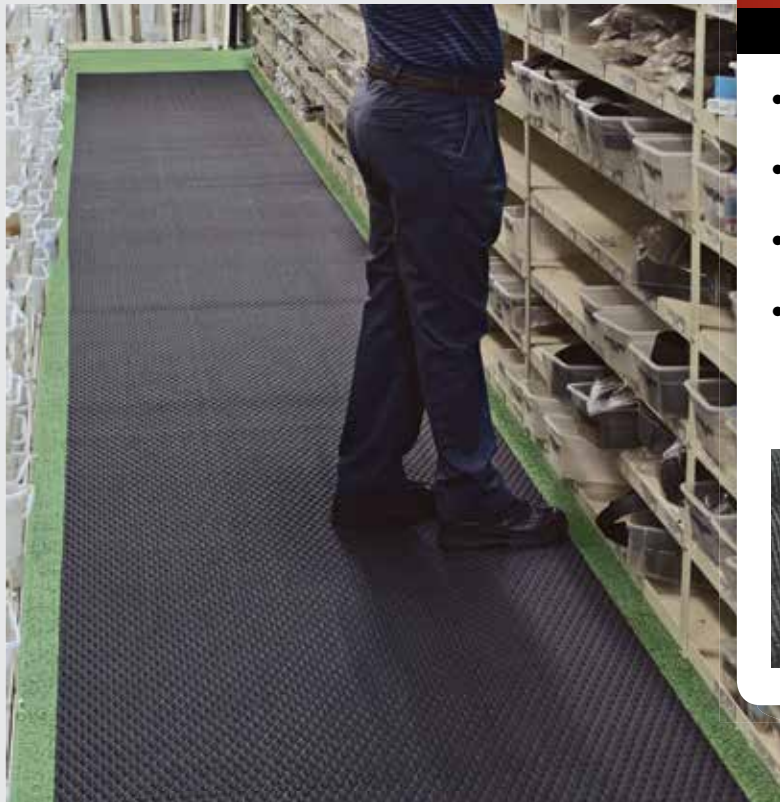
* NOT guaranteed against damage from high heels, casters or chair legs. Not recommended for use in wet areas.

100%
customer satisfaction
GUARANTEED

**MADE
IN THE
USA**

TRACTION TREAD

Product No. 50



- Slip-resistant floor protection matting made from chemical-resistant Nitrile rubber
- 1/8" thick, 20% post-consumer recycled rubber content
- UV protected, grease/oil-proof, welding safe and electrically conductive
- Designed for various applications including laboratories, locker rooms, parts departments, and other commercial and industrial applications

SIZES

33" x 40' Roll
44" x 40' Roll
58" x 40' Roll

See price list for all additional sizes.

Sizes are approximate.



1/8"

Nitrile rubber

TRACTION TREAD SOFT

Product No. 56

- Slip-resistant floor protection matting made from chemical-resistant, high density Nitrile rubber foam
- 1/4" thick and contains 15% post-consumer recycled rubber content
- UV protected, grease/oil-proof, welding safe and static dissipative
- Anti-microbial treated
- Ideal for numerous production locations, walkways, gym floor protection, parts counters, lab areas and food service applications

SIZES

33" x 40' Roll
44" x 40' Roll
58" x 40' Roll

See price list for all additional sizes.

Sizes are approximate.



1/4"

High density Nitrile rubber foam





TRACTION HOG II™

without holes
drainable (with holes)

Product No. 4418
Product No. 4419

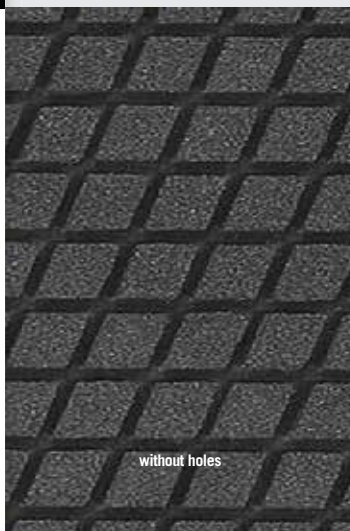
- Diamond Patterned Grit Top provides a slip resistant surface in wet and oily environments
- High Density Closed Cell Nitrile Rubber Cushion has 15% recycled content
- Grease and oil proof, chemical resistant
- Welding Safe
- Beveled edges for safe transition from mat to the floor
- Lifetime anti-microbial treatment to prevent odors and degradation of the mat
- Drainage holes allow liquids to flow off the mat
- Backing designed to reduce the movement of the mat even with cart traffic
- Flexible for easy handling
- Recommended for kitchens, coolers, freezers and industrial applications

SIZES

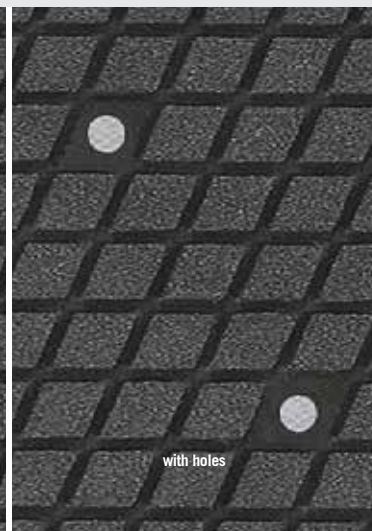
3' x 5'
3' x 9'

Sizes are approximate.

SLIP-RESISTANT/WET ENVIRONMENTS/INDOOR



without holes



with holes

1/4"

High Density
Closed Cell Nitrile
Rubber Cushion



MADE
IN THE
USA

INTERIOR



Corrugated Switchboard

a
the andersen company

CORRUGATED SWITCHBOARD

Product No. 781

- 1/4"; non-conductive
- Type II, Class 2 meets additional testing for Flame, Oil and Ozone resistance
- Protects workers from electrical shock by insulating against high voltage
- Corrugated Switchboard matting conforms to ASTM testing D-178-01
- Tested dielectric strength 30,000 volts
- Maximum use voltage is 17,000 volts

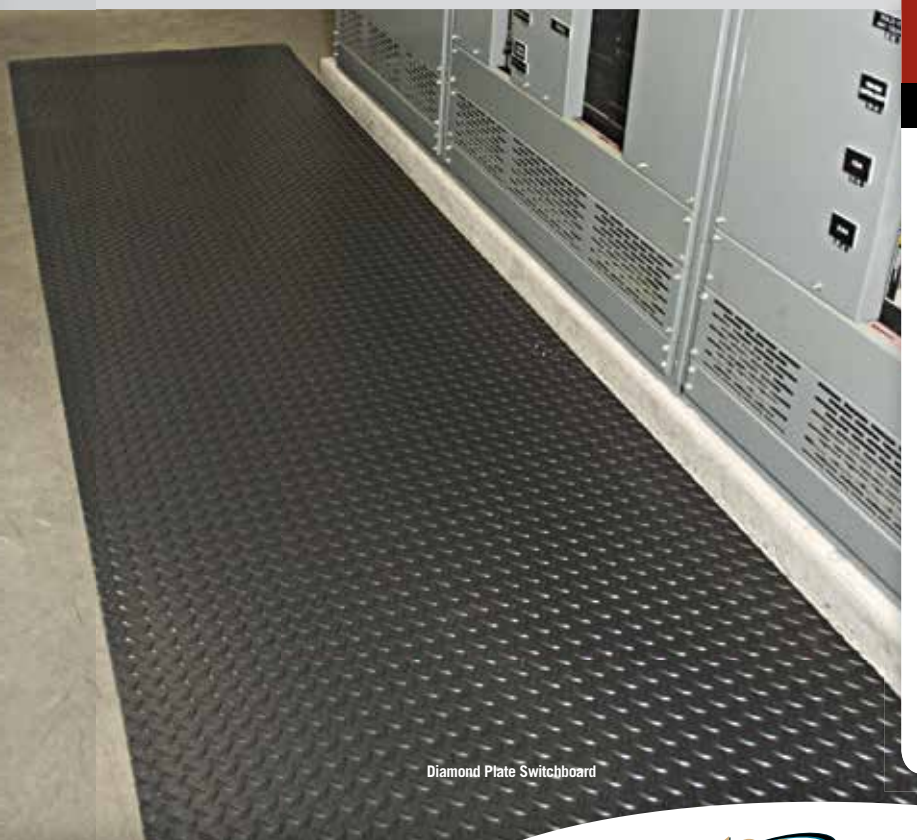
SIZES

24" x 75'
36" x 75'
48" x 75'

Additional lengths up to 75'. See price list for all additional sizes. Sizes are approximate.



INTERIOR



Diamond Plate Switchboard

a
the andersen company

DIAMOND PLATE SWITCHBOARD

Product No. 783

- 1/4"; non-conductive
- Type II, Class 2 meets additional testing for Flame, Oil and Ozone resistance
- Protects workers from electrical shock by insulating against high voltage
- Diamond Plate Switchboard matting conforms to ASTM testing D-178-01
- Tested dielectric strength 30,000 volts
- Maximum use voltage is 17,000 volts

SIZES

36" x 75'

Sizes are approximate.



MILITARY SWITCHBOARD DIAMOND

Product No. 784

- 3/16"; non-conductive
- Meets strict Military specification standard MIL-DTL 15562G
- Type III - PVC runner material protects workers in high voltage use areas
- Dielectric Strength: The floor covering shall not fail at less than 30,000 volts when tested as specified - MIL-DTL 15562G

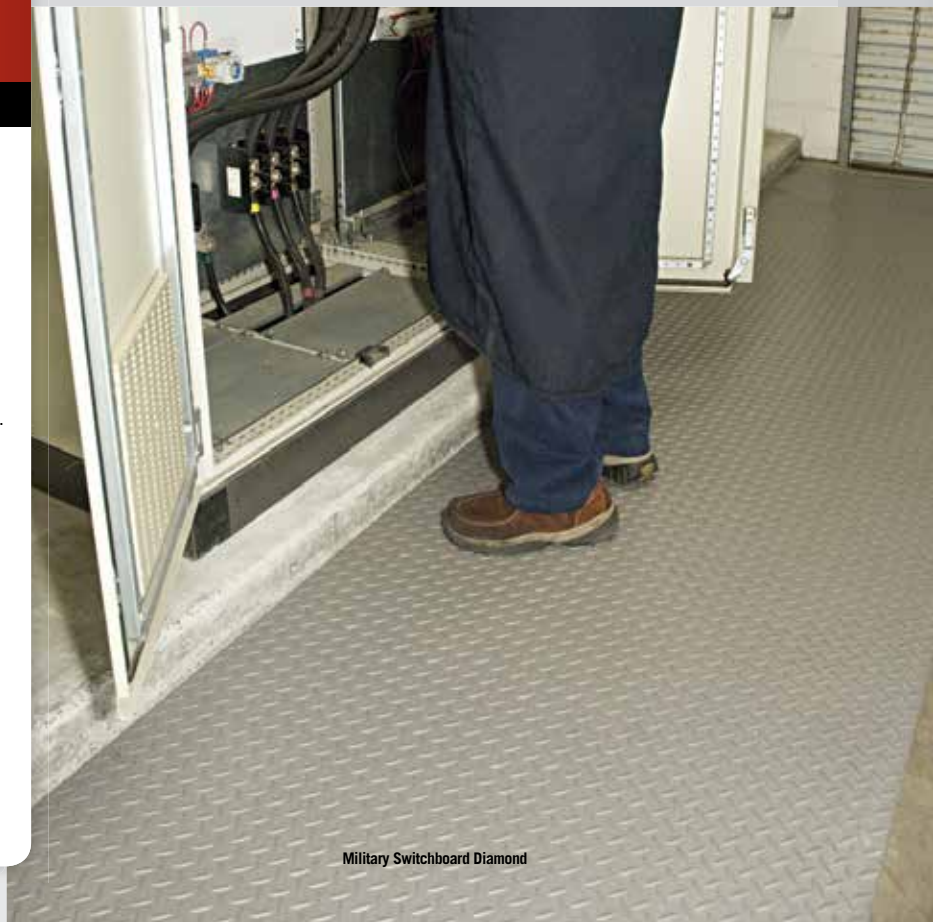
SIZES

36" x 75'

Sizes are approximate.



INTERIOR



Military Switchboard Diamond

MILITARY SWITCHBOARD SMOOTH

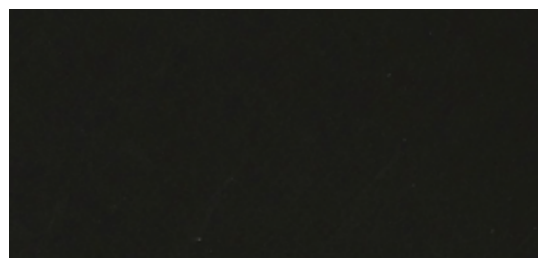
Product No. 782

- 1/8"; non-conductive
- Meets strict Military specification standard MIL-DTL 15562G
- Type II - PVC runner material protects workers in high voltage use areas
- Dielectric Strength: The floor covering shall not fail at less than 30,000 volts when tested as specified - MIL-DTL 15562G

SIZES

36" x 75'

Sizes are approximate.



INTERIOR



Military Switchboard Smooth





ERGONOMIC MODULAR TILE MAT COLLECTION

HOG HEAVEN™ II MODULAR TILE COMFORT
HOG HEAVEN™ II MODULAR TILE COMFORT w/GRIT
HOG HEAVEN™ II LINKABLE MATS COMFORT
HOG HEAVEN™ II LINKABLE MATS COMFORT w/GRIT
HOG HEAVEN™ II WORKSTATION MATS COMFORT
HOG HEAVEN™ II WORKSTATION MATS COMFORT w/GRIT
HOG HEAVEN™ II MODULAR TILE TRAFFIC
HOG HEAVEN™ II MODULAR TILE TRAFFIC DRAINABLE
HOG HEAVEN™ II MODULAR TILE FASHION
HOG HEAVEN™ II LINKABLE MATS FASHION
HOG HEAVEN™ II WORKSTATION MATS FASHION
HOG HEAVEN™ II MODULAR TILE MARBLE
COMFORT FLOW™ HD MODULAR TILE
COMFORT FLOW™ HD MODULAR TILE w/GRIT
COMFORT FLOW™ HD LINKABLE MATS
COMFORT FLOW™ HD LINKABLE MATS w/GRIT
COMFORT FLOW™ HD WORKSTATION MATS
COMFORT FLOW™ HD WORKSTATION MATS w/GRIT
COMFORT SCRAPE™ HD MODULAR TILE
COMFORT SCRAPE™ HD MODULAR TILE w/GRIT
COMFORT SCRAPE™ HD LINKABLE MATS
COMFORT SCRAPE™ HD LINKABLE MATS w/GRIT
COMFORT SCRAPE™ HD WORKSTATION MATS
COMFORT SCRAPE™ HD WORKSTATION MATS w/GRIT
CUSHION STATION™ HD MODULAR TILE
CUSHION STATION™ HD MODULAR TILE w/HOLES
CUSHION STATION™ HD LINKABLE MATS
CUSHION STATION™ HD LINKABLE MATS w/HOLES
CUSHION STATION™ HD WORKSTATION MATS
CUSHION STATION™ HD WORKSTATION MATS w/HOLES



Hog Heaven II Modular Tile Comfort
yellow border

ANTI-FATIGUE/DRY ENVIRONMENTS

HOG HEAVEN II MODULAR TILE COMFORT



Corner Tile



Middle Tile



Side Tile

HOG HEAVEN II LINKABLE MATS COMFORT



Linkable Mat End



Linkable Mat Middle



Linkable Mat End

HOG HEAVEN™ II MODULAR TILE COMFORT and HOG HEAVEN™ II LINKABLE MATS COMFORT

18" x 18" Modular Tile	Product No. 522
36" x 36" Modular Tile	Product No. 523
Linkable Mat black border	Product No. 4210
Linkable Mat yellow border	Product No. 4211

- Outstanding anti-fatigue qualities for dry areas
- Solid 20% recycled Nitrile Rubber top surface has excellent chemical and oil resistance
- Closed cell Nitrile Rubber cushion provides long lasting comfort
- Welding safe
- Nitrile Rubber surface is molded to the cushion backing (not glued) so the surface will not delaminate
- Rubber surface remains flexible for the life of the product and will not curl or crack
- Borders available in black or yellow striped
- Electrically conductive and certified slip resistant by the National Floor Safety Institute
- Recommended for distribution, manufacturing and retail facilities for picking lines, assembly lines, work stations, check-out stations and more

HOG HEAVEN™ II MODULAR TILE COMFORT with GRIT and HOG HEAVEN™ II LINKABLE MATS COMFORT with GRIT

18" x 18" Modular Tile with grit	Product No. 524
36" x 36" Modular Tile with grit	Product No. 525
Linkable Mat black border with grit	Product No. 4212
Linkable Mat yellow border with grit	Product No. 4213

- Same features as above but with an added aggressive silicon carbide anti-slip top surface

HOG HEAVEN™ II WORKSTATION MATS COMFORT

Black border	Product No. 4216
Yellow Border	Product No. 4217
Black border w/ith grit	Product No. 4218
Yellow Border with grit	Product No. 4219

MODULAR TILE SIZES

18" x 18"
Middle-01
18" x 18" x 3/4"
Side Black-02
18" x 21.875" x 3/4"
Corner Black-03
21.875" x 21.875" x 3/4"
Side Yellow-04
18" x 21.875" x 3/4"
Corner Yellow-05
21.875" x 21.875" x 3/4"

36" x 36"
Middle-01
36" x 36" x 3/4"
Side Black-02
36" x 39.875" x 3/4"
Corner Black-03
39.875" x 39.875" x 3/4"
Side Yellow-04
36" x 39.875" x 3/4"
Corner Yellow-05
39.875" x 39.875" x 3/4"

Color: Black with Black border or Yellow border
NOTE: Hog Heaven II Modular Tile Comfort is designed for square or rectangle installations only.

LINKABLE MAT SIZES

Mat End
39.875 x 43.75" x 3/4"
Mat Middle
36" x 43.75" x 3/4"

Color: Black with Black border or Yellow border

WORKSTATION MAT SIZES

43.75 x 43.75" x 3/4"

Patent pending



Hog Heaven II
Workstation Mats Comfort
yellow border



Hog Heaven II Modular Tile Comfort



Hog Heaven II Modular Tile Comfort with grit

**HOG HEAVEN II
MODULAR TILE
TRAFFIC**



**HOG HEAVEN™ II
MODULAR TILE TRAFFIC &
HOG HEAVEN II MODULAR TILE
TRAFFIC DRAINABLE**

18" Modular Tile	Product No. 516
36" Modular Tile	Product No. 517
18" Modular Tile, drainable	Product No. 518
36" Modular Tile, drainable	Product No. 519

- Firm ergonomic tile for workstations that require cart traffic
- Interlocks with Hog Heaven Modular Tile to create a complete ergonomic flooring system
- 15% recycled high density closed cell Nitrile Rubber
- 3/4" thickness
- Grease and oil proof, chemical resistant
- Welding Safe
- Static Dissipative
- Beveled edging available for safe transition from tile to floor

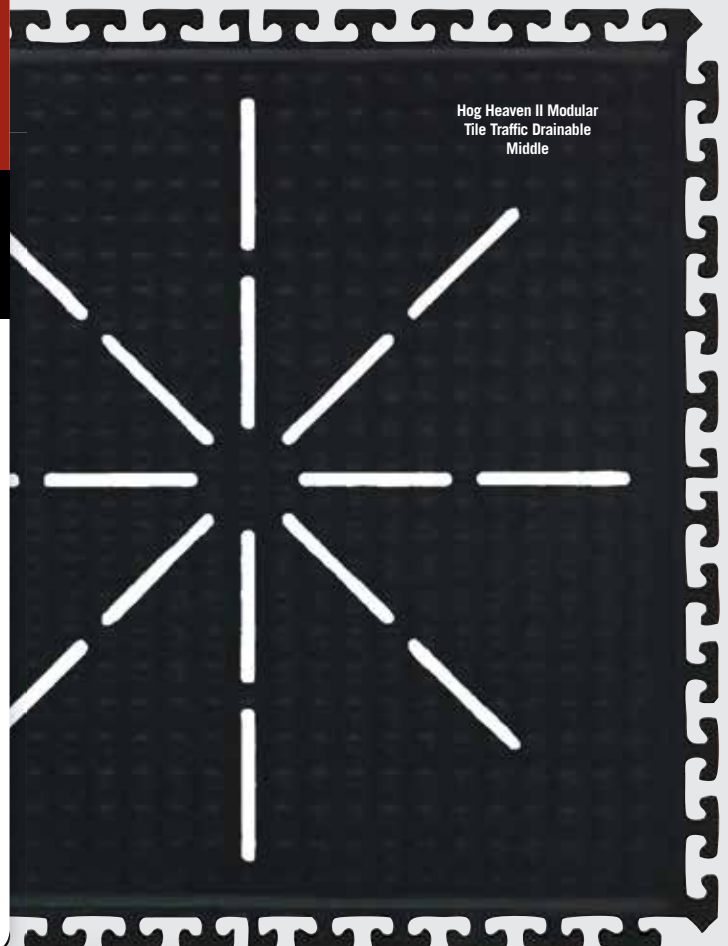
**MODULAR TILE
SIZES**

18" x 18"
Middle-01
18" x 18" x 3/4"
Side-02*
18" x 18" x 3/4"
Corner-03*
18" x 18" x 3/4"

36" x 36"
Middle-01
36" x 36" x 3/4"
Side-02*
36" x 36" x 3/4"
Corner-03*
36" x 36" x 3/4"

*Side and Corner tiles will have straight 90 degree sides on the non-linkable sides. Rubber or PVC edging will be available if required

Hog Heaven II Modular
Tile Traffic Drainable
Middle





Hog Heaven II
Workstation Mats Fashion
cobalt blue



Hog Heaven II
Modular Tile Fashion
granite



the andersen company

HOG HEAVEN™ II MODULAR TILE FASHION & LINKABLE MATS FASHION

18" Modular Tile
36" Modular Tile
Linkable Mats

Product No. 533
Product No. 534
Product No. 4410

- Anti-static, slip-resistant 100% solution-dyed polypropylene top surface will not fade
- Solution-dyed fabric is molded to a solid Nitrile rubber surface for best durability
- Closed-cell Nitrile rubber cushion backing keeps standing workers comfortable all day long
- Beveled border remains flexible for the life of the product and will not crack or curl
- All Hog Heaven™ mats are certified slip resistant by the National Floor Safety Institute
- 3/4" thick
- Ideal uses include concierge desk, bellman stand, copier station, registration desk, pharmacies and labs

MODULAR TILE SIZES

18" x 18"
Middle-01
18" x 18" x 3/4"
Side-02
18" x 21.875" x 3/4"
Corner-03
21.875" x 21.875" x 3/4"

36" x 36"
Middle-01
36" x 36" x 3/4"
Side-02
36" x 39.875" x 3/4"
Corner-03
39.875" x 39.875" x 3/4"

NOTE: Hog Heaven II Modular Tile Fashion is designed for square or rectangle installations

LINKABLE MAT SIZES

Mat End
39.875 x 43.75" x 3/4"
Mat Middle
36" x 43.75" x 3/4"

WORKSTATION MAT SIZES

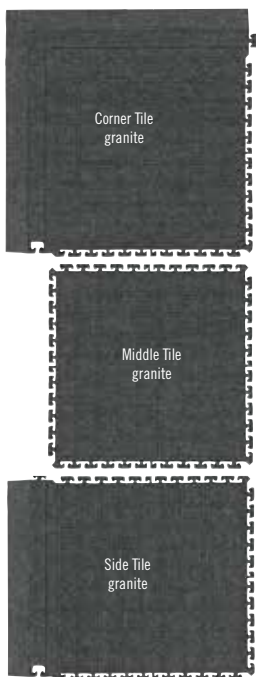
43.75 x 43.75" x 3/4"

HOG HEAVEN™ II WORKSTATION MATS FASHION

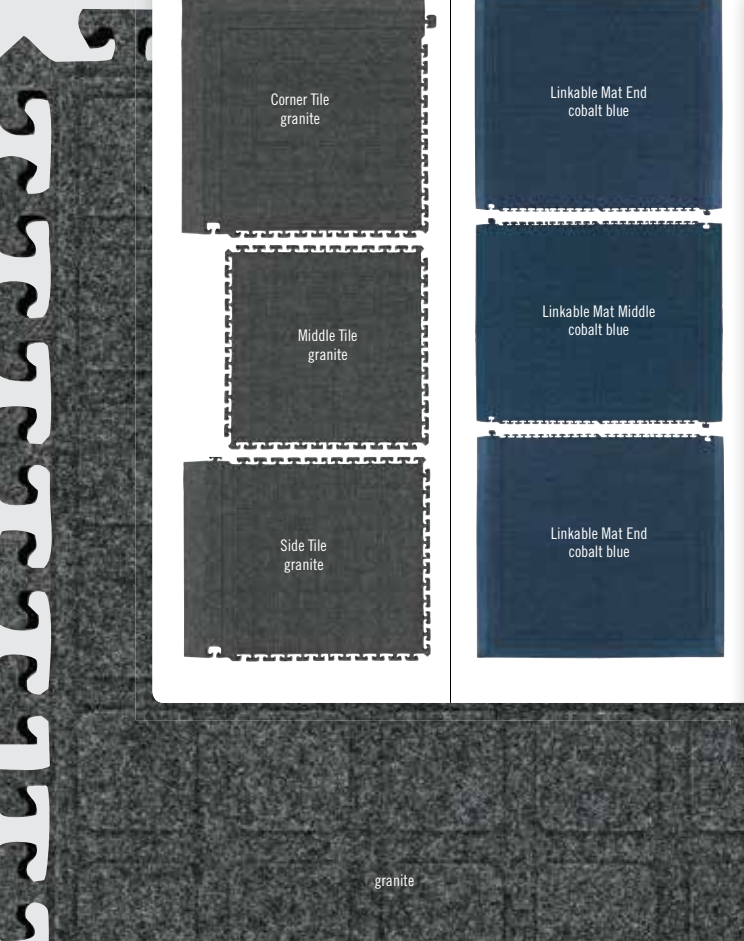
Product No. 4409

ANTI- FATIGUE/ INDOOR

HOG HEAVEN II MODULAR TILE FASHION



HOG HEAVEN II LINKABLE MATS FASHION



320 granite

321 cocoa brown

322 cobalt blue

323 coal black



HOG HEAVEN™ II MODULAR TILE MARBLE

18" Modular Tile Product No. 552
36" Modular Tile Product No. 553

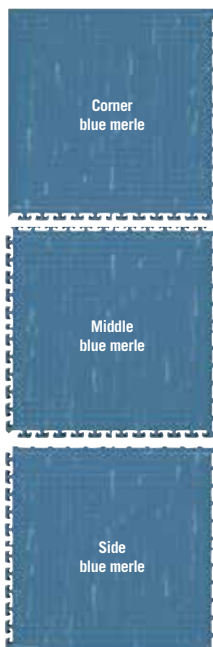
- Closed cell Nitrile cushion provides long lasting comfort
- Smooth diamond patterned top allows workers to pivot freely
- Surface is easy to clean
- Cushion is not glued on but permanently molded to rubber top, eliminating the possibility of delamination
- Versatile modular tile design allows for larger custom installations. Ideal for laboratories, pharmacies and other areas that require larger area coverage.
- 3/4" thickness

MODULAR TILE SIZES

18" x 18"
Middle-01
18" x 18" x 3/4"
Side-02*
18" x 18" x 3/4"
Corner-03*
18" x 18" x 3/4"
36" x 36"
Middle-01
36" x 36" x 3/4"
Side-02*
36" x 36" x 3/4"
Corner-03*
36" x 36" x 3/4"

*Side and corner pieces have straight 90 degree edge, not a beveled edge

HOG HEAVEN II MODULAR TILE MARBLE



ANTI-FATIGUE/INDOOR



10 midnight swirl

11 granite dusk

12 blue merle

13 amber maple





Comfort Flow HD
Modular Tile

MODULAR TILE SIZES

Corner tile
19.125" x 19.125" x 7/16"
37.375" x 37.375" x 7/16"

Side tile
18" x 19.125" x 7/16"
36" x 37.375" x 7/16"

Middle tile
18" x 18" x 7/16"
36" x 36" x 7/16"

LINKABLE MAT SIZES

Mat End
37.125" x 39" x 7/16"

Mat Middle
36" x 39" x 7/16"

WORKSTATION MAT SIZES

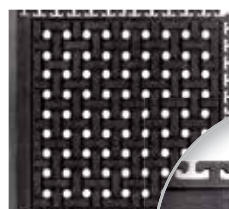
39" x 39" x 7/16"

**ANTI-FATIGUE/SLIP RESISTANT
DRY OR WET ENVIRONMENTS/INDOOR-OUTDOOR**

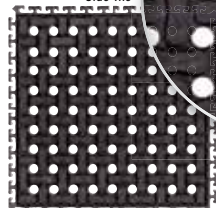


Comfort Scrape HD
Modular Tile

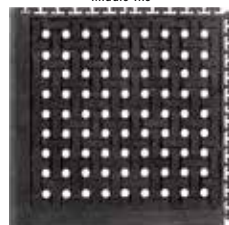
COMFORT FLOW HD MODULAR TILE



Side Tile

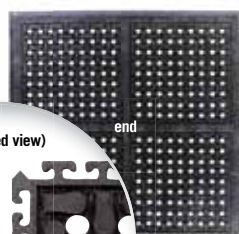


Middle Tile

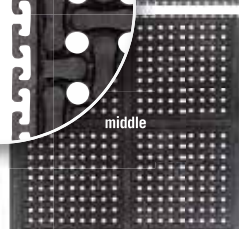


Corner Tile

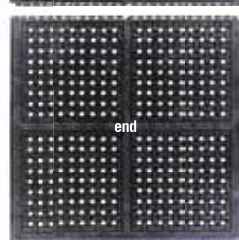
COMFORT FLOW HD LINKABLE MATS



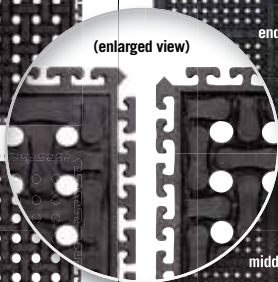
end



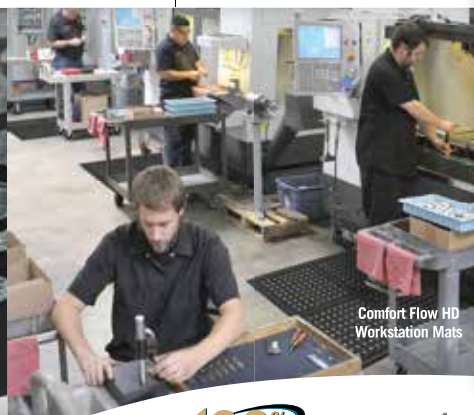
middle



end



(enlarged view)



Comfort Flow HD
Workstation Mats

COMFORT FLOW HD MODULAR TILE & LINKABLE MATS COMFORT SCRAPE HD MODULAR TILE & LINKABLE MATS

Comfort Flow HD Modular Tile	Product No. 4430
Comfort Scrape HD Modular Tile	Product No. 4431
Comfort Flow HD Linkable Mats	Product No. 4434
Comfort Scrape HD Linkable Mats	Product No. 4435

- High Density Closed Cell Nitrile Rubber Cushion has 15% recycled content
- Comfort Flow Modular Tiles can be custom fit in any work station configuration
- Lightweight and flexible for easy handling
- Welding safe
- Grease and oil proof, chemical resistant
- Static Dissipative and certified slip resistant by National Floor Safety Institute
- Beveled edges for safe transition from mat to floor
- Lifetime anti-microbial treatment to prevent odors and degradation of the mat
- Comfort Flow has drainage holes to allow liquids to flow through
- Comfort Scrape has non-draining surface
- Recommended for industrial and kitchen applications

COMFORT FLOW HD MODULAR TILE & LINKABLE MATS with GRIT COMFORT SCRAPE HD MODULAR TILE & LINKABLE MATS with GRIT

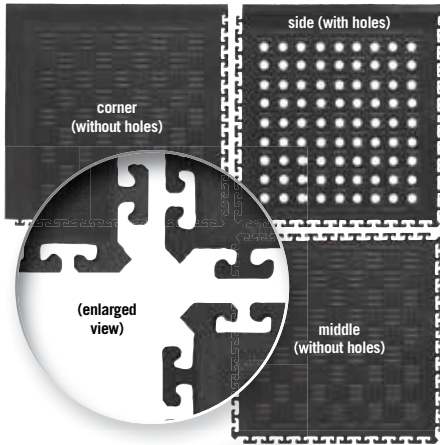
Comfort Flow Modular Tile/grit	Product No. 4432
Comfort Scrape Modular Tile/grit	Product No. 4433
Comfort Flow Linkable Mats/grit	Product No. 4436
Comfort Scrape Linkable Mats/grit	Product No. 4437

- Same features as above but with an added aggressive silicon carbide anti-slip top surface

COMFORT FLOW HD & COMFORT SCRAPE HD WORKSTATION MATS

Comfort Flow HD Workstation Mat	Product No. 4439
Comfort Scrape HD Workstation Mat	Product No. 4440
Comfort Flow HD Workstation Mat/grit	Product No. 4445
Comfort Scrape HD Workstation Mat/grit	Product No. 4446

CUSHION STATION HD MODULAR TILE



CUSHION STATION HD MODULAR TILE & LINKABLE MATS

Modular Tile without holes	Product No. 375
Modular Tile with holes	Product No. 376
Linkable Mats without holes	Product No. 3370
Linkable Mats with holes	Product No. 3371

- Highly durable and dense closed-cell Nitrile rubber cushion combined with uniquely designed construction affords excellent anti-fatigue properties
- 1/2" thick; grease and oil proof
- Static dissipative
- Welding safe
- Designed for use in wet or dry areas. Available with and without holes
- Anti-microbial treated for lifetime protection against odors and degradation
- Flexible Nitrile cushion construction can be cleaned easily
- May be Autoclave sterilized
- Cushion Station HD Modular Tile and Linkable Mats are ideal for use in kitchens, machine shops, work stations or other heavy industrial applications, medical facility environments (i.e., operating rooms, delivery rooms, etc.), showers, and locker rooms

MODULAR TILE SIZES

Corner tile
19.125" x 19.125" x 7/16"
37.375" x 37.375" x 7/16"

Side tile
18" x 19.125" x 7/16"
36" x 37.375" x 7/16"

Middle tile
18" x 18" x 7/16"
36" x 36" x 7/16"

LINKABLE MAT SIZES

Mat End
37.125" x 39" x 1/2"

Mat Middle
36" x 39" x 1/2"

WORKSTATION MAT SIZES

39" x 39" x 1/2"

CUSHION STATION HD WORKSTATION MATS

Workstation Mat without holes	Product No. 3372
Workstation Mat with holes	Product No. 3373

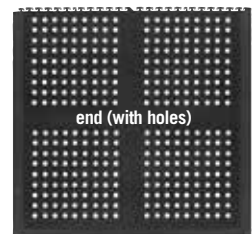
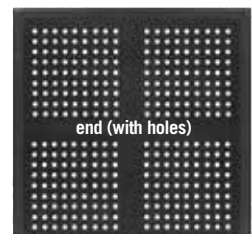
Cushion Station HD Modular Tile with holes

ANTI-FATIGUE/DRY OR WET ENVIRONMENTS/INDOOR

CUSHION STATION HD WORKSTATION MATS



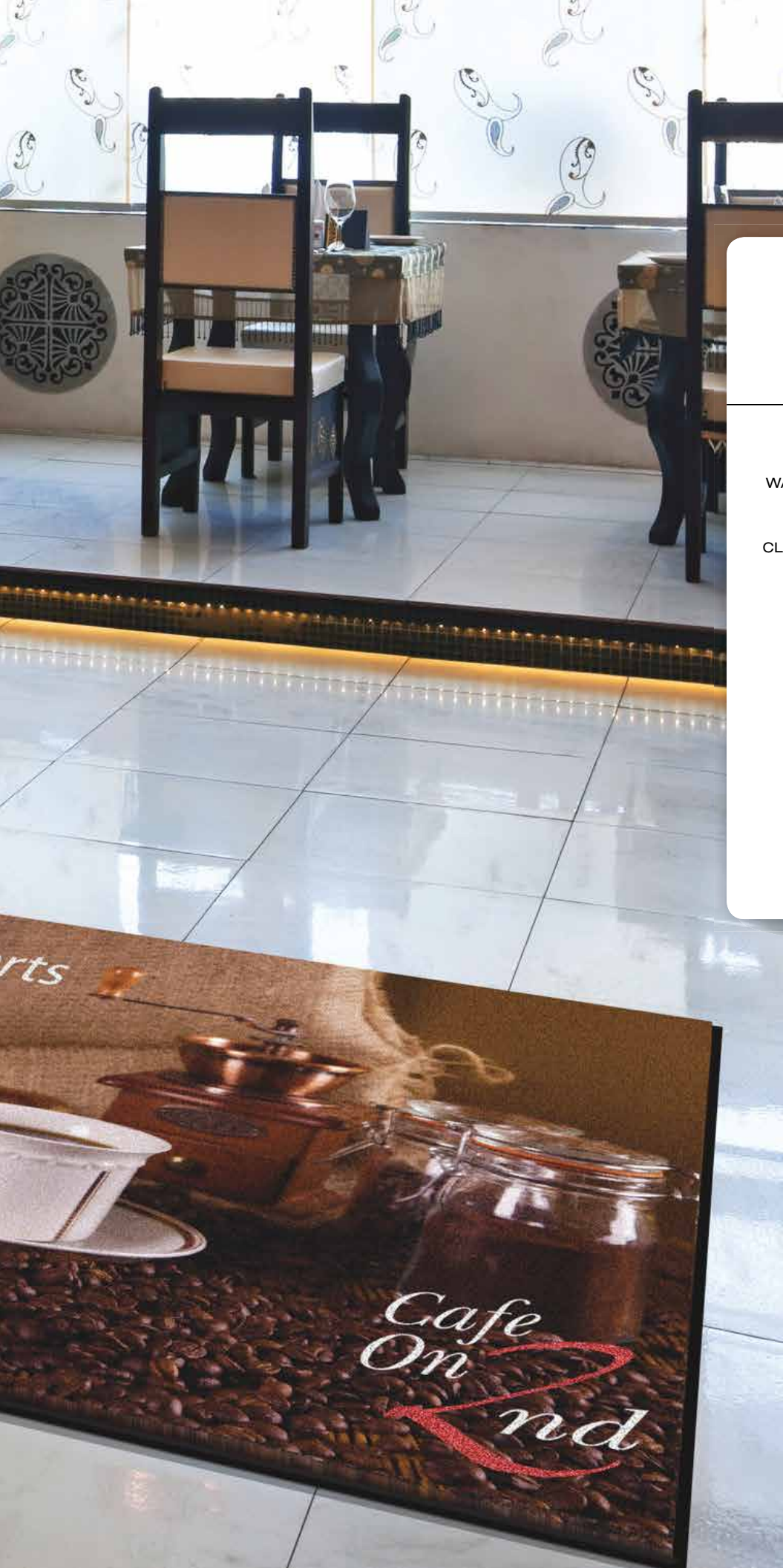
CUSHION STATION HD LINKABLE MATS



Cushion Station HD Modular Tile without holes







LOGO MAT, SIGN MAT & MESSAGE MAT COLLECTION

WATERHOG™ LOGO INLAY

WATERHOG™ ECO ELITE ROLL GOODS LOGO

BERBER ROLL GOODS LOGO

CLASSIC IMPRESSIONS™ HD CUSTOM SHAPE

CLASSIC IMPRESSIONS HD LOGO

GRAND IMPRESSIONS HD LOGO

CLASSIC IMPRESSIONS LOGO

SUPERSCAPE™ IMPRESSIONS LOGO

SUPERSCAPE™ SIGNATURE LOGO

WATERHOG™ SIGNATURE

WATERHOG™ SIGN

HOG HEAVEN™ SIGN

WILDLIFE

ORIENTAL



red/black
Classic border



ENTRANCE/SCRAPER-WIPER/INDOOR-OUTDOOR



Waterhog Classic



Rubber reinforced textile Rubber border

Waterhog Fashion



Rubber reinforced textile Fabric border

WATERHOG™ LOGO INLAY

Classic (rubber border)
Fashion (fabric border)

Product No. 234
Product No. 235

- 3/8" thick, 100% UV resistant polypropylene fabric for indoor and outdoor placements
- Molded rubber backing resists curling and cracking in all types of weather. Available in smooth and cleated backing types.
- Earth-friendly rubber backing has 20% post-consumer recycled content
- Designs are created using a unique inlay process that can include up to 19 colors per mat at no additional charge.
- Available with your choice of Classic Rubber border or Fashion Fabric border
- **No set up charge! Free proofs in 24 hrs!**
- Perfect for high traffic areas

SIZES

2' x 3'	4' x 8'
3' x 4'	4' x 10'
3' x 5'	4' x 12'
3' x 6'	4' x 16'
3' x 10'	4' x 20'
3' x 12'	6' x 8'
3' x 16'	6' x 12'
3' x 20'	6' x 16'
4' x 6'	6' x 20'

Sizes are approximate. See price list for all additional sizes.



150 camel 151 medium brown 152 dark brown 153 light green* 154 charcoal 155 red/black 156 medium blue 157 medium grey 158 bluestone 159 evergreen



160 bordeaux 161 navy 162 white* 163 aquamarine* 164 gold* 165 solid red* 166 yellow* 167 orange* 168 purple*

*These colors are ONLY available in 3' and 4' widths.



southern pine

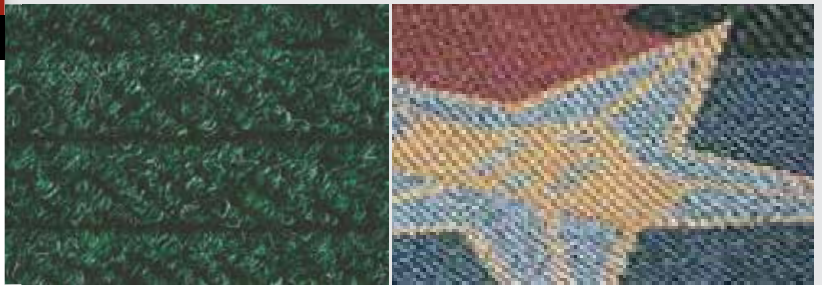


WATERHOG™ ECO ELITE ROLL GOODS LOGO

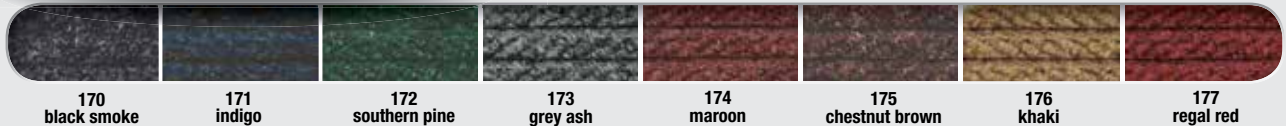
Product No. 2268

- No set up charge! Free proofs in 24 hrs!
- 17 logo colors and 8 background colors to choose from
- Designed to be installed like carpeting or loose laid like mats
- Custom sizes over 6' wide are seamed together
- Custom sizes available with or without edging up to 12' x 50'

ENTRANCE/SCRAPER-WIPER/INDOOR-OUTDOOR



BACKGROUND COLORS



LOGO COLORS



MADE
IN THE
USA



ENTRANCE/SCRAPER-WIPER/INDOOR-OUTDOOR

the andersen company

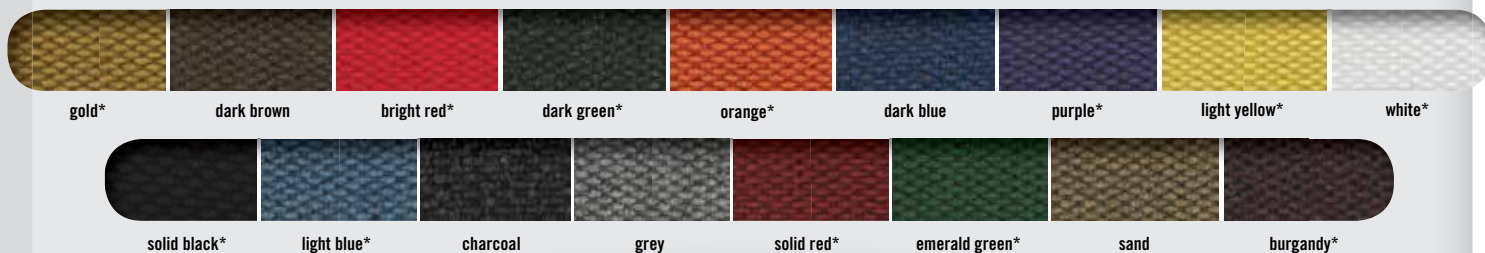
BERBER ROLL GOODS LOGO

Product No. 2283



- Heavy needle punched fabric has 52 oz/sq yd face weight; 3/8" thickness
- High performance rubber backing
- Polypropylene fabric is naturally stain resistant and easy to clean
- Solution dyed for excellent light & wet fastness
- Available in 6' x 125' rolls and 12' x 125' rolls or custom sizes up to 12' x 50'
- 17 colors to choose from
- No setup charges
- Great for large entrance area installations and custom size applications

COLORS



*Available in 6' width rolls only



CLASSIC IMPRESSIONS™ HD CUSTOM SHAPE

Product No. 733

- Heavy 32 oz/sq yd high twist heat-set nylon face fabric
- Heavy 90 mil rubber backing for added support and durability
- Rubber backing contains 20% recycled rubber from car tires
- Logos are printed onto carpet face; fine details and 3-D images are achievable
- 4 color process provides unlimited color options. PMS color matching is available with an upcharge.
- No set up charges, art proofs returned in 24 hours and fast ship times
- Certified slip resistant by National Floor Safety Institute

23' maximum length.
3', 4', 5' widths available in cleated and smooth backing. 6' in smooth backing only.
See color chart on page 38 for color availability. PMS custom color fee of \$500.00 for each custom color.

LOGO/WIPER/INDOOR



MADE
IN THE
USA



WIPER/INDOOR

CLASSIC IMPRESSIONS HD LOGO

SBR rubber border and backing
vinyl border and backing

Product No. 73
Product No. 73

GRAND IMPRESSIONS HD LOGO

serged border, recycled crumb rubber backing

Product No. 64

- Heavy 32 oz/sq yd high twist, heat-set nylon face fabric
- SBR rubber backing contains 20% recycled rubber from car tires. Also available with smooth vinyl backing
- Logos are printed onto carpet face; fine details, shading and 3-D images are achievable utilizing a state-of-the-art digital printer
- 150 standard color options available. PMS color matching is available with an upcharge.
- No set up charges, art proofs in 24 hours and fast ship times (3-5 business days)
- Available with cleated backing for placement on carpet or smooth backing for hard floor surfaces
- Certified slip resistant by National Floor Safety Institute
- Recommended for commercial buildings, hotels, restaurants, healthcare facilities, office buildings and more

SIZES

2' x 3'
3' x 4'
3' x 5'
3' x 10'
4' x 6'
4' x 8'
5' x 8'
5' x 10'
6' x 10'
6' x 12'

Sizes are approximate.
See price list for all additional sizes.





CLASSIC IMPRESSIONS

SBR or vinyl backing

Product No. 70

- 26 oz/sq yd 2-ply twist, heat-set nylon face fabric
- 3/8" thick, long-wearing, static-dissipative
- Earth-friendly rubber backing contains 20% post-consumer recycled content resists curling and cracking
- Available with cleated backing for placement on carpet or smooth backing for hard floor surfaces
- No set up charge! Fast Service!
- Recommended for commercial buildings, hotels, restaurants, health care facilities, office buildings and more
- Search over a million designs in our logo database at www.andersenco.com

SIZES

2' x 3'
3' x 4'
3' x 5'
3' x 10'
4' x 6'
4' x 8'
5' x 8'
5' x 10'
6' x 10'
6' x 12'

Sizes are approximate.
See price list for all additional sizes.

WIPER/INDOOR



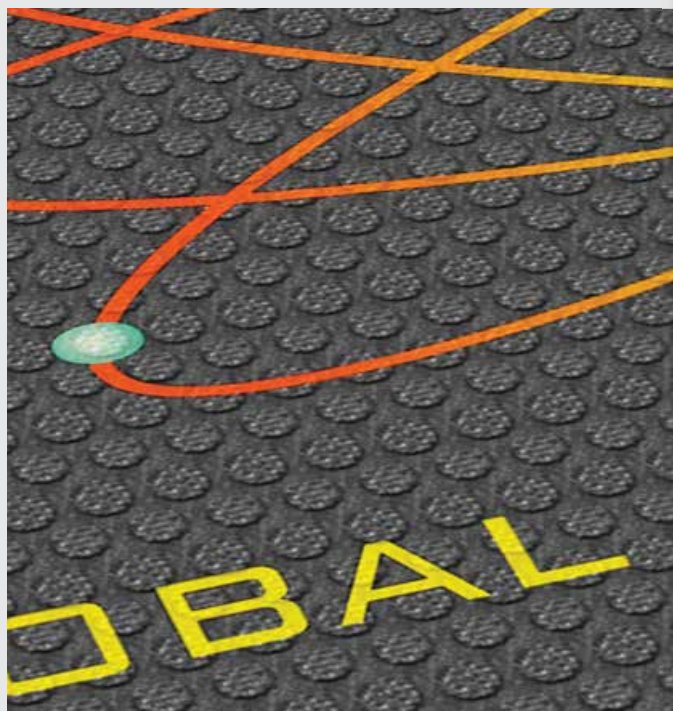


ENTRANCE/SCRAPER/INDOOR-OUTDOOR



SUPERSCAPE™ IMPRESSIONS LOGO

Product No. 3559



- Superscape™ Impressions Logo Mats offer a superior printing surface for your company logo or promotional message
- Photo-realistic images, produced with unparalleled detail and clarity, are created by molding a digitally printed polymeric material into a durable nitrile rubber
- 150 standard color options available. PMS color matching is available with an upcharge.
- Impervious to sunlight, these long-lasting logo mats perform beautifully in all types of environments
- Suitable for indoor or outdoor use, the high-traction surface effectively removes and traps tough dirt, grime and water from shoes
- Superscape™ Impressions are perfect for any application where colorful logo mats or message mats are needed
- 3/16" thickness. Resistant to oils and chemicals

SIZES

2.5' x 3'
3' x 5'
3' x 10'
4' x 6'
4' x 8'
6' x 6'
6' x 8'

Sizes are approximate.



SUPERSCAPE™ SIGNATURE LOGO

Product No. 3669

- Attractive multi color images are produced by molding a digitally printed thermo-plastic material into a durable nitrile rubber mat
- Photo realistic images produced with unparalleled detail and clarity
- 150 standard color options available. PMS color matching is available with an upcharge.
- Images are UV resistant and perform well in all types of environments
- Super Scrape Signature mats may be used inside or out and are ideal for facilities that need scraping performance while promoting their company image
- Super Scrape Signature mats come in 3' x 5' and 4' x 6' sizes in either horizontal or vertical orientations

SIZES

3' x 5'
4' x 6'
Logo is placed in the lower right corner of mat in either a horizontal or vertical direction.

Sizes are approximate.

ENTRANCE/SCRAPER/INDOOR-OUTDOOR



MADE
IN THE
USA



the andersen company

WATERHOG™ SIGNATURE

Waterhog Signature Classic Product No. 3668
Waterhog Signature Fashion Product No. 3667

ENTRANCE/SCRAPER-WIPER/INDOOR-OUTDOOR



- Perfect for high traffic areas where a company logo mat with scraper/wiper capability is needed
- 3/8" thick, 100% UV resistant polypropylene fabric for indoor and outdoor placements
- Molded rubber backing resists curling and cracking in all types of weather. Available in smooth and cleated backing types.
- 150 standard color options available. PMS color matching is available with an upcharge.
- Earth-friendly rubber backing has 20% post-consumer recycled content
- Logo area is molded into the rubber

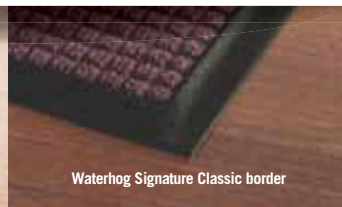
SIZES

3' x 5' 4' x 6'
Sizes are approximate. Logo is placed in the lower right corner of mat in either a horizontal or vertical direction.

Logo area size: 7.5" x 13"



Waterhog Signature Fashion border



Waterhog Signature Classic border



150 camel 151 medium brown 152 dark brown 153 light green 154 charcoal 155 red/black 156 medium blue 157 medium grey 158 bluestone 159 evergreen 160 bordeaux 161 navy



the andersen company

WATERHOG™ SIGN

Waterhog Classic Sign
Waterhog Fashion Sign

Product No. 206
Product No. 281

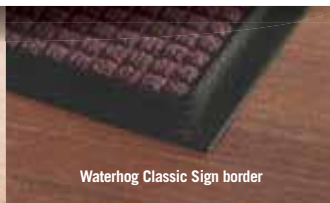
- Perfect for high traffic areas where a message mat with scraper/wiper capability is needed
- 3/8" thick, 100% UV resistant polypropylene fabric for indoor and outdoor placements
- Molded rubber backing resists curling and cracking in all types of weather. Available in smooth and cleated backing types.
- Earth-friendly rubber backing has 20% post-consumer recycled content
- Sign is molded into the rubber

SIZES

3' x 5' 4' x 6'
Sizes are approximate.
Sign Message is placed in the lower right corner of mat in either a horizontal or vertical direction.
Message size: 7.5" x 13"



Waterhog Fashion Sign border



Waterhog Classic Sign border



Waterhog Fashion Sign



150 camel 151 medium brown 152 dark brown 153 light green 154 charcoal 155 red/black 156 medium blue 157 medium grey 158 bluestone 159 evergreen 160 bordeaux 161 navy



**MADE
IN THE
USA**



caution yellow border

ANTI-FATIGUE/DRY OR WET ENVIRONMENTS/INDOOR



caution yellow border



black border

the andersen company

HOG HEAVEN™ SIGN

black border 5/8"

yellow border 5/8"

black border 7/8"

yellow border 7/8"

Product No. 511

Product No. 513

Product No. 512

Product No. 514

- Anti-fatigue mats that convey safety messages
- Nitrile rubber top surface has 20% recycled content
- Closed cell Nitrile blended cushion is permanently molded (not glued) to the Nitrile rubber top surface
- Chemical Resistant, Grease & Oil Proof
- Static Dissipative and certified slip resistant by National Floor Safety Institute
- 5/8" and 7/8" thickness
- Borders are beveled and are available in black or OSHA approved yellow

SIZES

3' x 5' 4' x 6'

Sign Message is placed in the center of mat in either a horizontal or vertical direction.

Message Size: 7" x 14"

WIPER/INDOOR



Deer
Artist: Rosemary Millette
4' x 6'
Horizontal
Rubber Border



a
the andersen company

WILDLIFE

on SBR (with rubber border) or on recycled crumb rubber (with serged border) Product No. 812

- Heavy 32 oz/sq yd high twist, heat-set nylon face fabric
- SBR rubber backing contains 20% recycled rubber from car tires
- Features artwork from five renowned Wild Wings® artists
- Wiper mat captures moisture and fine dirt particles while helping to reduce slip-and-fall accidents
- Available with smooth recycled crumb rubber backing and serged borders, or SBR backing and rubber borders
- Mats will compliment any business and are ideal for high traffic, indoor applications such as sporting good stores, hardware stores, restaurants, bars and lodges

SIZES

3' x 5'
4' x 6'

Visit our website or mobile app to view other horizontal and vertical designs available. Sizes are approximate.

a
the andersen company

ORIENTAL

on SBR (with rubber border) or on recycled crumb rubber (with serged border) Product No. 814

- Heavy 32 oz/sq yd high twist, heat-set nylon face fabric
- SBR rubber backing contains 20% recycled rubber from car tires
- Design is printed onto carpet face utilizing a state-of-the-art digital printer
- Wiper mat captures moisture and fine dirt particles while helping to reduce slip-and-fall accidents
- Available with smooth recycled crumb rubber backing with serged border, or SBR backing and rubber borders
- Mats will compliment any business and are ideal for high traffic, indoor applications
- Available in four colorations

SIZES

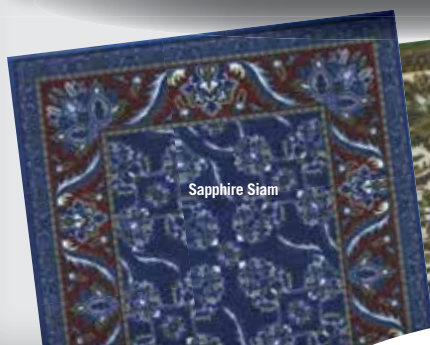
2' x 3'
3' x 5'
3' x 10'
4' x 6'
6' x 8'

Sizes are approximate.

WIPER/INDOOR



Scarlet Siam



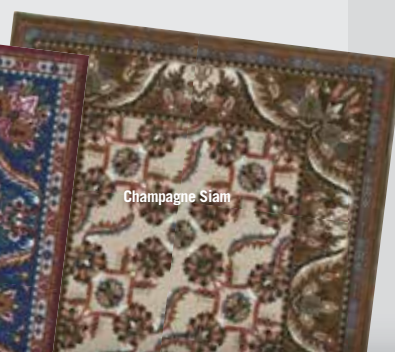
Sapphire Siam



Jade Siam



Scarlet Siam



Champagne Siam

100%
customer satisfaction
GUARANTEED

NFSI
HIGH-TRACTION



MADE
IN THE
USA

www.andersenco.com





ENTRANCE MAT AND TILE COLLECTION

WATERHOG™ ECO GRAND ELITE
WATERHOG™ ECO GRAND PREMIER
WATERHOG™ GRAND CLASSIC
WATERHOG™ ECO ELITE
WATERHOG™ ECO ELITE FASHION
WATERHOG™ ECO PREMIER
WATERHOG™ ECO PREMIER FASHION
WATERHOG™ CLASSIC
WATERHOG™ FASHION
WATERHOG™ DRAINABLE
WATERHOG™ CLASSIC DIAMOND
WATERHOG™ FASHION DIAMOND
WATERHOG™ ECO ELITE ROLL GOODS
WATERHOG™ CLASSIC TILE
SUPERSRAPE™ PARQUET TILE
SUPERSRAPE™ ECO
SUPERSRAPE™
ECO SELECT
WATERHOG™ DIAMONDCORD
WATERHOG™ MASTERPIECE SELECT
BRUSH HOG
BRUSH HOG PLUS
FLEX TIP™
FRONTIER



two ends
maroon



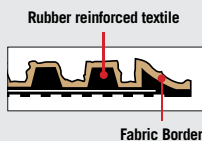
one end
khaki



ENTRANCE/SCRAPER-WIPER/INDOOR-OUTDOOR

WATERHOG™ ECO GRAND ELITE

one end: Product No. 2243 two ends: Product No. 2244



- Earth friendly 30 oz/sq yd 100% post consumer recycled PET fabric reclaimed from plastic drink bottles
- SBR rubber backing contains 20% recycled rubber from car tires
- 3/8" thick bi-level surface effectively removes and stores dirt and moisture beneath shoe level between cleanings
- Rubber reinforced face nubs prevent pile from crushing, extending the performance life of the product
- Unique "Water Dam" allows the Waterhog mat to hold up to 1½ gallons of water per square yard; water and dirt stay on the mat
- Anti-Static and certified slip resistant by National Floor Safety Institute
- Available with cleated backing for placement on carpet or smooth backing for hard floor surfaces
- Recommended for commercial buildings, hotels, restaurants, healthcare facilities, office buildings and more

SIZES

ONE END	TWO ENDS
3' x 5.5'	3' x 7.1'
3' x 10'	3' x 11.7'
3' x 13.9'	3' x 15.5'
3' x 17.7'	3' x 19.4'
3' x 21.6'	3' x 23.2'
4' x 5.9'	4' x 8'
4' x 10.5'	4' x 12.6'
4' x 14.4'	4' x 16.5'
4' x 18.2'	4' x 20.3'
4' x 22'	6' x 10.1'
6' x 7'	6' x 14.8'
6' x 11.6'	6' x 18.6'
6' x 15.4'	6' x 22.4'
6' x 19.3'	
6' x 23.1'	

Sizes are approximate. Additional sizes up to 67.5' long. See price list for all additional sizes.



170 black smoke

171 indigo

172 southern pine

173 grey ash

174 maroon

175 chestnut brown

176 khaki

177 regal red





one end
maroon



Half Oval
southern pine



two ends
chestnut brown



WATERHOG™ ECO GRAND PREMIER

half oval: No. 2246 one end: No. 22248 two ends: No. 2249

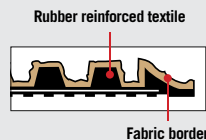
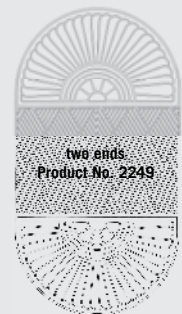
- Earth friendly 30 oz/sq yd 100% post consumer recycled PET fabric reclaimed from plastic drink bottles
- SBR rubber backing contains 20% recycled rubber from car tires
- 3/8" thick bi-level surface effectively removes and stores dirt and moisture beneath shoe level between cleanings
- Rubber reinforced face nubs prevent pile from crushing, extending the performance life of the product
- Unique "Water Dam" allows the Waterhog mat to hold up to 1½ gallons of water per square yard; water and dirt stay on the mat
- Anti-Static and certified slip resistant by National Floor Safety Institute
- Available with cleated backing for placement on carpet or smooth backing for hard floor surfaces
- Recommended for commercial buildings, hotels, restaurants, healthcare facilities, office buildings and more

SIZES

HALF OVAL	TWO ENDS
3' x 1.8'	3' x 7.1'
4' x 2.3'	3' x 11.7'
6' x 3.3'	3' x 15.5'
	3' x 19.4'
ONE END	3' x 23.2'
3' x 5.5'	4' x 8'
3' x 10'	4' x 12.6'
3' x 13.9'	4' x 16.5'
3' x 17.7'	4' x 20.3'
3' x 21.6'	6' x 10.1'
4' x 5.9'	6' x 14.8'
4' x 10.5'	6' x 18.6'
4' x 14.4'	6' x 22.4'
4' x 18.2'	
4' x 22'	
6' x 7'	
6' x 11.6'	
6' x 15.4'	
6' x 19.3'	
6' x 23.1'	

Sizes are approximate.
Additional sizes up to
67.5' long. See price list
for all additional sizes.

ENTRANCE/SCRAPER-WIPER/INDOOR-OUTDOOR



regal red



170 black smoke

171 indigo

172 southern pine

173 grey ash

174 maroon

175 chestnut brown

176 khaki

177 regal red





half oval
bordeaux



two ends
evergreen



one end
medium grey



WATERHOG™ GRAND CLASSIC

half oval: No. 272 one end: No. 273 two ends: No. 274

ENTRANCE/SCRAPER-WIPER/INDOOR-OUTDOOR



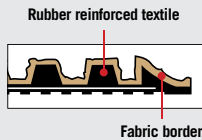
half oval
Product No. 272



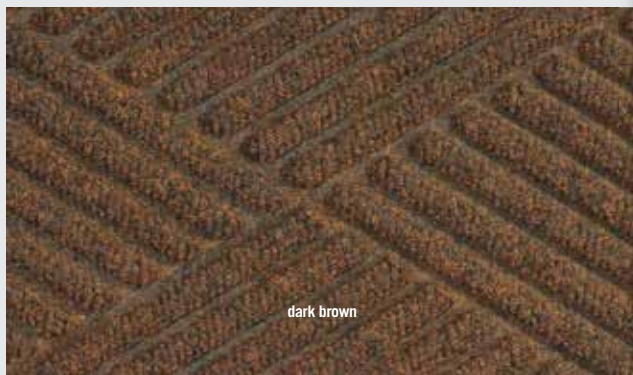
one end
Product No. 273



two ends
Product No. 274



Fabric border



dark brown

- 24 oz./yd. Polypropylene fiber system dries quickly and won't fade or rot
- Green friendly rubber backing has 20% recycled rubber content
- Exclusive rubber-reinforced face pattern prevents pile from crushing, extending performance life
- 3/8" thick unique ridged construction effectively removes and holds dirt & moisture below shoe level
- Exclusive "Water Dam" border allows Waterhog to trap dirt and water
- Available with cleated backing for placement on carpet or smooth backing for hard floor surfaces
- Anti-Static and certified slip-resistant by the National Floor Safety Institute
- Recommended for commercial buildings, hotels, restaurants, healthcare facilities, office buildings and more

SIZES

HALF OVAL	TWO ENDS
3' x 1.8'	3' x 7'
4' x 2.3'	3' x 11.7'
6' x 3.3'	3' x 15.5'
ONE END	3' x 19.4'
3' x 5.5'	3' x 23.2'
3' x 10'	4' x 8'
3' x 13.9'	4' x 12.6'
3' x 17.7'	4' x 16.5'
3' x 21.6'	4' x 20.3'
4' x 5.9'	6' x 10.1'
4' x 10.5'	6' x 14.8'
4' x 14.4'	6' x 18.6'
4' x 18.2'	6' x 22.4'
4' x 22'	
6' x 7'	
6' x 11.6'	
6' x 15.4'	
6' x 19.3'	
6' x 23.1'	

Sizes are approximate.
Additional sizes up to
67.5' long. See price list
for all additional sizes.



150 camel 151 medium brown 152 dark brown 153 light green* 154 charcoal 155 red/black 156 medium blue 157 medium grey 158 bluestone 159 evergreen



160 bordeaux 161 navy 162 white* 163 aquamarine* 164 gold* 165 solid red* 166 yellow* 167 orange* 168 purple*

*These colors are ONLY available in 3' and 4' widths.



WATERHOG™ ECO ELITE

Product No. 2240

WATERHOG™ ECO ELITE FASHION

Product No. 2241

- Earth friendly 30 oz/sq yd 100% post consumer recycled PET fabric reclaimed from plastic drink bottles
- SBR rubber backing contains 20% recycled rubber from car tires
- 3/8" thick bi-level surface effectively removes and stores dirt and moisture beneath shoe level between cleanings
- Rubber reinforced face nubs prevent pile from crushing, extending the performance life of the product
- Unique "Water Dam" allows the Waterhog mat to hold up to 1½ gallons of water per square yard; water and dirt stay on the mat
- Anti-Static and certified slip resistant by National Floor Safety Institute
- Available with cleated backing for placement on carpet or smooth backing for hard floor surfaces
- Recommended for commercial buildings, hotels, restaurants, healthcare facilities, office buildings and more

SIZES

2' x 3'
3' x 4'
3' x 5'
3' x 6'
3' x 8.4'
3' x 10'
3' x 12.2'
3' x 16'
3' x 20'
4' x 6'
4' x 8.4'
4' x 10'
4' x 12.2'
4' x 16'
4' x 20'
6' x 6'
6' x 8.4'
6' x 12.2'
6' x 16'
6' x 20'

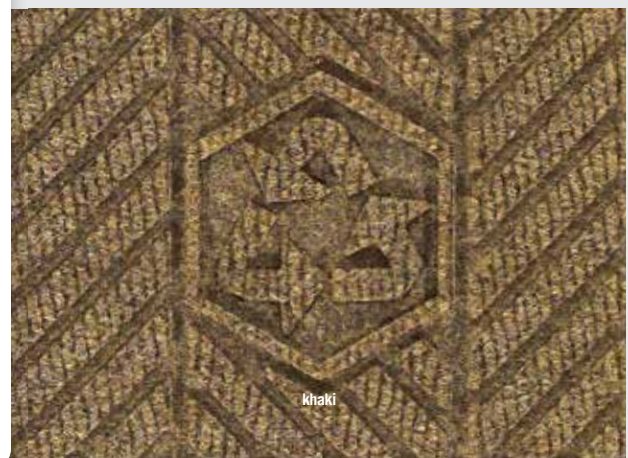
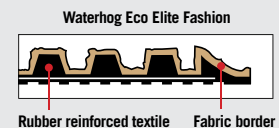
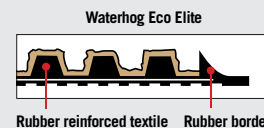
Sizes are approximate.
Additional lengths
up to 61'. See
price list for all
additional sizes.

Waterhog Eco Elite
maroon

ENTRANCE/SCRAPER-WIPER/INDOOR-OUTDOOR



Waterhog Eco Elite Fashion
southern pine



khaki



170 black smoke

171 indigo

172 southern pine

173 grey ash

174 maroon

175 chestnut brown

176 khaki

177 regal red



Waterhog Eco Premier
grey ash



WATERHOG™ ECO PREMIER

Product No. 2295

WATERHOG™ ECO PREMIER FASHION

Product No. 2297

ENTRANCE/SCRAPER-WIPER/INDOOR-OUTDOOR



Waterhog Eco Premier Fashion
southern pine

Waterhog Eco Premier

Waterhog Eco Premier Fashion



Rubber reinforced textile Rubber border



Rubber reinforced textile Fabric border



khaki

- Earth friendly 30 oz/sq yd 100% post consumer recycled PET fabric reclaimed from plastic drink bottles
- SBR rubber backing contains 20% recycled rubber from car tires
- 3/8" thick bi-level surface effectively removes and stores dirt and moisture beneath shoe level between cleanings
- Rubber reinforced face nubs prevent pile from crushing, extending the performance life of the product
- Unique "Water Dam" allows the Waterhog mat to hold up to 1½ gallons of water per square yard; water and dirt stay on the mat
- Anti-Static and certified slip resistant by National Floor Safety Institute
- Available with cleated backing for placement on carpet or smooth backing for hard floor surfaces
- Recommended for commercial buildings, hotels, restaurants, healthcare facilities, office buildings and more

SIZES

2' x 3'	4' x 10'
3' x 4'	4' x 12.2'
3' x 5'	4' x 16'
3' x 6'	4' x 20'
3' x 8.4'	6' x 6'
3' x 10'	6' x 8.4'
3' x 12.2'	6' x 12.2'
3' x 16'	6' x 16'
3' x 20'	6' x 20'
4' x 6'	
4' x 8.4'	

Sizes are approximate. Additional lengths up to 61'. See price list for all additional sizes.

170 black smoke

171 indigo

172 southern pine

173 grey ash

174 maroon

175 chestnut brown

176 khaki

177 regal red



MADE
IN THE
USA

Waterhog Fashion
evergreen



WATERHOG™ CLASSIC

Product No. 200

WATERHOG™ FASHION

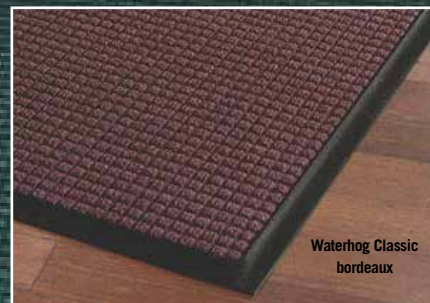
Product No. 280

- 24 oz/sq yd solution dyed polypropylene fabric is highly stain resistant
- SBR rubber backing contains 20% recycled rubber from car tires
- 3/8" thick bi-level surface effectively removes and stores dirt and moisture beneath shoe level between cleanings
- Rubber reinforced face nubs prevent pile from crushing, extending the performance life of the product
- Unique "Water Dam" allows the Waterhog mat to hold up to 1½ gallons of water per square yard; water and dirt stay on the mat
- Anti-Static and certified slip resistant by National Floor Safety Institute
- Available with cleated backing for placement on carpet or smooth backing for hard floor surfaces
- Recommended for commercial buildings, hotels, restaurants, healthcare facilities, office buildings and more

SIZES

18" x 27" 4' x 8'
2' x 3' 4' x 10'
3' x 4' 4' x 12'
3' x 5' 4' x 16'
3' x 8' 4' x 20'
3' x 10' 6' x 8'
3' x 12' 6' x 12'
3' x 16' 6' x 16'
3' x 20' 6' x 20'
4' x 6'

Sizes are approximate.
Additional lengths up to 60'. See price list for all additional sizes.

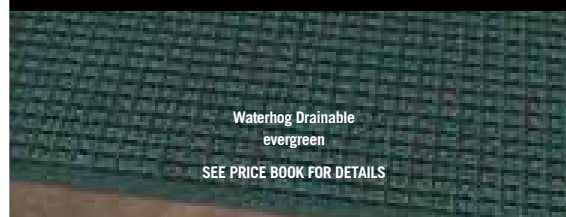


Waterhog Classic
bordeaux

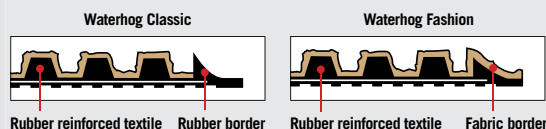
ENTRANCE/SCRAPER-WIPER/INDOOR-OUTDOOR

WATERHOG™ DRAINABLE

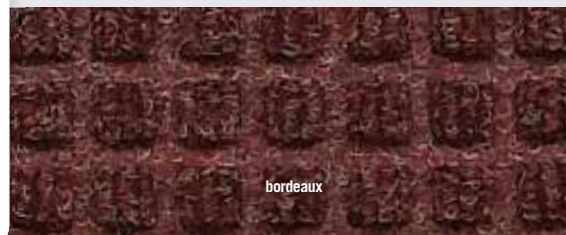
Product No. 250



Waterhog Drainable
evergreen
SEE PRICE BOOK FOR DETAILS



Waterhog Classic Waterhog Fashion
Rubber reinforced textile Rubber border Rubber reinforced textile Fabric border



bordeaux



150 camel 151 medium brown 152 dark brown 153 light green* 154 charcoal 155 red/black 156 medium blue 157 medium grey 158 bluestone 159 evergreen



160 bordeaux 161 navy 162 white* 163 aquamarine* 164 gold* 165 solid red* 166 yellow* 167 orange* 168 purple*

*These colors are available in 3' and 4' widths only.



MADE
IN THE
USA

www.andersenco.com

Waterhog Classic Diamond
red/black



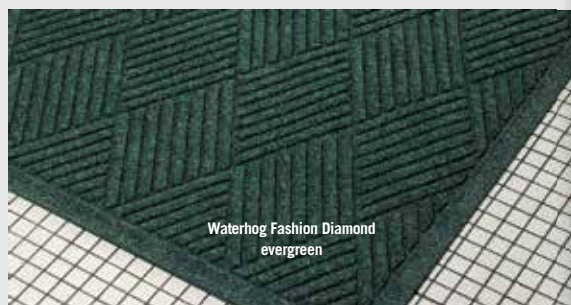
ENTRANCE/SCRAPER-WIPER/INDOOR-OUTDOOR

WATERHOG™ CLASSIC DIAMOND

Product No. 208

WATERHOG™ FASHION DIAMOND

Product No. 221



Waterhog Fashion Diamond
evergreen



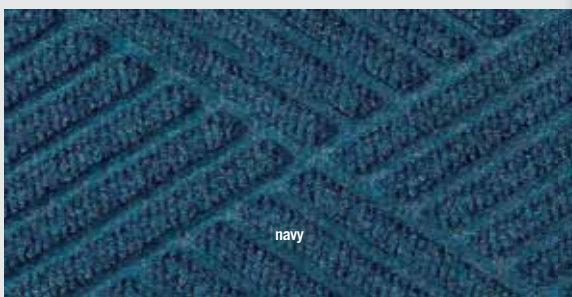
Waterhog Classic Diamond



Waterhog Fashion Diamond

Rubber reinforced textile Rubber border

Rubber reinforced textile Fabric border



navy

- 24 oz/sq yd Polypropylene fiber system dries quickly and won't fade or rot
- Green friendly rubber backing has 20% recycled rubber content
- 3/8" thick exclusive rubber-reinforced face pattern prevents pile from crushing, extending performance life
- Unique ridged construction effectively removes and holds dirt & moisture below shoe level between cleanings
- Exclusive "Water Dam" border allows Waterhog to trap dirt and water
- Available with cleated backing for placement on carpet or smooth backing for hard floor surfaces
- Certified slip-resistant by the National Floor Safety Institute
- Recommended for commercial buildings, hotels, restaurants, healthcare facilities, office buildings and more

SIZES

2' x 3'	4' x 8.4'
3' x 4'	4' x 10'
3' x 5'	4' x 12.2'
3' x 6'	4' x 16'
3' x 8.4'	4' x 20'
3' x 10'	6' x 6'
3' x 12.2'	6' x 8.4'
3' x 16'	6' x 12.2'
3' x 20'	6' x 16'
4' x 6'	6' x 20'

Sizes are approximate. Additional lengths up to 61'. See price list for all additional sizes.



150 camel 151 medium brown 152 dark brown 153 light green* 154 charcoal 155 red/black 156 medium blue 157 medium grey 158 bluestone 159 evergreen



160 bordeaux 161 navy 162 white* 163 aquamarine* 164 gold* 165 solid red* 166 yellow* 167 orange* 168 purple*

*These colors are ONLY available in 3' and 4' widths.



Waterhog Eco Elite Roll Goods
maroon



WATERHOG™ ECO ELITE ROLL GOODS

Product No. 2271 and 2272*

- Environmentally friendly matting solution is made with 100% post-consumer recycled PET Polyester fiber derived from used plastic bottles
- Rubber backing contains 20% post-consumer recycled tires
- 3/8" thick permanently reinforced bi-level Waterhog construction effectively allows dirt and moisture to be filtered at the door and contained in the base of the mat, away from foot traffic
- Every square foot of a Waterhog Eco mat eliminates 4 half liter plastic bottles from the waste stream
- May be purchased pre-seamed and bordered or rolls may be purchased separately and installed on site
- Great for large entrances and custom cut applications in sizes up to 12'x 50'

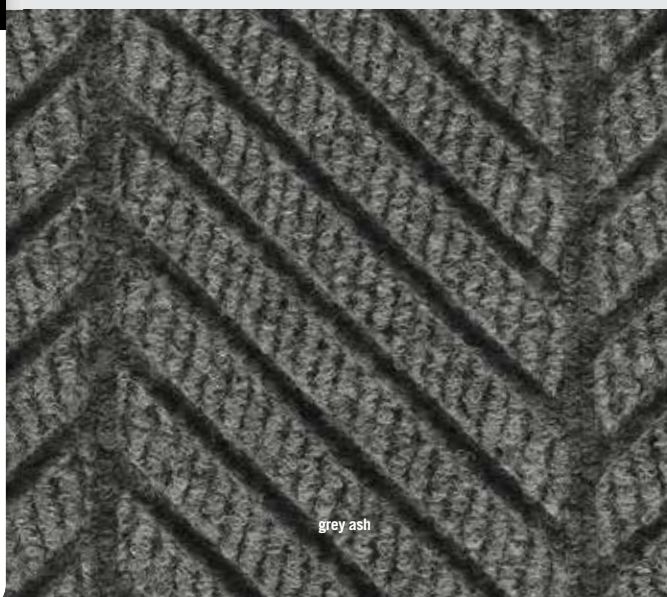
CUSTOM SIZES

See price list
for additional
information.

*ROLL SIZE

(Does not include
nosing)
6' x 67'

ENTRANCE/SCRAPER-WIPER/INDOOR-OUTDOOR



grey ash



170 black smoke

171 indigo

172 southern pine

173 grey ash

174 maroon

175 chestnut brown

176 khaki

177 regal red

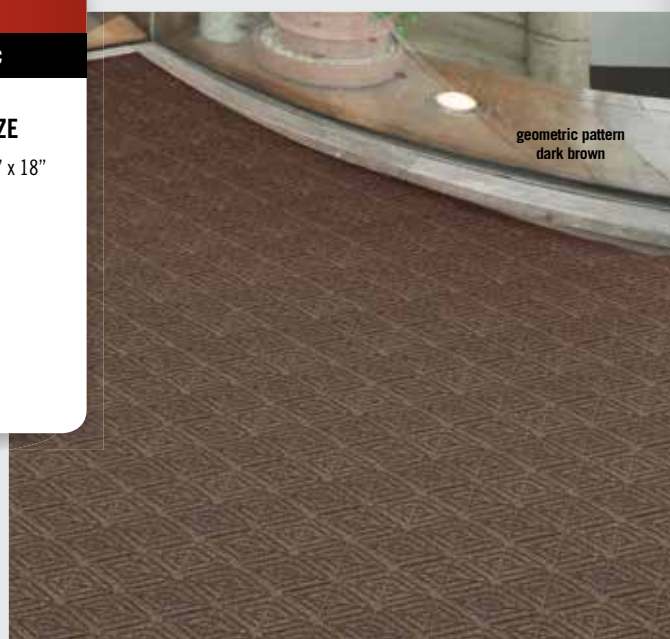
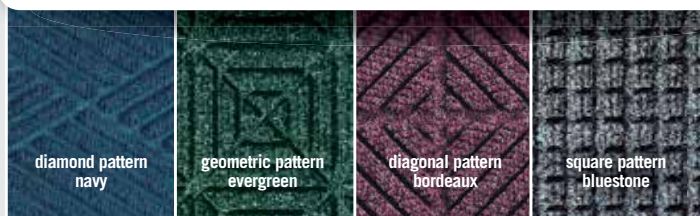


WATERHOG™ CLASSIC TILE

No. 210-square, No. 216-diamond, No. 219-diagonal, No. 220-geometric

- Offers the same outstanding cleaning performance and benefits as the Waterhog™ Classic mat
- Premium 24-ounce anti-static, 100% polypropylene fiber system with SBR rubber backing
- 18" x 18" tiles, 1/4" or 7/16" pile height
- Classic square, diamond, diagonal or geometric pattern
- Designed to be installed in high-traffic areas such as entrances, recessed mat wells, lobbies, vestibules and elevators

SIZE
18" x 18"



ENTRANCE/SCRAPER/INDOOR-OUTDOOR



SUPERSCAPE™ PARQUET TILE

Product No. 5557

- 1/4" thick molded Nitrile Rubber with 20% post consumer recycled content
- Effectively removes and stores dirt and sand beneath shoe level so it cannot enter the building
- U.V. resistant, anti-static and certified slip resistant by the National Floor Safety Institute
- Recommended for commercial buildings, grocery stores, hotels, restaurants, healthcare facilities, office buildings, and more

SIZE
18" x 18"



SUPERSCAPE™ ECO

Product No. 554

- High recycled content: 95% post consumer recycled tires. Recycled symbol is molded in the corner of the mat.
- Multi-directional molded surface pattern effectively scrapes tough dirt and grime off shoes and provides an excellent anti-slip surface
- 3/8" thickness
- Heavy weight helps keep mat in place even with cart traffic.
- Mat is equally effective when placed vertically or horizontally
- Recommended for use outside of entrances and inside applications where slip resistance is required

SIZES

2' x 3'
3' x 5'
4' x 6'

Sizes are approximate.

ENTRANCE/SCRAPER/INDOOR-OUTDOOR



**MADE
IN THE
USA**

ENTRANCE/SCRAPER/INDOOR-OUTDOOR



SUPERSCAPE™

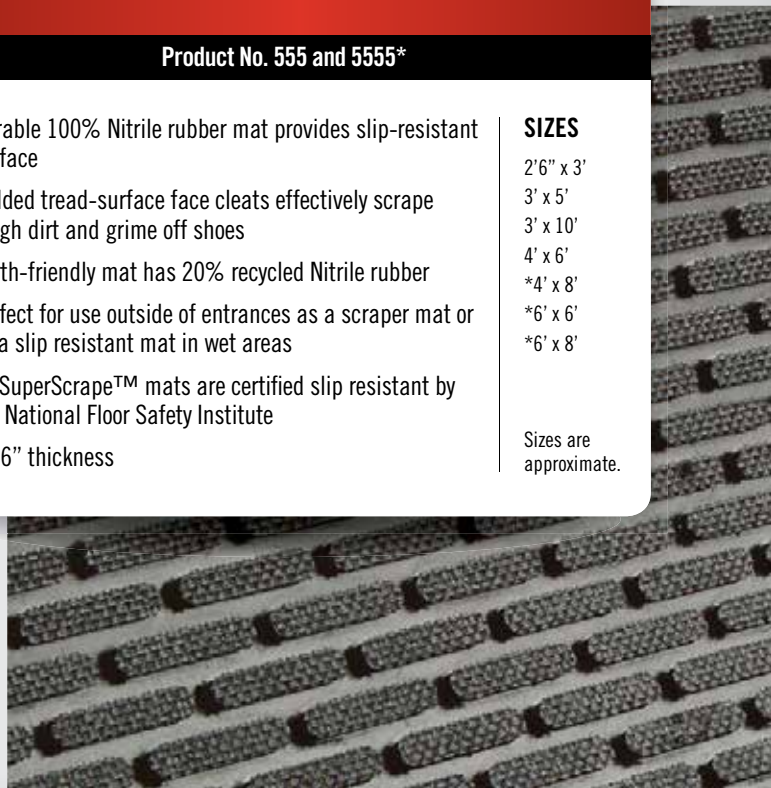
Product No. 555 and 5555*

- Durable 100% Nitrile rubber mat provides slip-resistant surface
- Molded tread-surface face cleats effectively scrape tough dirt and grime off shoes
- Earth-friendly mat has 20% recycled Nitrile rubber
- Perfect for use outside of entrances as a scraper mat or as a slip resistant mat in wet areas
- All SuperScape™ mats are certified slip resistant by the National Floor Safety Institute
- 3/16" thickness

SIZES

2'6" x 3'
3' x 5'
3' x 10'
4' x 6'
*4' x 8'
*6' x 6'
*6' x 8'

Sizes are approximate.



**MADE
IN THE
USA**



grey ash



ENTRANCE/SCRAPER-WIPER/INDOOR-OUTDOOR

ECO SELECT

Product No. 20296



chestnut brown

- Earth friendly 30 oz/sq yd 100% post consumer recycled PET fabric reclaimed from plastic drink bottles
- Backing is made of 100% crumb rubber from recycled tires
- Environmentally friendly with a total post-consumer recycled content of 96%
- 3/8" thick bi-level surface effectively removes and stores dirt and moisture beneath shoe level until cleaning
- Rubber reinforced face nubs prevent pile from crushing, extending the performance life of the product
- Recommended for commercial buildings, hotels, restaurants, healthcare facilities, office buildings and more

SIZES

2' x 3'
3' x 5'
4' x 6'

Sizes are approximate.



170 black smoke

173 grey ash

174 maroon

175 chestnut brown

SCRAPER-WIPER/INDOOR



the andersen company

WATERHOG™ DIAMONDCORD

Product No. 296

- 3/8" thick, 26 oz Corduroy berber look offers the ultimate in aesthetic appeal
- Manufactured with a permanent rubber reinforced bi-level face that minimizes crushing to provide dirt and moisture collection
- Thick and fine Polypropylene fibers wipe and scrape at the same time
- Rubber backing is 20% post-consumer recycled tire content
- Rubber water dam border keeps moisture and dirt from migrating off the mat
- Cleated backing (standard) for carpeted floors or optional smooth back for hard floors
- Ideal choice for medium traffic placements

SIZES

2' x 3'
3' x 4'
3' x 5'
3' x 6'
3' x 8.4'
3' x 10'
4' x 6'
4' x 8.4'
4' x 10'
6' x 6'
6' x 8.4'

Sizes are approximate. Additional lengths up to 61'. See price list for all additional sizes.



180 charcoal cord

181 green cord

182 grey cord

183 brown cord

the andersen company

WATERHOG™ MASTERPIECE SELECT

Product No. 265

- Construction provides a rubber reinforced bi-level surface for long-term service
- 3/8" thick, 28 oz Polypropylene face and a SBR rubber backing with 20% post-consumer recycled tire content
- Rubber water dam border keeps moisture and dirt from migrating off the mat
- Cleated backing (standard) for carpet floors or optional smooth back for hard floors
- Ideal choice for medium traffic placements

SIZES

2' x 3' 4' x 6'
3' x 4' 4' x 8'
3' x 5' 4' x 10'
3' x 8' 6' x 8'
3' x 10'

Sizes are approximate. Additional lengths up to 61'. See price list for all additional sizes.



SCRAPER-WIPER/INDOOR



230 ocean wave

231 nutmeg

232 mauve



233 pewter

234 smoky teal

235 thunderstorm

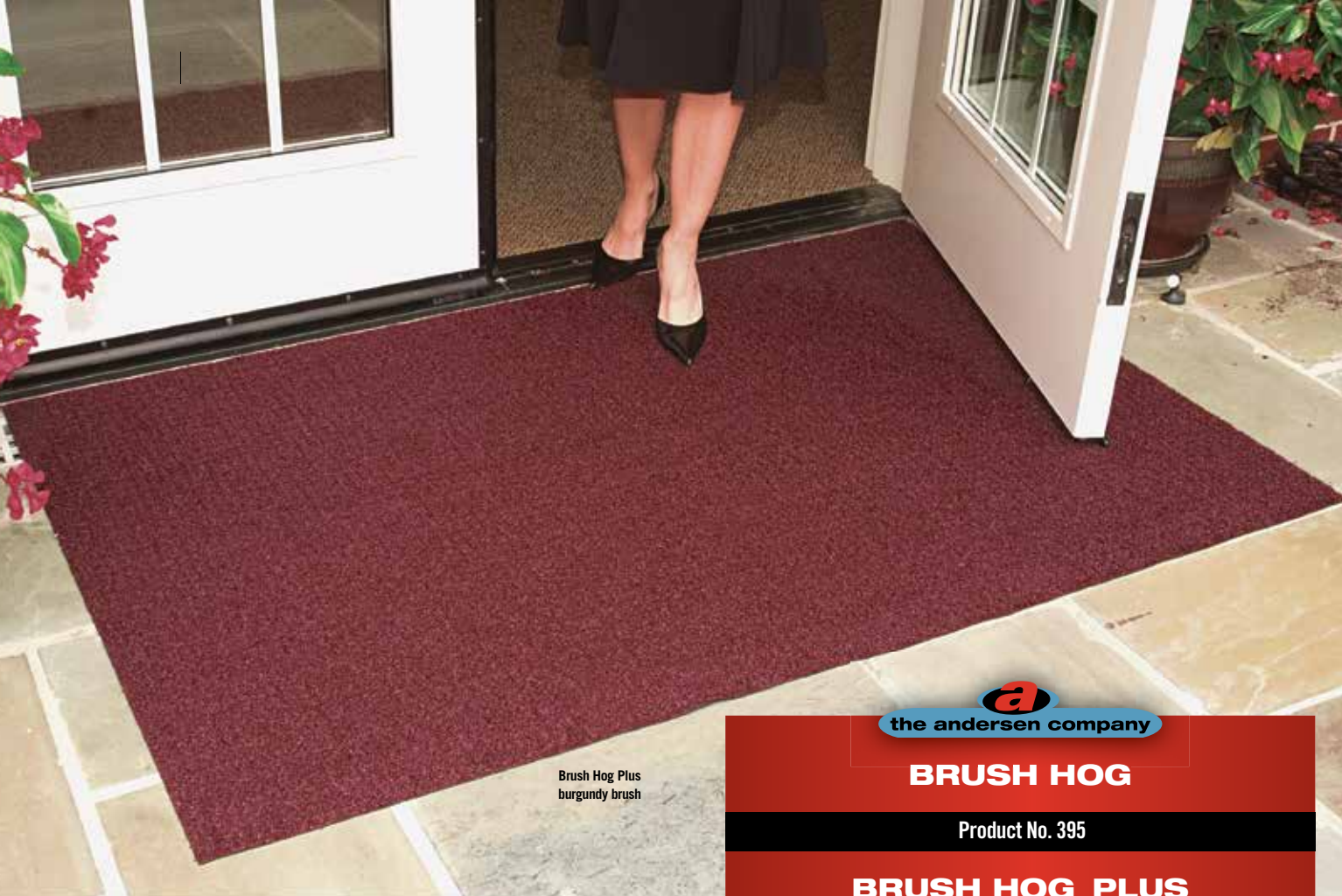
100%
customer satisfaction
GUARANTEED

NFSI
HIGH-TRACTION



**MADE
IN THE
USA**

www.andersenco.com



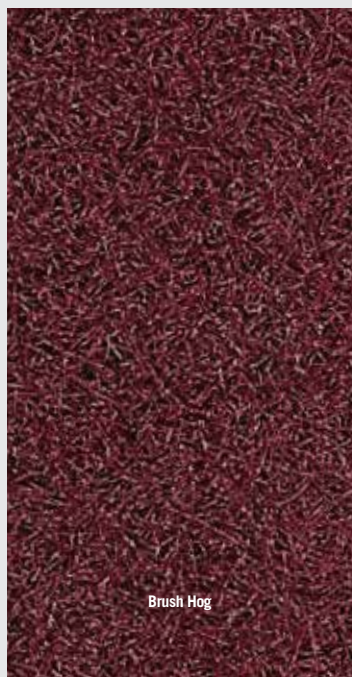
BRUSH HOG

Product No. 395

BRUSH HOG PLUS

Product No. 385

ENTRANCE/SCRAPER/OUTDOOR



Brush Hog



Brush Hog Plus
classic square pattern w/drainable fabric borders

- 100% solution-dyed nylon face won't fade in sunlight
- Green Friendly rubber backing has 20% post consumer recycled car tire content. You may choose from Smooth or Cleated backings
- Turf pile fabric construction of both Brush Hog Plus and Brush Hog filters dirt and moisture away from the mat surface. Brush Hog Plus mats have the added feature of bi-level reinforced rubber construction for improved filtration performance
- Drainable Borders
- Recommended for outside applications for all commercial buildings
- Brush Hog and Brush Hog Plus mats are certified Slip resistant by the National Floor Safety Institute

BRUSH HOG SIZES

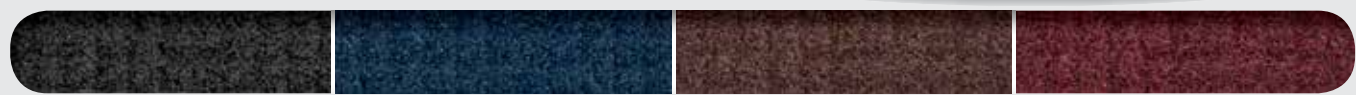
2' x 3'	4' x 8'
3' x 4'	4' x 10'
3' x 5'	4' x 12'
3' x 6'	4' x 16'
3' x 8'	4' x 20'
3' x 10'	6' x 8'
3' x 12'	6' x 12'
3' x 16'	6' x 16'
3' x 20'	6' x 20'
4' x 6'	

Additional lengths up to 61'. See price list for all additional sizes.

BRUSH HOG PLUS SIZES

2' x 3'	4' x 6'
3' x 5'	4' x 8'
3' x 10'	5.4' x 8'

Sizes are approximate.



301 charcoal brush

302 navy brush

303 brown brush

304 burgundy brush



ENTRANCE/SCRAPER/OUTDOOR

FLEX TIP™

Product No. 874

- Two thousand finger-like tips/sq. ft (21,000/m2) aggressively scrape soil from shoes
- Excellent for outdoor use
- OSHA-compliant beveled edges and deep wells hold heavy soil and debris
- Solid, 5/8" (16mm) thick construction
- Has excellent anti-fatigue capabilities
- Easily cleaned by hosing off or shaking

SIZES

24" x 32"
32" x 39"
36" x 60"
36" x 72"

Sizes are approximate.



FRONTIER

Product No. 437

- Unbacked vinyl loop scraper mat
- Filters dirt and water at the door
- Use in locker rooms, showers and around pools
- Order with or without edging
- 3/8" thick

SIZES

2' x 3' 4' x 8'
3' x 5' 3' x 60'
3' x 10' 4' x 60'
4' x 6'

Sizes are approximate.
Additional lengths up to 40' in 3' and 4' widths

ENTRANCE/SCRAPER/INDOOR-OUTDOOR



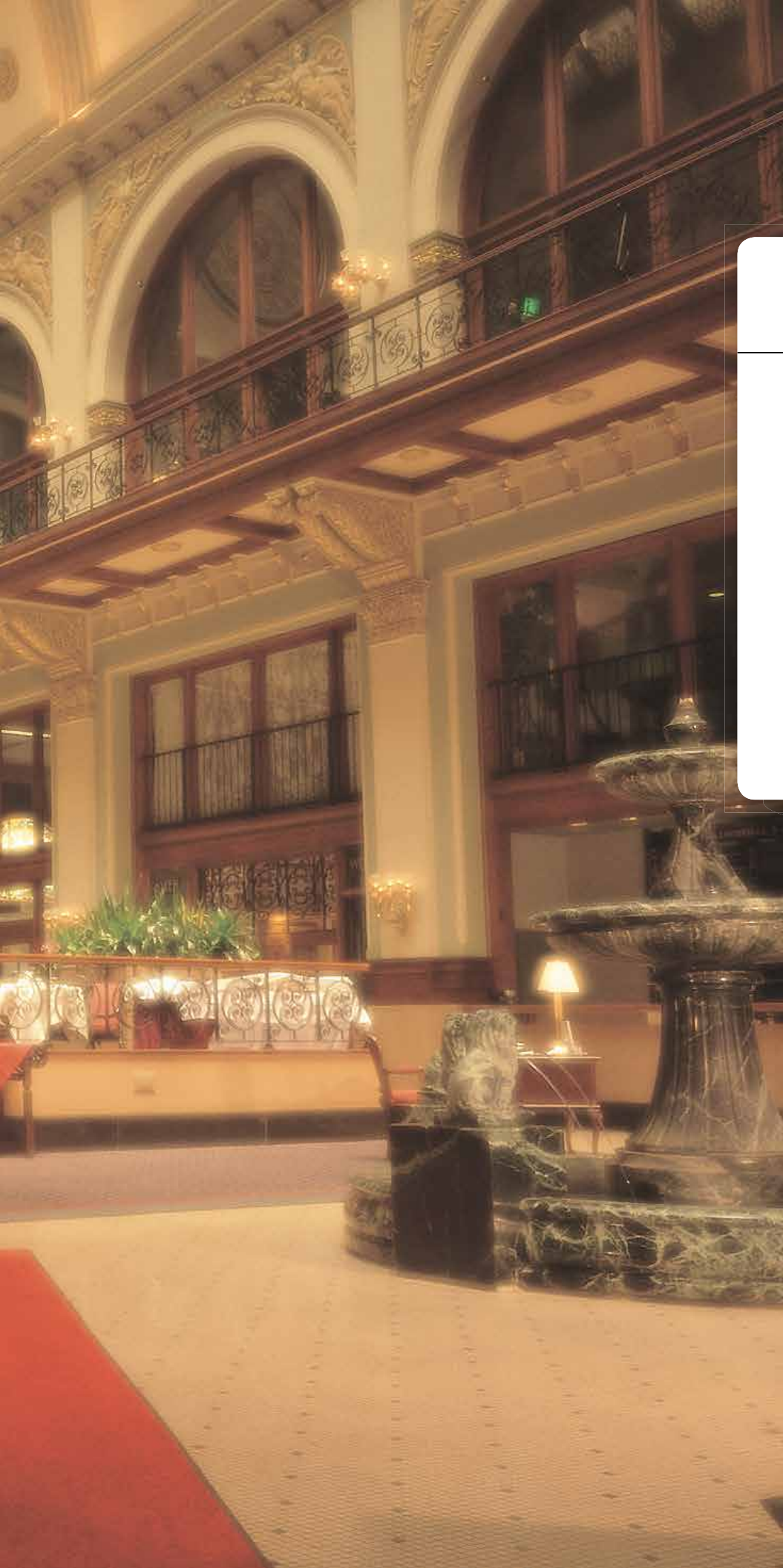
1 dark grey

2 brown

3 blue







the andersen company

INTERIOR MAT COLLECTION

ENVIRO PLUS™

TRI-GRIP™

TRI-GRIP XL™

COLORSTAR™ CRUNCH

COLORSTAR™ CRUNCH XL

COLORSTAR™ PLUSH

STYLIST

IMPRESSIONIST

VICTORY

COBBLESTONE

CLEAN STRIDE

GREASE HOG™



khaki



the andersen company

WIPER/INDOOR

ENVIRO PLUS™

Product No. 2202



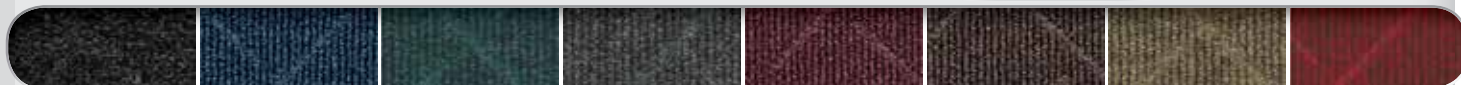
indigo

- Earth friendly 30 oz/sq yd 100% post consumer recycled PET fabric reclaimed from plastic drink bottles
- Backing is post-consumer recycled tires and EPDM (post-industrial waste rubber)
- Recycled content is 89% of total product weight (76% post-consumer, 13% post-industrial)
- Effective as a wiper mat in entryways. Also use for floor protection and spill control at water fountains, break areas, food counters, hallways, labs and more
- Anti-static. Smooth backing only.
- Recommended for commercial buildings, hotels, restaurants, healthcare facilities, office buildings and more

SIZES

2' x 3'	4' x 10'
3' x 4'	4' x 12'
3' x 5'	4' x 16'
3' x 8'	4' x 20'
3' x 10'	6' x 8'
3' x 12'	6' x 12'
3' x 16'	6' x 16'
3' x 20'	6' x 20'
4' x 6'	
4' x 8'	

Sizes are approximate. Additional lengths up to 60'. See price list for all additional sizes.



170 black smoke

171 indigo

172 southern pine

173 grey ash

174 maroon

175 chestnut brown

176 khaki

177 regal red



emerald green



TRI-GRIP™

Product No. 100

Colors 101, 102, 103, 109, 111, 113, 114, 116, 119, 121, 128, 129, 132, 141
on SBR rubber

Product No. 190

Colors 105, 125, 126, 127, 131 on SBR rubber

TRI-GRIP™ XL

Product No. 2100 on Nitrile rubber

- Heavy, 100% static dissipative nylon face offers outstanding absorption and durability
- Tight, heat-set, Ultra-Twist™ yarn construction resists packing and crushing
- Earth friendly SBR rubber backing has 20% recycled content. Resists curling and cracking.
- Also available with oil and grease resistant Nitrile rubber backing
- Available with cleated backing for placement on carpet or smooth backing for hard floor surfaces. Cleated backing available in 3', 4' and 5' widths only.
- All Tri-Grip™ mats are certified slip resistant by the National Floor Safety Institute

TRI-GRIP SIZES

2' x 3'
3' x 4'
3' x 5'
3' x 6'
3' x 8'
3' x 10'
4' x 6'
4' x 8'
4' x 10'

Additional lengths up to 40'. See price list for all additional sizes.

TRI-GRIP XL SIZES

7' - 12' widths are available in lengths up to 30'. See price list for all additional sizes. Sizes are approximate.

WIPER/INDOOR



emerald green



101 red/black** 102 browntone** 103 cabot grey** 105 dark granite** 109 chocolate* 111 grey 113 charcoal** 114 platinum* 116 navy* 119 emerald green



121 solid red* 125 midnight blue* 126 autumn brown 127 burgundy berry* 128 steel blue 129 glen green 131 stardust grey 132 suede 141 cranberry

All colors are available in 3' and 4' width

*5' widths available

**5' and 6' widths available



www.andersenco.com



WIPER/INDOOR



garment crunch

the andersen company

COLORSTAR™ CRUNCH

Product No. 110 on SBR rubber

COLORSTAR™ CRUNCH XL

Product No. 2110 on 100% Nitrile rubber backing

- Extra coarse solution-dyed nylon fibers in combination with traditional solution-dyed fibers create excellent scraping and wiping action for maximum soil stopping power
- Earth-friendly SBR rubber backing has 20% post-consumer recycled rubber content
- 3/8" thickness
- Also available with oil and grease resistant 100% Nitrile Rubber backing
- Available with cleated backing for placement on carpet or smooth backing for hard floor surfaces*

*Cleated backing available in 3', 4' and 5' widths only

COLORSTAR CRUNCH SIZES

2' x 3'
3' x 4'
3' x 5'
3' x 10'
4' x 6'
4' x 8'
4' x 10'

Additional lengths up to 40'. See price list for all additional sizes.

COLORSTAR CRUNCH XL SIZES

7'- 12' widths are available in lengths up to 30'. See price list for all additional sizes. Sizes are approximate.



280 topaz crunch



281 quartz crunch



282 onyx crunch



283 garnet crunch



284 sapphire crunch

100%
customer satisfaction
GUARANTEED

NFSI
HIGH-TRACTION



**MADE
IN THE
USA**



red pepper



COLORSTAR™ PLUSH

Product No. 180

- Heavy, 35 oz./sq. yd. nylon face creates the ultimate wiping surface
- Double thick Nitrile rubber backing keeps mat stable, even with cart traffic
- Solution dyed nylon face will not fade over time
- Available with grippers for placement on carpeted surfaces and smooth backing for hard surfaces
- Can be machine washed and dried or vacuumed and extraction cleaned
- Perfect for use in grocery stores, airports, educational facilities, Class A buildings or any high traffic entrance way

SIZES

2' x 3'
3' x 4'
3' x 10'
4' x 6'
4' x 8'

See price list for all additional sizes
Sizes are approximate.

WIPER/INDOOR



red pepper



66 black

48 brown/black

51 deeper navy

64 golden brown

67 midnight grey

76 red pepper

65 slate grey



MADE
IN THE
USA

STYLIST

Product No. 872

- An effective barrier to keep moisture, dirt and dust from being tracked inside
- Perma Dye™ yarn resists fading
- Smooth non-skid vinyl backing
- Not launderable
- Designed to release dirt easily with daily vacuuming, or can be cleaned with any commercial carpet cleaning system

SIZES

2' x 3' 3' x 10'
3' x 4' 4' x 6'
3' x 5' 4' x 8'
3' x 6' 4' x 10'
3' x 8'

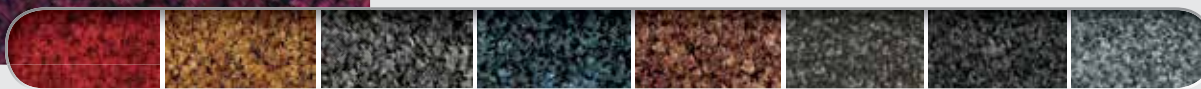
Additional lengths up to 40'. See price list for all additional sizes. Sizes are approximate.

WIPER/INDOOR



burgundy berry

burgundy berry



101 red/black***

102 browntone***

103 cabot grey***

105 dark granite***

109 chocolate*

111 gray

113 charcoal***

114 platinum*



116 navy*

119 emerald green

121 solid red*

125 midnight blue*

126 autumn brown

127 burgundy berry*

128 steel blue

129 glen green

131 stardust grey

132 suede

141 cranberry

*5' width colors

***5' & 6' width colors

WIPER/INDOOR

IMPRESSIONIST

Product No. 871

- Continuous filament olefin yarn is colorfast and resists stains
- 3/8" thickness
- Smooth non-skid vinyl backing
- Not launderable
- Designed to release dirt easily with daily vacuuming, or can be cleaned with any commercial carpet cleaning system

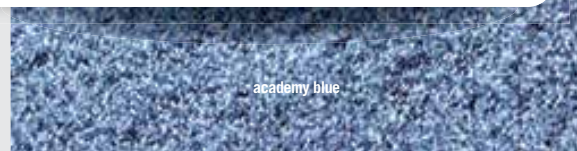
SIZES

2' x 3' 4' x 6'
3' x 4' 4' x 8'
3' x 5' 3' x 60'
3' x 6' 4' x 60'
3' x 10'

Sizes are approximate. Additional lengths up to 40'. See price list for all additional sizes. 3' and 4' in lengths up to 60'. 6' widths lengths up to 40'.



academy blue



academy blue



20 academy blue

21 burgundy

22 cardinal

23 black

24 forest green

25 navy blue

26 sable

27 salt & pepper

VICTORY

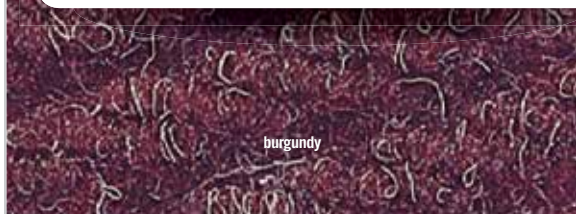
Product No. 873

- Fast drying polypropylene
- Multi-directional design is absorbent and effective for scraping off soil
- Smooth non-skid vinyl backing
- Not launderable
- Designed to release dirt easily with daily vacuuming, or can be cleaned with any commercial carpet cleaning system

SIZES

2' x 3' 4' x 6'
3' x 4' 4' x 8'
3' x 5' 3' x 60'
3' x 6' 4' x 60'
3' x 10'

Sizes are approximate.
Additional lengths up to 40'. See price list for all additional sizes. 3' and 4' in lengths up to 60'. 6' widths lengths up to 40'.



burgundy

WIPER/INDOOR



burgundy



30 blue

31 brown

32 burgundy

33 charcoal

34 green

WIPER/INDOOR



brick

COBBLESTONE

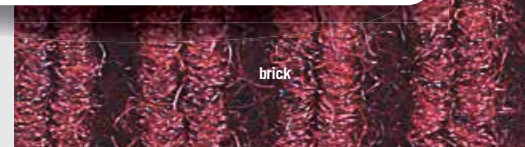
Product No. 870

- Sturdy ribbed design scrapes and traps soil within the recessed grooves
- Durable polypropylene face is effective against dust and lighter weight soil
- Smooth non-skid vinyl backing
- Not launderable
- Easily cleaned by vacuum, hose or pressure washer

SIZES

2' x 3' 4' x 6'
3' x 4' 4' x 8'
3' x 5' 3' x 60'
3' x 6' 4' x 60'
3' x 10'

Sizes are approximate.
Additional lengths up to 40'. See price list for all additional sizes. 3' and 4' in lengths up to 60'. 6' widths lengths up to 40'.



brick



10 blue

11 brick

12 brownstone

13 charcoal

14 green

15 silver

CLEAN STRIDE

frame only
frame with carpet
inserts

Product No. 410
Product No. 411
Product No. 412

- Earth-friendly SBR rubber backing has 20% recycled rubber content. Available in smooth or cleated backing.
- 3/8" thickness. Not recommended for wet areas.
- As foot traffic passes over the mat, the WaterHog™ surface scrapes larger particles while the adhesive insert captures smaller dust & dirt. With two footsteps on Clean Stride adhesive insert, over 90% of dirt particles are removed.
- Clean Stride mats provide highly effective dirt and dust removal methods for factories, computer rooms, warehouses, school gymnasiums, health care facilities and more

RUBBER FRAME SIZES

26.5" x 32"
36.5" x 46"

CARPET/ RUBBER FRAME SIZES

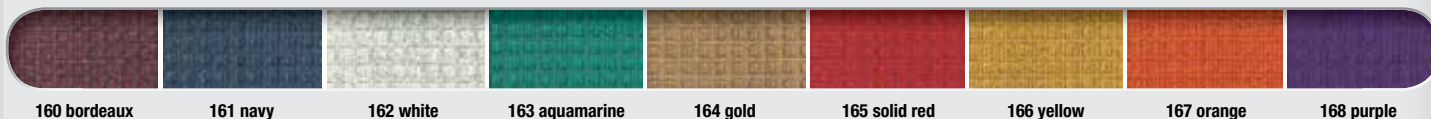
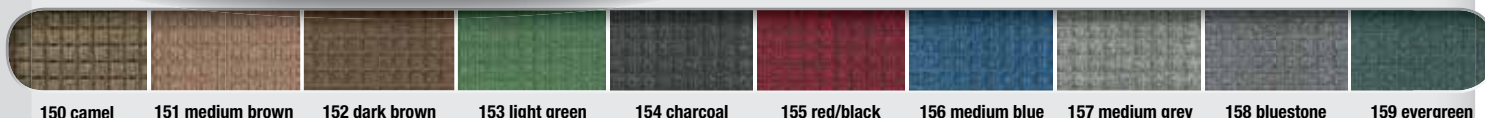
26.5" x 63.5"
36.5" x 92.5"
Clean Stride Mat
Frames **do not**
include Clean
Stride Inserts

INSERT SIZES

24" x 30"
34" x 44"

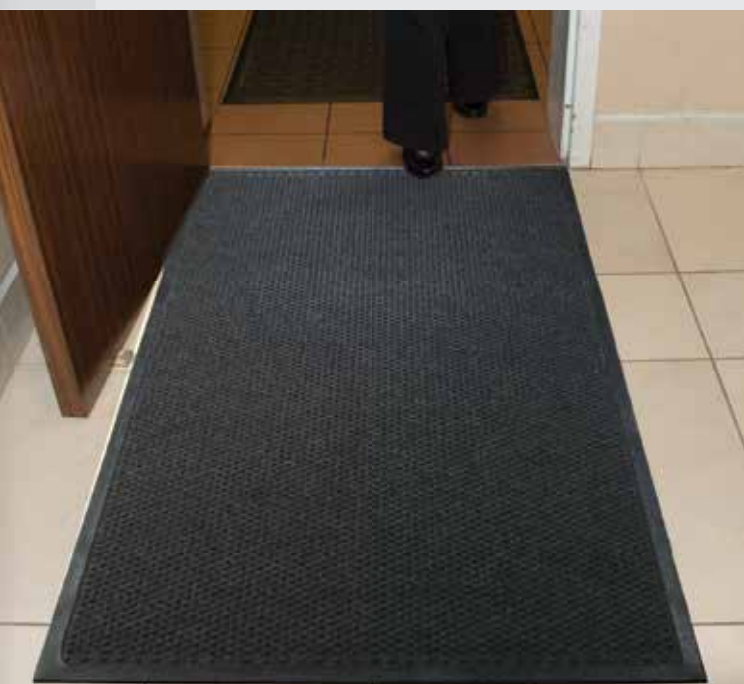
SCRAPER-WIPER/INDOOR

The Clean Stride adhesive insert is comprised of 60 layers of adhesive coated film. Each layer will perform many times before it must be peeled away. Each layer is numbered to ensure one sheet at a time removal and to indicate the number of layers remaining.



**MADE
IN THE
USA**

SCRAPER-WIPER/INDOOR



the andersen company

GREASE HOG™

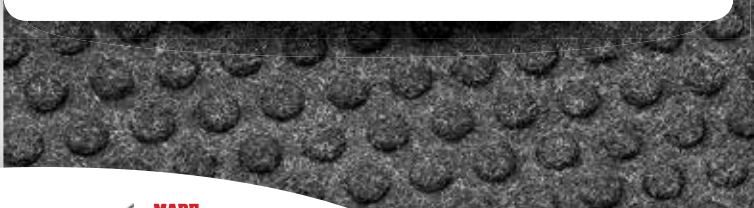
Product No. 883

- Solution-Dyed polypropylene fabric will not fade or rot
- Grease proof Nitrile rubber backing
- Permanently molded bi-level pattern on the carpet surface provides an anti-slip surface
- 1/4" thickness: easy to clean and dry
- Low profile reinforced borders allow carts to cross easily
- Unique disk pattern on back of mat keeps it in place on hard floor surfaces. Available with cleated backing for carpeted surfaces.
- Use in transitions from kitchens to dining areas and plants to office areas to stop tracked in grease and oil

SIZES

3' x 5'
3' x 10'

Sizes are
approximate.



**MADE
IN THE
USA**

the andersen company

ESD MATTING

ESD Matting is designed to quickly drain static electricity from people to help protect sensitive equipment from damage.

ESD Matting is divided into three classifications:

- 1. Electrically Conductive** is rated 10^1 to 10^5 and accepts static electricity the quickest. This is the most often used ESD matting.
- 2. Static Dissipative** is rated 10^6 to 10^9 and is the middle range of ESD matting.
- 3. Anti-Static** is rated 10^{10} to 10^{14} and accepts static the slowest.

ESD Matting is rated in ohms, or the measure of resistance. The lower the resistance, the more quickly static is accepted by the matting, i.e., the lower the exponential, the more quickly static is accepted.

Electrically Conductive Mats

HOG HEAVEN™

5/8" black border	Product No. 421
5/8" striped border	Product No. 423
7/8" black border	Product No. 422
7/8" striped border	Product No. 424

HOG HEAVEN™ II COMFORT

18" x 18" Modular Tile Comfort	No. 522
36" x 36" Modular Tile Comfort	No. 523
Linkable Mat Comfort, black border	No. 4210
Linkable Mat Comfort, yellow border	No. 4211

HAPPY FEET™

BLACK BORDER	
textured surface	Product No. 465
grip surface	Product No. 475
Linkable	
textured surface: end	Product No. 467
textured surface: middle	Product No. 469
grip surface: end	Product No. 477
grip surface: middle	Product No. 479
STRIPED BORDER	
textured surface	Product No. 466
grip surface	Product No. 476
Linkable	
textured surface: end	Product No. 468
textured surface: middle	Product No. 470
grip surface: end	Product No. 478
grip surface: middle	Product No. 480

TRACTION TREAD

Product No. 50

HOG HEAVEN, HOG HEAVEN II COMFORT

Surface to Ground	
50% Relative Humidity	12% Relative Humidity
1.7×10^4 Ohms	2.9×10^4 Ohms

Surface to Surface	
50% Relative Humidity	12% Relative Humidity
2.6×10^4 Ohms	4.9×10^4 Ohms

HAPPY FEET

Surface to Ground	
50% Relative Humidity	12% Relative Humidity
3.5×10^4 Ohms	1.6×10^5 Ohms

Surface to Surface	
50% Relative Humidity	12% Relative Humidity
6.9×10^4 Ohms	5.8×10^5 Ohms

TRACTION TREAD

Surface to Ground	
50% Relative Humidity	12% Relative Humidity
2.2×10^4 Ohms	2.5×10^4 Ohms

Surface to Surface	
50% Relative Humidity	12% Relative Humidity
5.5×10^4 Ohms	5.5×10^4 Ohms

Static Dissipative Mats

COMFORT FLOW™, COMFORT FLOW™ HD TILE

Comfort Flow	Product No. 420
Comfort Scrape	Product No. 430
Comfort Flow grit	Product No. 4200
Comfort Scrape grit	Product No. 4300
ComfortFlow HD Modular Tile	No. 4401
ComfortScrape HD Modular Tile	No. 4431
ComfortFlow HD Linkable Mats	No. 4434
ComfortScrape HD Linkable Mats	No. 4435
ComfortFlow HD Modular Tile/grit	No. 4432
ComfortScrape HD Modular Tile/grit	No. 4433
ComfortFlow HD Linkable Mats/grit	No. 4436
ComfortScrape HD Linkable Mats/grit	No. 4437

CUSHION STATION™

Without Holes	Product No. 370
With Holes	Product No. 371

CUSHION STATION™ HD MODULAR TILE

Without Holes	Product No. 375
With Holes	Product No. 376

CUSHION STATION™ HD LINKABLE MATS

Without Holes	Product No. 3370
With Holes	Product No. 3371

TRACTION TREAD SOFT

Product No. 56

HOG HEAVEN™ CONFETTI

5/8"	Product No. 443
7/8"	Product No. 444

COMFORT FLOW/SCRAPE, COMFORT FLOW HD/SCRAPE HD MODULAR TILE & LINKABLE MATS, CUSHION STATION, CUSHION STATION HD MODULAR TILE & LINKABLE MATS

Surface to Ground	
50% Relative Humidity	12% Relative Humidity
3.7×10^8 Ohms	4.5×10^8 Ohms

Surface to Surface	
50% Relative Humidity	12% Relative Humidity
9.1×10^8 Ohms	9.5×10^8 Ohms

TRACTION TREAD SOFT

Surface to Ground	
50% Relative Humidity	12% Relative Humidity
3.7×10^8 Ohms	4.5×10^8 Ohms

Surface to Surface	
50% Relative Humidity	12% Relative Humidity
9.1×10^8 Ohms	9.5×10^8 Ohms

HOG HEAVEN CONFETTI

Surface to Ground	
50% Relative Humidity	12% Relative Humidity
2.4×10^8 Ohms	2.7×10^8 Ohms

Surface to Surface	
50% Relative Humidity	12% Relative Humidity
5.8×10^8 Ohms	6.5×10^8 Ohms

Accessories

Ground Cords are used to allow static electricity to pass more efficiently to a ground and provides a controlled path. Use the cord to connect all ESD floor mats to a building ground. The terminal can be connected to an electrical outlet using the screw in the outlet cover.



Heel Grounders are made for workers wearing rubber soles and other insulating shoes. They allow static electricity to pass around the shoe into the ESD matting. Fasten the Heel Grounder to the heel of the shoe with the Velcro and allow the fabric strip to touch the sock or skin for best performance.



All New! Andersen Mat Selling Tool!

www.mobileapp.andersenco.com

Professionalize the mat selling process

- Organized facility survey program allows you to select the proper mat by mat type and style for each location with a link to the selected product literature sheet
- When survey is complete a survey spreadsheet is emailed to surveyor for final pricing information

Close more deals with...

- The video library
- Buy vs. rent cost comparison and literature to better compete with rental mat programs
- Our logo mat proof database with access to over 1,000,000 art proofs
- Email-able sales sheets selected from the Literature Library
- Easy access to all catalogs and our Suggested Retail Price List
- Product and service testimonials

Learn more about mats with...

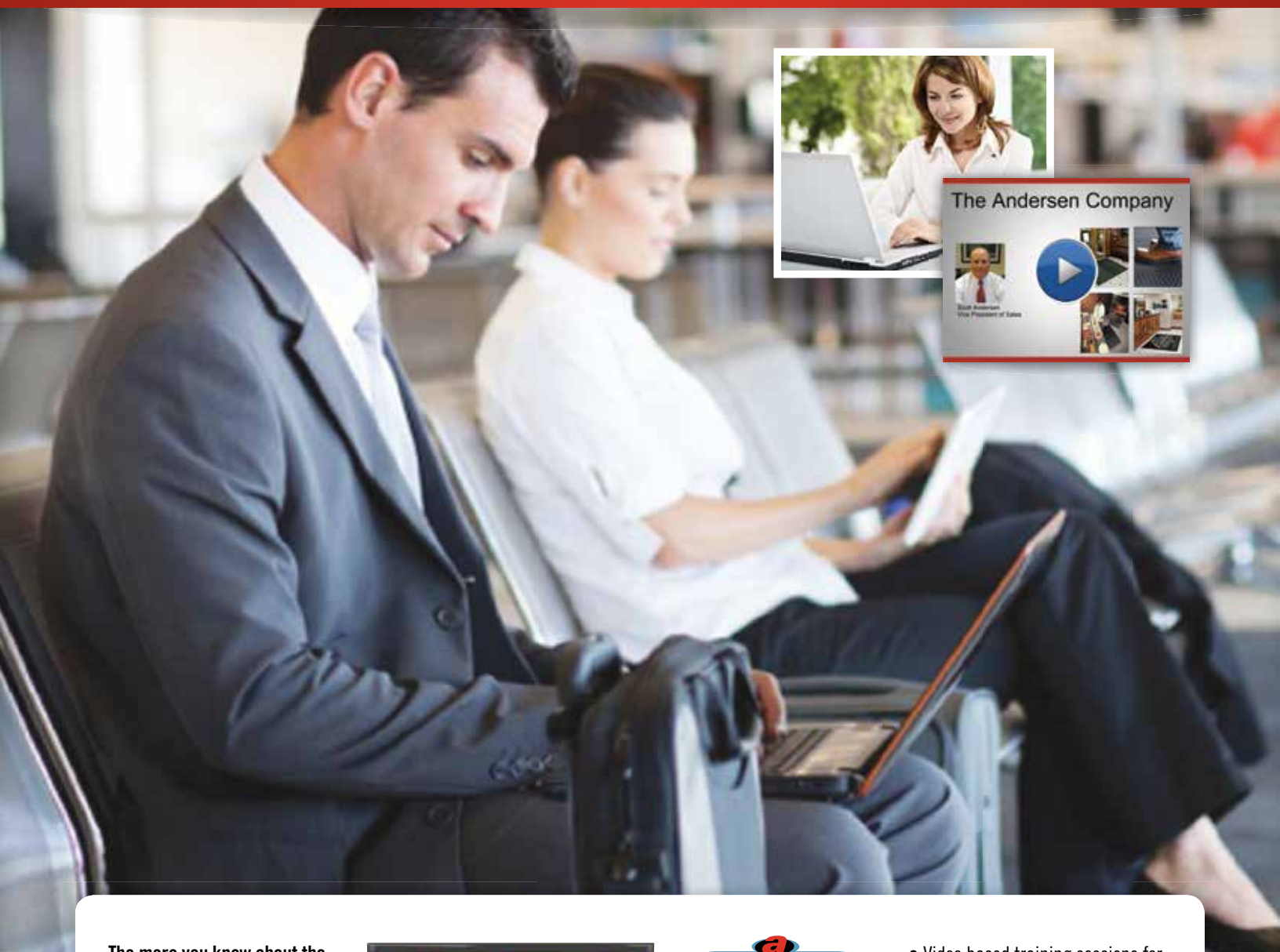
- Access to our Mat Education section
- The Green matting section

Designed for tablet and smart phone use including iPads, iPhones and Android tablets



The Andersen Company now offers **ON-DEMAND TRAINING**

Anytime, anywhere...for our distribution partners!



The more you know about the Andersen matting product line, our services and how to sell our products, the more successful you will be growing revenues for your company.

That's why Andersen developed on-demand training; so your sales representatives can be updated accurately and effectively at their convenience, 24/7! Newly hired sales staff can get up to speed quickly on the entire Andersen product line and experienced sales staff can understand the product even better, selling more confidently.



- Video based training sessions for ALL mobile devices
- Provides consistent training for all staff members.
- Accessible through the Andersen Mobile App
- Andersen can track sales team participation and test results
- Train at YOUR convenience





THE ANDERSEN COMPANY • 340 CROSS PLAINS BLVD • DALTON, GA 30721
TOLL FREE 800.241.4696 • 706.277.2551 • FAX 706.277.3170

Follow us on  facebook and  twitter