



the andersen company

ONE SOURCE FOR MATS

SCRAPER MATS

SCRAPER/WIPER MATS

WIPER MATS

ANTI-FATIGUE MATS

ANTI-FATIGUE/SLIP RESISTANT MATS

SLIP RESISTANT MATS



**GREEN MATTING SOLUTIONS
CATALOG**


CONTENTS

LEED-EBOM (V-4) & Green Cleaning	1
Green Matting Solutions.....	2
Mat Placement Guide.....	4-5
Scraper Mats.....	6
Scraper/Wiper Mats.....	7-9
Wiper Mats	10
Anti-Fatigue	11-13
Anti-Fatigue/Slip Resistant.....	14
Slip Resistant Mats.....	15
Specifications.....	16
Commitment to Green	17
Environmental Policy.....	17

SelectGREEN Mats

As a leader in the mat industry, The Andersen Company continues to develop mat products to meet the ever-changing needs of our customers. In recent years, there has been an increased interest in green cleaning programs and environmentally friendly products. To meet this need, The Andersen Company has taken a lead position in the mat market by developing over 50 mats with content including post consumer recycled rubber compounds and 100% PET post-consumer recycled fiber reclaimed from plastic drink bottles.

We recognize there is more to the Green movement than developing environmentally friendly products. Our Environmental Policy declares we believe businesses are responsible for achieving good environmental practices and operating in a sustainable manner. We are committed to reducing our environmental impact and continually improving our environmental performance as an integral part of our business strategy and operating methods. As a result of this commitment we have reduced our landfill waste 90% in the past several years and formed an internal Green Committee to manage our current environmental practices as well as to drive the development of on-going processes that will further reduce our carbon footprint.

Our SelectGreen Mat classification is designed to further help customers easily determine which Andersen mats are environmentally friendly and preferred for green cleaning programs. Simply look for the SelectGreen Mat logo () and you can be assured that you are making an environmentally smart selection for your green matting program.

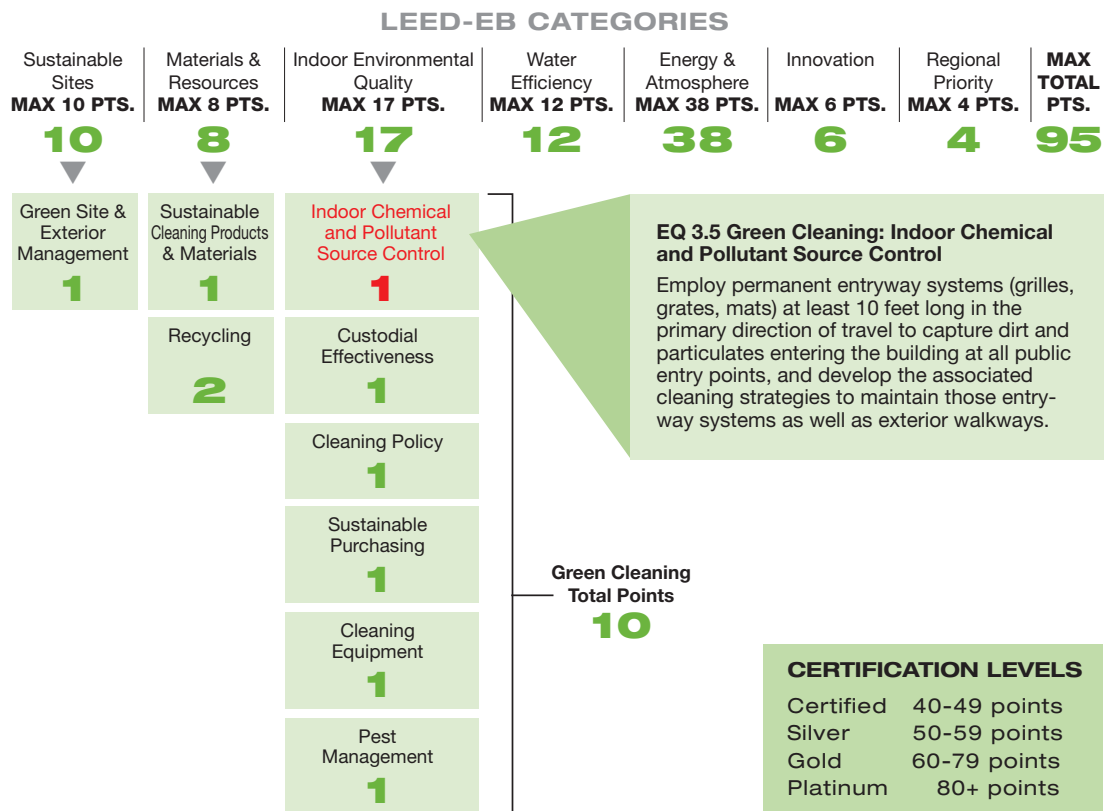


ONE SOURCE FOR MATS

LEED-EBOM (V-4) and GREEN Cleaning

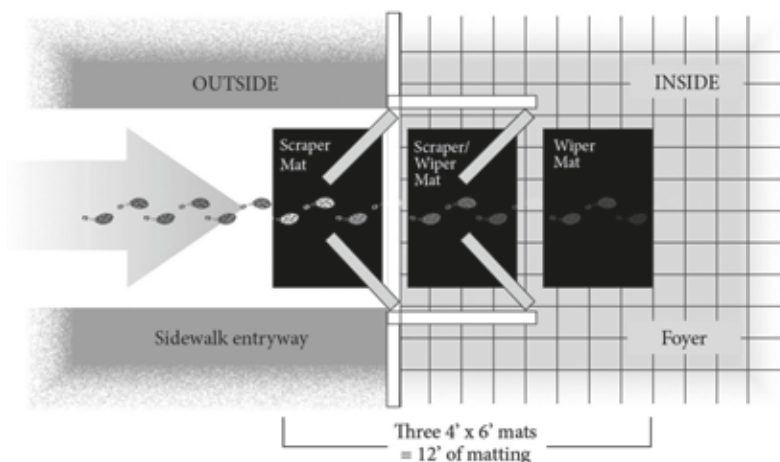


LEED-EBOM (V-4) OVERVIEW 2014



"A minimum of 10-15 feet of entrance mats provide the most effective soil management."

Carpet and Rug Institute




Green Matting Solutions FOR YOUR ENTIRE FACILITY

Your FIRST Line of Defense

PAGE 6

SCRAPER ENTRANCE MATS

Scraper mats are designed to stop mud and larger particles of dirt from being tracked inside buildings. These mats provide aggressive scraping action and trap dirt and debris in recessed areas until the mats are cleaned. Scraper mats can be used outside or inside and should be used in conjunction with a Scraper/Wiper mat and a Wiper mat.

 Super Scrape Eco



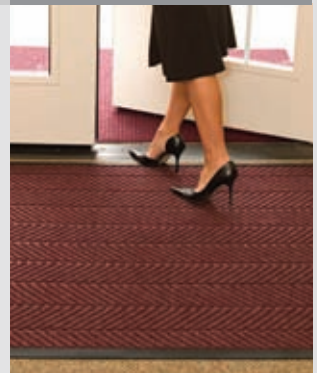
The SECOND Step for keeping dirt outside

PAGE 7-9

SCRAPER/WIPER ENTRANCE MATS

Scraper/Wiper mats are designed to provide scraping action and wiping to further stop dirt and moisture from entering a facility. These mats are typically made of tough fabrics. They channel and retain dust in recessed grooves while absorbing moisture in the fabric face. These mats are primarily used inside but may be used outside as well.

 Eco Select  Waterhog Eco Elite  Waterhog Eco Elite Fashion
 Waterhog Eco Premier Tiles  Waterhog Eco Elite Roll Goods



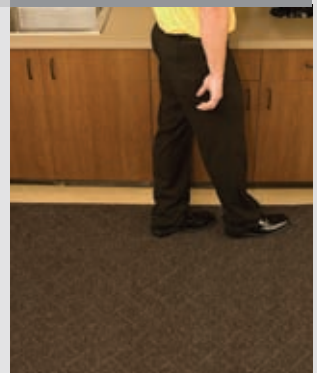
The THIRD Weapon against dirt & moisture

PAGE 10 & 11

WIPER ENTRANCE MATS

Wiper Entrance Mats are designed to stop any remaining dust and moisture left after using the Scraper mat and Scraper/Wiper mat. These mats are made with carpet facing to complement most interiors. These mats are for indoor use and when used in conjunction with a Scraper mat and Scraper/Wiper mat, they can stop as much as 70% to 80% of dirt and grime from being tracked into a building.

 Enviro Plus



Enhance Comfort & Increase Productivity

PAGE 12 & 13

ANTI-FATIGUE MATS

Anti-Fatigue mats are available in a wide range of sizes, weights and materials. It has been proven that the proper use of anti-fatigue mats can enhance worker productivity by over 20%. These mats are designed for use wherever workers spend time standing and will help to eliminate muscular skeletal disorders.

 Hog Heaven  Hog Heaven II Modular Tile Comfort  Hog Heaven Confetti
 Cushion Station  Happy Feet  Complete Comfort II  Comfort Scrape
 Comfort Scrape HD Modular Tile







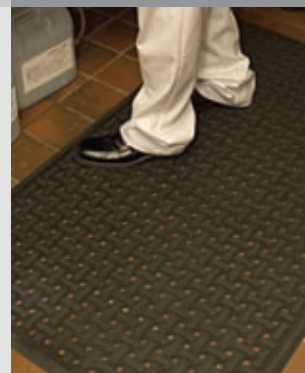
Drainable Floor Safety

PAGE 14 & 15

FLOW THROUGH MATS

Flow through mats allow liquids to pass through them to eliminate slip hazards. Anti-fatigue properties provide comfort when standing for long periods of time. The thick rubber helps alleviate stress on the legs, feet and lower back.

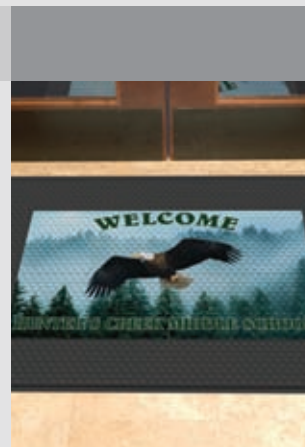
 Traction Hog II  Comfort Flow  Comfort Flow HD Modular Tile
 Cushion Station with Holes



Versatile Image Enhancement

CUSTOM LOGO MATS

Logo mats are designed to project a positive image while performing a matting function. Most types of mats, including Scraper, Scraper/Wiper, Wiper and Anti-Fatigue mats, are available with a custom logo applied to the mat. With today's technology, purchasing a logo mat is easy and affordable. There are no setup charges and you may purchase just one mat at a time. Most orders ship within 5 working days from the time of final approval. See website or full line catalog for detailed descriptions of all available logo mat styles.

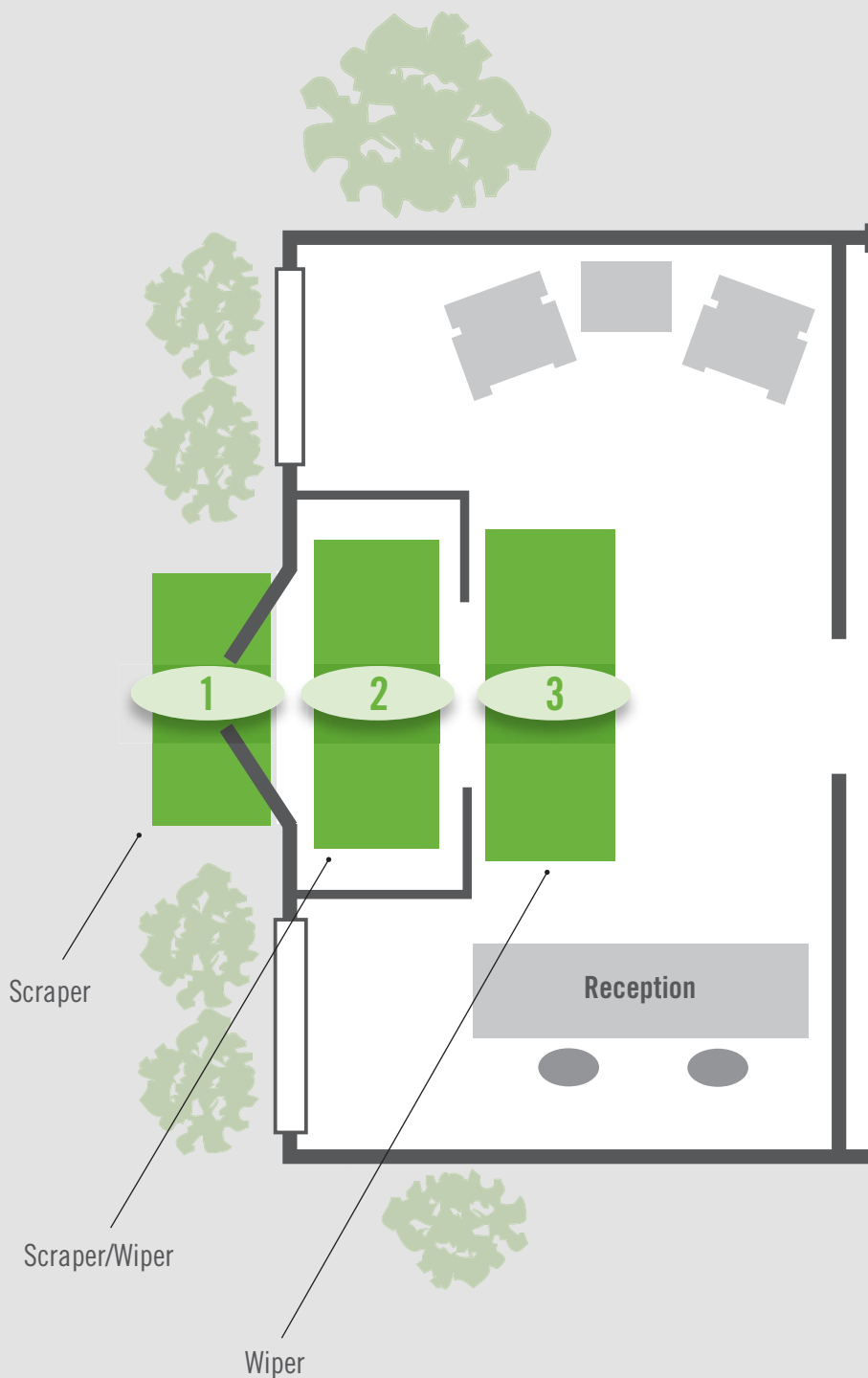


Mat Placement Guide

This easy to read Mat Placement Guide is designed to help you select the proper type of mat that best suits your needs.

When choosing a mat, keep in mind:

- Mats are the first line of defense to stop dirt and moisture from entering a building. 70% to 80% of dust, dirt and grime in a building is tracked in from outside.
- As few as 150 people entering a facility can track in one pound of dirt in a 5-day work week - costing over \$30,000 annually to remove.
- Mats improve indoor air quality and protect your facility and your bottom line.
- Mats are also useful in high traffic wear areas for spill control and other internal track off areas.
- Mats provide safety and anti-fatigue functions in factories, restaurants and other commercial facilities.
- Mats protect employees from slip and fall accidents and muscular skeletal disorders - saving employers thousands of dollars in workman compensation costs and employee down time.





FRONT DOOR TO BACK... there is a green mat solution for all your matting needs.



SUPERSCAPE ECO™

Product No. 554

SCRAPER/INDOOR-OUTDOOR



95% Post Consumer Recycled Tires

- Recycled symbol is molded in the corner of the mat
- Multi-directional molded surface pattern effectively scrapes tough dirt and grime off shoes and provides an excellent anti-slip surface
- 3/8" thickness
- Heavy weight helps keep mat in place even with cart traffic
- Mat is equally effective when placed vertically or horizontally
- Recommended for use outside of entrances and inside applications where slip resistance is required

SIZES

2' x 3'
3' x 5'
4' x 6'

Sizes are approximate.



grey ash



ECO SELECT

Product No. 20296



96% Post Consumer Recycled Content

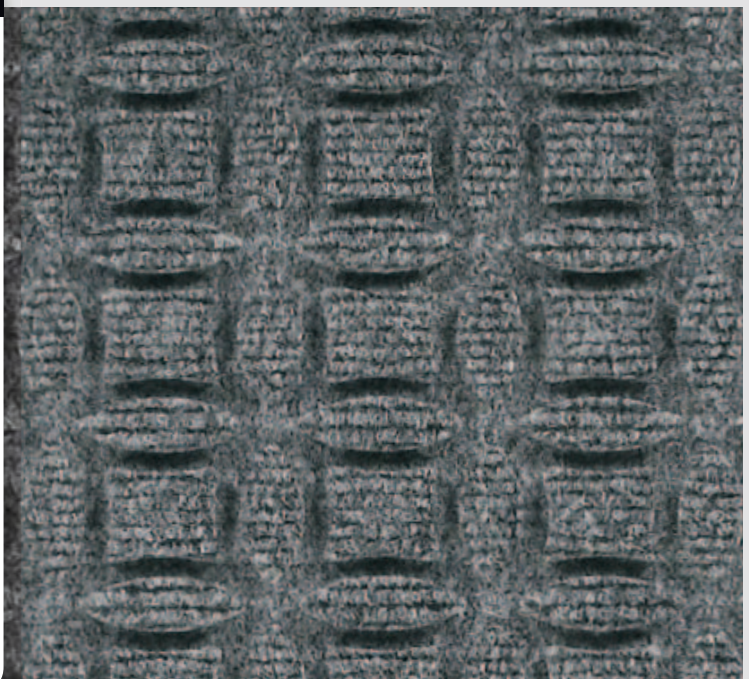
- Earth friendly 30 oz/sq yd 100% post consumer recycled PET fabric reclaimed from plastic drink bottles
- Backing is made of 100% crumb rubber from recycled tires
- Bi-level surface effectively removes and stores dirt and moisture beneath shoe level until cleaning
- Rubber reinforced face nubs prevent pile from crushing, extending the performance life of the product
- Certified slip resistant by National Floor Safety Institute
- Recommended for commercial buildings, hotels, restaurants, healthcare facilities, office buildings and more

SIZES

2' x 3'
3' x 5'
4' x 6'

Sizes are approximate.

ENTRANCE/SCRAPER-WIPER/INDOOR-OUTDOOR



170 black smoke



173 grey ash



174 maroon



175 chestnut brown



MADE
IN THE
USA



Waterhog Eco Elite
maroon



WATERHOG® ECO ELITE*

Product No. 2240

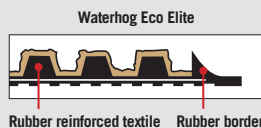
WATERHOG® ECO ELITE FASHION**

Product No. 2241

ENTRANCE/SCRAPER-WIPER/INDOOR-OUTDOOR



Waterhog Eco Elite Fashion
southern pine



Waterhog Eco Elite



Waterhog Eco Elite Fashion

Rubber reinforced textile Rubber border

Rubber reinforced textile Fabric Border



khaki

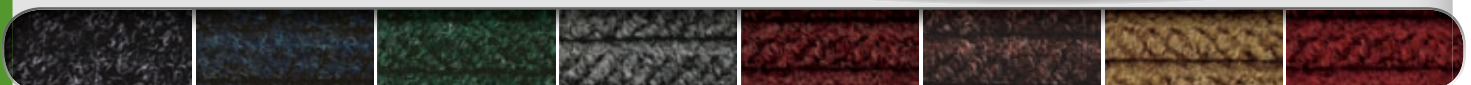
- *38.6% Post Consumer Recycled Content
- **43.3% Post Consumer Recycled Content

- Earth friendly 30 oz/sq yd 100% post consumer recycled PET fabric reclaimed from plastic drink bottles
- SBR rubber backing contains 20% recycled rubber from car tires
- 3/8" thick bi-level surface effectively removes and stores dirt and moisture beneath shoe level between cleanings
- Rubber reinforced face nubs prevent pile from crushing, extending the performance life of the product
- Unique "Water Dam" allows the Waterhog mat to hold up to 1½ gallons of water per square yard; water and dirt stay on the mat
- Anti-Static and certified slip resistant by National Floor Safety Institute
- Available with cleated backing for placement on carpet or smooth backing for hard floor surfaces
- Recommended for commercial buildings, hotels, restaurants, healthcare facilities, office buildings and more

SIZES

2' x 3'
3' x 4'
3' x 5'
3' x 6'
3' x 8.4'
3' x 10'
3' x 12.2'
3' x 16'
3' x 20'
4' x 6'
4' x 8.4'
4' x 10'
4' x 12.2'
4' x 16'
4' x 20'
6' x 6'
6' x 8.4'
6' x 12.2'
6' x 16'
6' x 20'

Sizes are approximate.
Additional lengths
up to 61'. See
price list for all
additional sizes.



170 black smoke

171 indigo

172 southern pine

173 grey ash

174 maroon

175 chestnut brown

176 khaki

177 regal red



WATERHOG® ECO PREMIER TILE

Product No. 2215 Geometric
Product No. 2217 Diagonal
Product No. 2218 Diamond

 **7/16" Thickness has 11.1% Post Consumer Recycled Content;
1/4" Thickness has 19.8% Post Consumer Recycled Content**

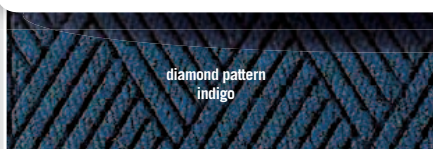
- 30 oz, 100% post-consumer recycled PET Polyester fiber derived from used plastic bottles for the face with a SBR rubber backing
- 18" x 18" tiles, 1/4" or 7/16" pile height
- Diagonal, diamond or geometric pattern. Each pattern may be special ordered with the universal recycle symbol molded into the pattern.
- Permanent rubber reinforced bi-level face will not crush. Provides years of superior dirt and moisture collection.
- Modular flexibility to handle small to large entrances

SIZE
18" x 18"

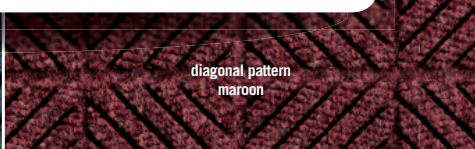
ENTRANCE/SCRAPER-WIPER/INDOOR



diamond pattern
regal red



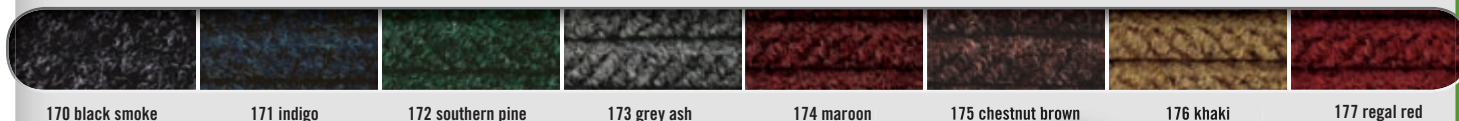
diamond pattern
indigo



diagonal pattern
maroon



geometric pattern
grey ash



170 black smoke

171 indigo

172 southern pine

173 grey ash

174 maroon

175 chestnut brown

176 khaki

177 regal red

ENTRANCE/SCRAPER-WIPER/INDOOR-OUTDOOR



Waterhog Eco Elite Roll Goods
maroon

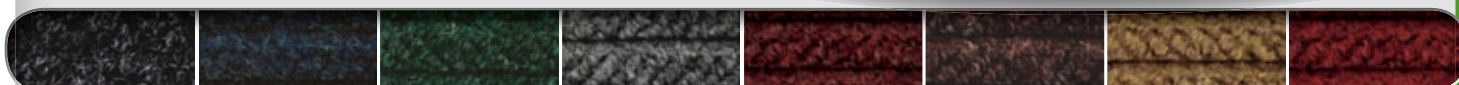
WATERHOG® ECO ELITE ROLL GOODS

Product No. 2271

 **43.3% Post Consumer Recycled Content**

- Environmentally friendly matting solution is made with 100% post-consumer recycled PET Polyester fiber derived from used plastic bottles
- Rubber backing contains 20% post-consumer recycled tires
- Every square foot of a Waterhog Eco mat eliminates 4 half liter plastic bottles from the waste stream
- 3/8" thick permanently reinforced bi-level Waterhog construction effectively allows dirt and moisture to be filtered at the door and contained in the base of the mat, away from foot traffic
- May be purchased pre-seamed and bordered or rolls may be purchased separately and installed on site
- Great for large entrances and custom cut applications in sizes up to 12'x 50'

ROLL SIZE
(Does not include nosing)
6' x 67'



170 black smoke

171 indigo

172 southern pine

173 grey ash

174 maroon

175 chestnut brown

176 khaki

177 regal red



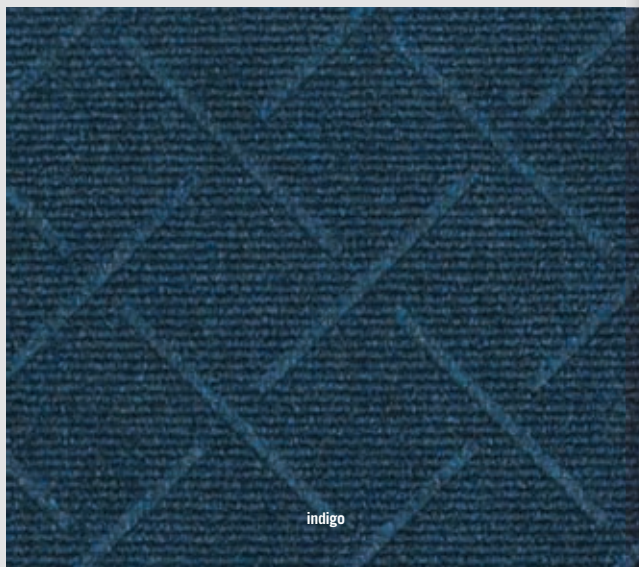
khaki



WIPER/INDOOR

ENVIRO PLUS®

Product No. 2202



indigo

76% Post Consumer and 13% Post Industrial Content (89% Total)

- Earth friendly 30 oz/sq yd 100% post consumer recycled PET fabric reclaimed from plastic drink bottles
- Backing is post-consumer recycled tires and EPDM (post-industrial waste rubber)
- Effective as a wiper mat in entryways. Also use for floor protection and spill control at water fountains, break areas, food counters, hallways, labs and more
- Anti-static. Smooth backing only.
- Recommended for commercial buildings, hotels, restaurants, healthcare facilities, office buildings and more

SIZES

2' x 3'	4' x 10'
3' x 4'	4' x 12'
3' x 5'	4' x 16'
3' x 8'	4' x 20'
3' x 10'	6' x 8'
3' x 12'	6' x 12'
3' x 16'	6' x 16'
3' x 20'	6' x 20'
4' x 6'	
4' x 8'	

Sizes are approximate. Additional lengths up to 60'. See price list for all additional sizes.



170 black smoke

171 indigo

172 southern pine

173 grey ash

174 maroon

175 chestnut brown

176 khaki

177 regal red



**MADE
IN THE
USA**

HAPPY FEET®

BLACK BORDER

Textured Surface	Product No. 465
Grip Surface	Product No. 475
Linkable	
Textured Surface: End	Product No. 467
Textured Surface: Middle	Product No. 469
Grip Surface: End	Product No. 477
Grip Surface: Middle	Product No. 479

STRIPED BORDER

Textured Surface	Product No. 466
Grip Surface	Product No. 476
Linkable	
Textured Surface: End	Product No. 468
Textured Surface: Middle	Product No. 470
Grip Surface: End	Product No. 478
Grip Surface: Middle	Product No. 480

9.8% Post Consumer Recycled Rubber Content

- Earth friendly, Nitrile rubber has 20% recycled content
- Constructed with a dense cushion encapsulated within oil/grease proof Nitrile rubber
- Static dissipative. Safe for use in computer rooms and electrical part manufacturing areas.
- Certified slip resistant by the National Floor Safety Institute
- Cleated back to minimize movement and maximize safety. Additional safety is provided by low profile, beveled borders. Will not curl or crack.
- Available with OSHA approved striped borders
- Welding safe
- Available in 2 surface types...
Textured Surface: For dry/damp areas where traction is unnecessary. Grip Surface: For wet areas where maximum traction and/or scraping is needed.

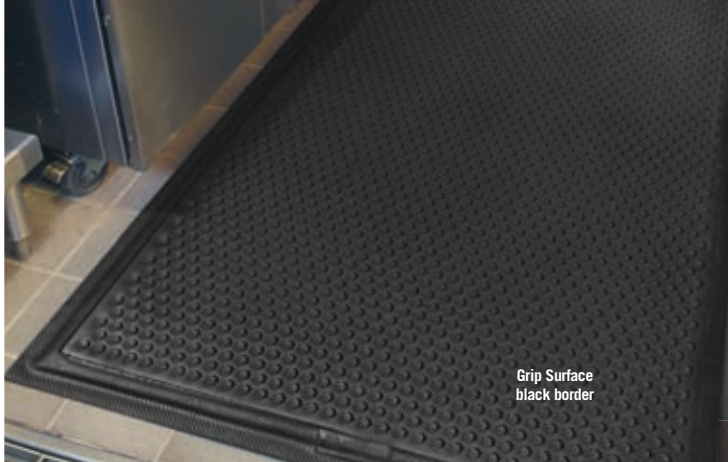
SIZES

2' x 3'
3' x 5'

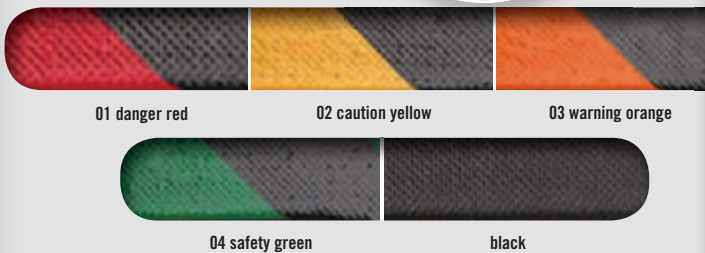
LINKABLE SIZES

3' x 5' end
3' x 5' middle

Sizes are approximate.



ANTI-FATIGUE/DRY OR WET ENVIRONMENTS/INDOOR



ANTI-FATIGUE/INDOOR-OUTDOOR

COMPLETE COMFORT™ II

Product No. 594

14% Post Consumer Recycled Rubber Content

- High Density Closed Cell Nitrile Rubber Cushion has 15% recycled content
- Grease and oil proof, chemical resistant
- Welding safe and static dissipative
- Beveled edges for safe transition from mat to floor
- Lifetime anti-microbial treatment to prevent odors and degradation
- Certified slip resistant by the National Floor Safety Institute
- Recommended for use in wet or dry environments for healthcare, foodservice and industrial applications

SIZES

2' x 3'
3' x 4'
3' x 5'
4' x 6'

Sizes are approximate.



HOG HEAVEN®

5/8" Black Border
5/8" Striped Border
7/8" Black Border
7/8" Striped Border

Product No. 421
Product No. 423
Product No. 422
Product No. 424

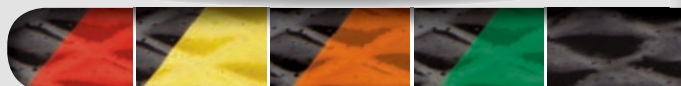
16.5% (5/8") and 14.8% (7/8") Post Consumer Recycled Rubber Content

- Nitrile rubber top surface has 20% recycled content
- Closed cell Nitrile rubber cushion is permanently molded (not glued) to the Nitrile rubber top surface
- Rubber borders will not crack or curl
- Chemical Resistant, Grease & Oil Proof
- Static Dissipative and certified slip resistant by the National Floor Safety Institute
- Welding Safe
- Borders are beveled and are available with OSHA approved colors: yellow, orange, green or red
- Recommended for distribution, manufacturing and retail facilities for picking lines, assembly lines, work stations, check-out stations and more

SIZES

2' x 3'
3' x 5'
3' x 12'
4' x 6'
4.8' x 8'
Additional lengths up to 60'.
See price list for all additional sizes.

Sizes are approximate.

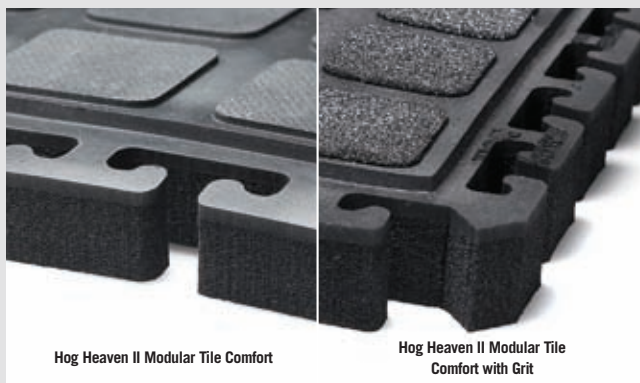


01 danger red 02 caution yellow 03 warning orange 04 safety green black

ANTI-FATIGUE / DRY ENVIRONMENTS



Hog Heaven II Modular Tile Comfort yellow border



Hog Heaven II Modular Tile Comfort

Hog Heaven II Modular Tile Comfort with Grit

ANTI-FATIGUE/DRY OR WET ENVIRONMENTS/INDOOR



Hog Heaven Yellow Striped Border

HOG HEAVEN™ II MODULAR TILE COMFORT & HOG HEAVEN™ II LINKABLE MATS COMFORT

18" - Product No. 522; 36" - Product No. 523
Linkable Black Border - Product No. 4210
Linkable Yellow Border - Product No. 4211

11.8% Post Consumer Recycled Rubber Content

- Outstanding anti-fatigue qualities for dry areas
- Solid 20% recycled Nitrile Rubber top surface has excellent chemical and oil resistance
- Closed cell Nitrile Rubber cushion provides long lasting comfort
- Welding safe
- Nitrile Rubber surface is molded to the cushion backing (not glued) so the surface will not delaminate
- Rubber surface remains flexible for the life of the product and will not curl or crack
- Borders available in black or yellow striped
- Electrically conductive and certified slip resistant by the National Floor Safety Institute
- Recommended for distribution, manufacturing and retail facilities for picking lines, assembly lines, work stations, check-out stations and more

MODULAR TILE SIZES

Middle:
18" x 18" x 3/4"
Side:
18" x 21.875"
x 3/4"
Corner:
21.875" x 21.875"
x 3/4"

LINKABLE SIZES

Mat End:
39.875 x 43.75"
Mat Middle:
36" x 43.75"

with GRIT

18" w/Grit - Product No. 524; 36" w/Grit - Product No. 525
Linkable Black Border w/Grit - Product No. 4212
Linkable Yellow Border w/Grit - Product No. 4213

- Same features as above, but with an added aggressive silicon carbide anti-slip top surface

ANTI-FATIGUE/INDOOR



12 grey

a
the andersen company

HOG HEAVEN® CONFETTI

5/8"
7/8"

Product No. 443
Product No. 444



54.5% (5/8") and 51.9% (7/8") Post Consumer Recycled Rubber Content

- Earth-friendly 95% recycled post-consumer rubber car tire top surface
- Closed-cell Nitrile rubber cushion backing provides long-lasting comfort without breaking down
- Beveled edges and curved corners create a safer transition from mat to floor
- Welding safe
- Static dissipative construction makes these mats ideal for industrial, commercial, retail, hospitality, and health care applications

SIZES

2' x 3'
3' x 5'
3' x 12'
Additional lengths up to to 60'. See price list for all additional sizes.

Sizes are approximate.



a
the andersen company

CUSHION STATION™

without holes
with holes

Product No. 370
Product No. 371



14.4% Post Consumer Recycled Rubber Content

- Highly durable closed-cell Nitrile rubber cushion combined with uniquely designed construction affords excellent anti-fatigue properties
- Grease and oil proof
- Static dissipative, welding safe
- Designed for use in wet or dry areas. Available with and without holes
- Anti-microbial treated for lifetime protection against odors and degradation
- 7/16" thick; available in standard sizes up to 20' long
- Flexible Nitrile cushion construction can be cleaned easily
- May be Autoclave sterilized
- Ideal for use in machine shops, work stations or other heavy industrial applications, medical facility environments (i.e., operating rooms, delivery rooms, etc.) kitchens, showers, and locker rooms

SIZES

2' x 3.2'
3.2' x 5.3'
3.2' x 8.3'
3.2' x 12.3'
3.2' x 16.1'
3.2' x 20.1'
4' x 5.92'
4' x 8.3'
4' x 12.3'
4' x 16.1'
4' x 20.1'

Sizes are approximate.

ANTI-FATIGUE/DRY OR WET ENVIRONMENTS/INDOOR



Cushion Station with holes

100%
customer satisfaction
GUARANTEED

NFSI
HIGH-TRACTION



MADE
IN THE
USA

www.andersenco.com

COMFORT FLOW™ & COMFORT SCRAPE™

Comfort Flow
Comfort Scrape

Product No. 420
Product No. 430



15% Post Consumer Recycled Rubber Content

- Grease and oil proof, chemical resistant
- Welding Safe and static dissipative
- Beveled edges for safe transition from mat to floor
- Lifetime anti-microbial treatment to prevent odors and degradation of the mat
- Comfort Flow has drainage holes to allow liquids to flow through. Comfort Scrape has non-draining surface
- Light weight and flexible for easy handling and cleaning
- Certified slip resistant by National Floor Safety Institute
- Recommended for kitchens and industrial applications

SIZES

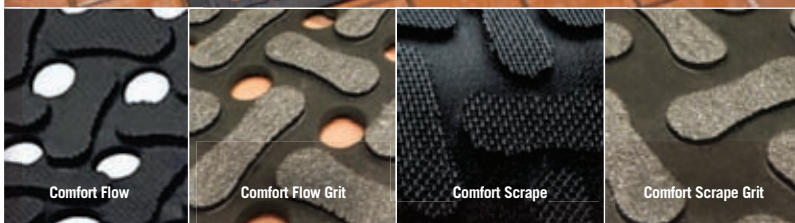
2' x 3'
3' x 5'
4' x 6'
3' x 9'

Sizes are approximate.

ANTI-FATIGUE/SLIP RESISTANT/DRY OR WET ENVIRONMENTS
INDOOR-OUTDOOR



Comfort Flow



Comfort Flow

Comfort Flow Grit

Comfort Scrape

Comfort Scrape Grit

with GRIT

Comfort Flow Grit
Comfort Scrape Grit

Product No. 4200
Product No. 4300

- Same features as above, but with an added aggressive silicon carbide anti-slip top surface

ANTI-FATIGUE/SLIP RESISTANT/DRY OR WET
ENVIRONMENTS/INDOOR-OUTDOOR



Comfort Flow HD Linkable Mats

COMFORT FLOW HD MODULAR TILE & LINKABLE MATS COMFORT SCRAPE HD MODULAR TILE & LINKABLE MATS

Comfort Flow HD Modular Tile - Product No. 4430
Comfort Flow HD Linkable Mats - Product No. 4434
Comfort Scrape HD Modular Tile - Product No. 4431
Comfort Scrape HD Linkable Mats - Product No. 4435



12.8% Post Consumer Recycled Rubber Content

- High Density Closed Cell Nitrile Rubber Cushion has 15% recycled content
- Same features as Comfort Flow/Comfort Scrape in a Modular Tile/Linkable Mat
- Comfort Flow HD Modular Tiles can be custom fit in any work station configuration

MODULAR TILE SIZES

Middle:
18" x 18" x 3/4"
36" x 36" x 3/4"
Side:
18" x 19.125" x 3/4"
36" x 37.375" x 3/4"
Corner:
19.125" x 19.125" x 3/4"
37.375" x 37.375" x 3/4"

LINKABLE SIZES

Mat End:
37.125 x 39"
Mat Middle:
36" x 39"

with GRIT

Comfort Flow HD Modular Tile w/Grit - Product No. 4432
Comfort Flow HD Linkable Mats w/Grit - Product No. 4436
Comfort Scrape HD Modular Tile w/Grit - Product No. 4433
Comfort Scrape HD Linkable Mats - Product No. 4437

- Same features as above, but with an added aggressive silicon carbide anti-slip top surface

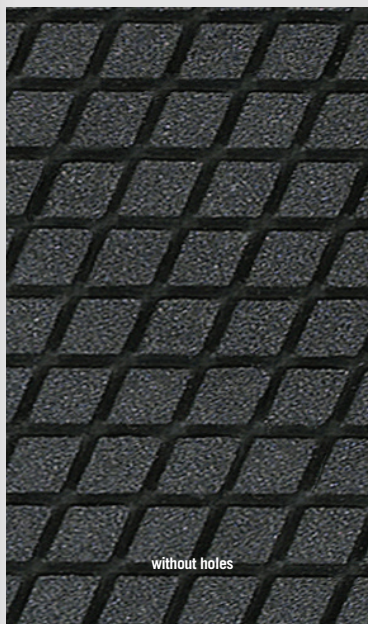


TRACTION HOG II™

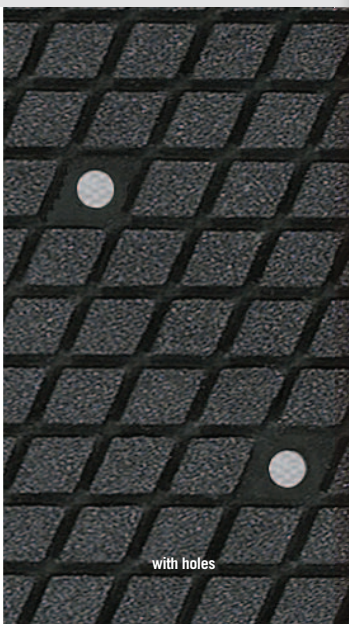
Without Holes
Drainable (with holes)

Product No. 4418
Product No. 4419

SLIP-RESISTANT/WET ENVIRONMENTS/INDOOR



without holes



with holes

15% Post Consumer Recycled Rubber Content

- High Density Closed Cell Nitrile Rubber Cushion
- Diamond Patterned Grit Top provides a slip resistant surface in wet and oily environments
- Grease and oil proof, chemical resistant
- Welding Safe
- Beveled edges for safe transition from mat to the floor
- Lifetime anti-microbial treatment to prevent odors and degradation of the mat
- Drainage holes allow liquids to flow off the mat
- Backing designed to reduce the movement of the mat even with cart traffic
- Flexible for easy handling
- Recommended for Kitchens, Coolers, Freezers and Industrial applications

SIZES

3' x 5'
3' x 9'

Sizes are approximate.



PRODUCT NAME	POST CONSUMER RECYCLED CONTENT	POST INDUSTRIAL RECYCLED CONTENT	TOTAL RECYCLED CONTENT	MAT TYPE
Super Scrape Eco PAGE 6	95.0%	0.0%	95.0%	Scraper
Safety Scrape/Super Scrape Signature/Super Scrape Sign	20.0%	0.0%	20.0%	Scraper
Super Scrape/Super Scrape Parquet	20.0%	0.0%	20.0%	Scraper
Super Scrape Impressions	18.5%	0.0%	18.5%	Scraper
Brush Hog / Brush Hog Plus	13.2%	0.0%	13.2%	Scraper
Eco Select PAGE 6	96.0%	0.0%	96.0%	Scraper/Wiper
Waterhog Eco Elite /Waterhog Eco Elite Fashion PAGE 8	38.6/43.3%	0.0%	38.6/43.3%	Scraper/Wiper
Waterhog Eco Elite Roll Goods PAGE 9	43.3%	0.0%	43.3%	Scraper/Wiper
Waterhog Eco Premier/ Waterhog Eco Premier Fashion	38.6/43.3%	0.0%	38.6/43.3%	Scraper/Wiper
Waterhog Eco Grand Elite/Eco Grand Premier	43.3%	0.0%	43.3%	Scraper/Wiper
Waterhog Eco Elite Roll Goods Logo	32.8%	0.0%	32.8%	Scraper/Wiper
Waterhog Eco Prem Tile 1/4" PAGE 9	19.8%	0.0%	19.8%	Scraper/Wiper
Waterhog Grand Classic	14.6%	4.1%	18.7%	Scraper/Wiper
Waterhog Fashion/Waterhog Fashion Diamond	14.6%	4.1%	18.7%	Scraper/Wiper
Waterhog Classic/Waterhog Classic Diamond	13.4%	3.5%	16.9%	Scraper/Wiper
Waterhog Sign/Waterhog Signature	13.4%	3.5%	16.9%	Scraper/Wiper
Waterhog Inlay Fashion	13.1%	3.7%	16.8%	Scraper/Wiper
Waterhog Inlay	12.2%	3.1%	15.3%	Scraper/Wiper
Waterhog Diamond Cord	11.7%	0.0%	11.7%	Scraper/Wiper
Waterhog Masterpiece	11.2%	0.0%	11.2%	Scraper/Wiper
Waterhog Eco Prem Tile 7/16" PAGE 9	11.1%	0.0%	11.1%	Scraper/Wiper
Waterhog Tile 1/4"	0.0%	3.6%	3.6%	Scraper/Wiper
Waterhog Tile 7/16"	0.0%	1.5%	1.5%	Scraper/Wiper
Enviro Plus PAGE 10	76.0%	13.0%	89.0%	Wiper
Trigrip	20.7%	0.0%	20.7%	Wiper
Clean Stride Frames	17.7%	0.0%	17.7%	Wiper
Colorstar Plush	10.9%	0.0%	10.9%	Wiper
Colorstar Crunch	5.9%	0.0%	5.9%	Wiper
Colorstar	5.7%	0.0%	5.7%	Wiper
Classic Impressions	15.3%	0.0%	15.3 %	Wiper/Logo
Classic Impressions HD	14.8%	0.0%	14.8 %	Wiper/Logo
Colorstar Computuft	8.5%	0.0%	8.5%	Wiper/Logo
Hog Heaven Confetti 5/8" PAGE 13	54.5%	0.0%	54.5%	AntiFatigue
Hog Heaven Confetti 7/8" PAGE 13	51.9%	0.0%	51.9%	AntiFatigue
Airflex All Rubber	20.0%	0.0%	20.0%	AntiFatigue
Airflex Carpet	17.5%	4.2%	21.7%	AntiFatigue
Hog Heaven Fashion 5/8"	17.5%	0.0%	17.5%	AntiFatigue
Hog Heaven Plush 5/8"	17.3%	0.0%	17.3%	AntiFatigue
Hog Heaven 5/8 PAGE 12 /Hog Heaven Sign	16.5%	0.0%	16.5%	AntiFatigue
Hog Heaven Fashion 7/8"	16.2%	0.0%	16.2%	AntiFatigue
Hog Heaven Plush 7/8"	16.0%	0.0%	16.0%	AntiFatigue
Hog Heaven II Modular Tile Fashion	15.6%	0.0%	15.6%	AntiFatigue
Hog Heaven 7/8" PAGE 12	14.8%	0.0%	14.8%	AntiFatigue
Kneeling Comfort Foam/Rubber	14.5%	0.0%	14.5%	AntiFatigue
Cushion Station PAGE 13	14.4%	0.0%	14.4%	AntiFatigue
Complete Comfort II PAGE 11	14.0%	0.0%	14.0%	AntiFatigue
Hog Heaven II Modular Tile Traffic	14.0%	0.0%	14.0%	AntiFatigue
Cushion Station HD Modular Tile	12.8%	0.0%	12.8%	AntiFatigue
Hog Heaven II Modular Tile Comfort/Grit PAGE 12	11.8%	0.0%	11.8%	AntiFatigue
Happy Feet/Linkable PAGE 11	9.8%	0.0%	9.8%	AntiFatigue
Hog Heaven II Modular Tile Marble	9.1%	0.0%	9.1%	AntiFatigue
Hog Heaven Marble 5/8"	6.1%	0.0%	6.1%	AntiFatigue
Hog Heaven Marble 7/8"	5.9%	0.0%	5.9%	AntiFatigue
Comfort Scrape/Grit PAGE 14	15.0%	0.0%	15.0%	AntiFatigue/Slip Resistant
Comfort Flow/Scrape/Grit PAGE 14	15.0%	0.0%	15.0%	AntiFatigue/Slip Resistant
Comfort Flow HD Modular Tile/Scrape/Grit PAGE 14	12.8%	0.0%	15.0%	AntiFatigue/Slip Resistant
Traction Tread	20.0%	0.0%	20.0%	Slip Resistant
Traction Hog II PAGE 15	15.0%	0.0%	15.0%	Slip Resistant



THE ANDERSEN ENVIRONMENTAL POLICY

The Andersen Company Inc. believes that businesses are responsible for achieving good environmental practices and operating in a sustainable manner.

We are therefore committed to reducing our environmental impact and continually improving our environmental performance as an integral and fundamental part of our business strategy and operating methods.

Our Policy is to:

- Wholly support and comply with or exceed the requirements of current environmental legislation
- Minimize our waste and then reuse or recycle as much of it as possible
- Minimize energy and water usage in our buildings and processes in order to conserve supplies, and minimize our consumption of natural resources, especially where they are non-renewable
- Apply the principles of continuous improvement in respect of air, water, noise and light pollution from our premises and reduce any impacts from our operations on the environment and local community
- As much as possible, purchase products and services that do the least damage to the environment and encourage others to do the same
- Assess the environmental impact of any new processes or products we intend to introduce in advance
- Ensure that all employees understand our Environmental Policy and conform to the high standards it requires
- Address complaints about any breach of our Environmental Policy promptly and to the satisfaction of all concerned
- Update our Environmental Policy annually in consultation with staff, associates and customers

LAST YEAR WE RECYCLED...

- **90% of our waste stream**
- **1,686,030 lbs of recycled rubber** into our products, keeping over 57,000 car tires out of our landfills
- **Over 18 million (949,028 lbs) 20 oz recycled drink bottles (PET Polyester)** in the manufacturing of our Waterhog Eco products. If you placed these bottles end to end they would reach from Atlanta to San Francisco.
- **Over 32,000 mats (220,847 lbs).** If placed in one stack of 3' x 5' mats, the stack would be taller than an 80 story building.



We have over 50 products with recycled content.

Three of our products have over 85% total recycled content:

- **Superscrape Eco**
- **Eco Select**
- **Enviro Plus**



MAT RECYCLING PROGRAM



The Andersen Company is pleased to offer our customers the capabilities of recycling all obsolete or worn out rubber backed mats. We certify that none of the mats returned are placed in a landfill. The obsolete or worn out mats will be ground up to be used either in manufacturing other mats or used for boiler fuel.

For more information, call us at 1-800-241-4696 or e-mail info@andersenco.com





ONE SOURCE FOR MATS



www.andersenco.com
www.mobileapp.andersenco.com

THE ANDERSEN COMPANY • 340 CROSS PLAINS BLVD • DALTON, GA 30721
TOLL FREE 800.241.4696 • 706.277.2551 • FAX 706.277.3170

Follow us on  facebook and  twitter